



ARKAD
DESIGN GUNILLA
LAGERHEM
ULLBERG

KASTHALL



PRODUCT SPECIFICATIONS FOR ARKAD

This classic wool rug and exclusive wall-to-wall carpet is made according to old Swedish weaving traditions. This gives you the freedom to combine patterns, colors and accents just the way you want. For example, you can choose between ten different patterns and between mixed and single-color yarns, and combine them to suit your individual taste. Choose from a total of 43 mixed and 132 unicolored yarns to create your Arkad rug. You can find all color samples and color numbers at kasthall.com.

PRODUCT TYPE: Woven rug in pure wool

WEFT MATERIAL: 100% wool

WARP MATERIAL: 100% linen

TOTAL THICKNESS: approx. 7 mm

TOTAL WEIGHT: approx. 2310 g/m²

SIZE: **Checkerboard 920 and Brick 939:** Not available in sizes under 200 cm.

Other patterns: Custom made sizes, width 70–600 cm upon request.

Or choose amongst our suggested sizes; 85x240 cm, 135x200 cm, 160x240 cm, 195x300 cm, 240x350 cm, 290x400 cm and 340x450 cm. Also suitable as an exclusive wall-to-wall carpet.



Wear classification:
(EN 1307) Class 32
Commercial General



Luxury rating:
(EN 1307) LCI



Acoustics properties:
Sound insulation approx. 24 dB



Acoustics properties:
Sound absorption α_w 0,15



Fire classification:
(EN 13501-1) Cf-s1



CE (EN 14041)

COLORS:

Choose from a total of 43 mixed and 132 unicolored yarns to create your Arkad rug. You can find all color samples and color numbers at:

<https://kasthall.com/en/collections/arkad>

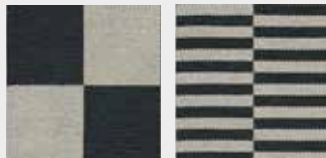
ENVIRONMENT AND SUSTAINABILITY

- Meets the requirements for Green Label Plus
- Building assessment program: Swedish Byggarubedömning ID: 111071, Recommended

THE FOLLOWING PATTERNS CAN BE COMBINED WITH EACH OTHER:

All patterns can be combined from 200 cm and more.

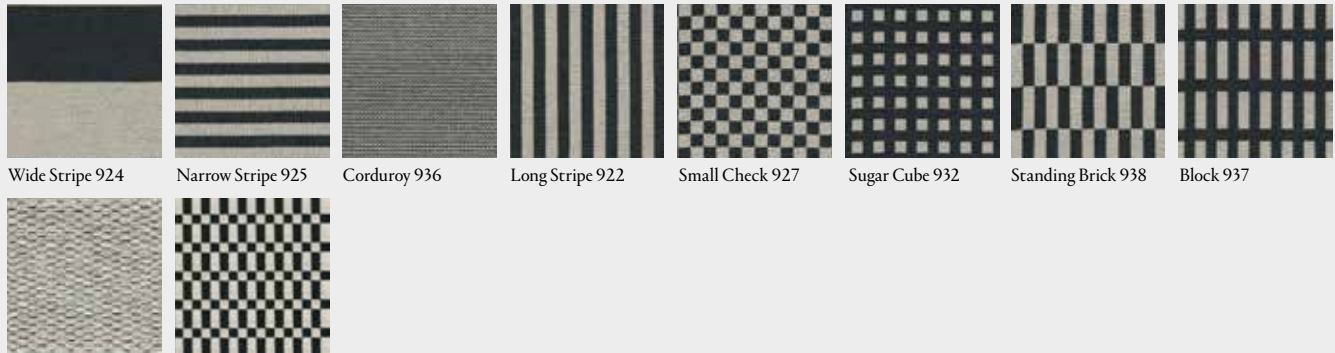
Group 1



Checkerboard 920

Brick 939

Group 2



Wide Stripe 924

Narrow Stripe 925

Corduroy 936

Long Stripe 922

Small Check 927

Sugar Cube 932

Standing Brick 938

Block 937

Uni

Cubrick 935

PATTERN REPEAT SIZE:

Pattern	Width	Squares/Rectangles/Stripes
Checkerboard 920	approx. 200 cm approx. 280-600 cm	approx. 40x42 cm approx. 40x44 cm
Brick 939	approx. 200-600 cm	approx. 4,5x40 cm
Wide Stripe 924	approx. 70-170 cm approx. 175-600 cm	approx. 30 cm approx. 40 cm
Narrow Stripe 925	approx. 70-600 cm	approx. 4,5 cm long
Corduroy 936	approx. 70-600 cm	approx. 1 cm long
Long Stripe 922	approx. 70-600 cm	approx. 4,5 cm wide
Small Check 927	approx. 70-600 cm	approx. 4,5x4,5 cm
Sugar Cube 932	approx. 70-600 cm	approx. 4,5x4,5 cm (report 9x9 cm, 4,5 cm on both sides)
Standing Brick 938	approx. 70-600 cm	approx. 4,5x15 cm
Block 937	approx. 70-600 cm	approx. 4,5x15 cm (report 9x20 cm + 5 cm ending)
Cubrick 935	approx. 70-600 cm	approx. 4,5x9/4,5 cm (report 9x13,5 cm)

RUG DESIGNER:

You can do your very own rug at our easy accessible and web based design tool Rug Designer that guides you through the process and makes sure that any design you come up with can be made on the weaving looms in our factory in Sweden.

For more info visit: <https://kasthall.com/en/rugdesigner>





CARE ADVICE WOVEN RUGS

To further extend the lifetime of your rug, Kasthall recommends a regular maintenance so that the rug may retain its shape and appearance. If you have a light, single-colour rug you will need to care for it more often than a darker, patterned rug. It is also a good idea to use a rug underlay to prolong the life of your woven rug and prevent it from slipping on any type of floor. Thorough vacuuming is the best, most economical and environmentally friendly method of cleaning. Beating or shaking a rug may damage the fibers. It is most efficient to vacuum the rug one direction at a time.

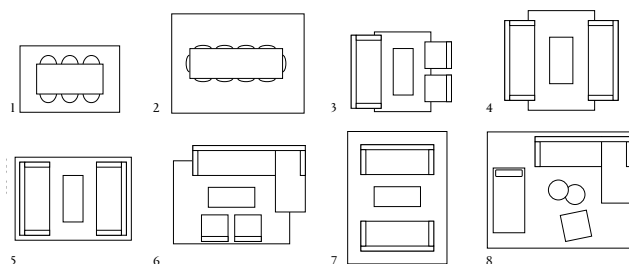
CLEANING ADVICE

We recommend that the rug is cleaned by a professional cleaner, using the extraction method on a flat surface. The quantity and temperature of the water will depend on the material. Good ventilation during the drying process is essential. Shrinkage will be about 3-5%. Kasthall's rugs are not to be machine-washed or dry-cleaned.

At www.kasthall.com you can read more about our materials, how to look after your rug and our stain guide.

CHOOSING A RUG

Choose the characteristics of the rug, its colour and design to suit the space in which it will be laid. If it is to be laid in a hall, for example, you may choose a type of rug that is more resistant to wear, and a colour that is a little darker and dirt-tolerant. Use a rug as a means of bringing together the rest of the interior. Decide whether you want to place a sofa on the rug or at its edge. If a rug is to be placed underneath a dining table, add at least 60 cm all round the table to allow space for pulling out the chairs. Woven rugs are suitable for most settings, both public and private. Ideal for use in domestic settings such as dining rooms, halls and kitchens, and in retail environments, conference premises and corridors. May also be laid as a carpet.



Examples of commonly used rug sizes:

- | | |
|---|--|
| 1. Dining table with 6 chairs: rug size 200x300 cm | 5. Three-seat double couch: rug size 250x350 cm |
| 2. Dining table with 10 chairs: rug size 300x400 cm | 6. Corner sofa with armchairs: rug size 250x350 cm |
| 3. Three-seat couch with armchairs: rug size 170x240 cm | 7. Three-seat double couch: rug size 300x400 cm |
| 4. Three-seat double couch: rug size 200x300 cm | 8. Corner sofa with daybed and armchair: rug size 350x450 cm |

ENVIRONMENT AND SOCIAL RESPONSIBILITY

At Kasthall environmental work is a very natural part of what we do and what we stand for – today and for generations to come. Naturally we are certified according to the environmental standard ISO 14001, and many of our products are compliant with known environmental standards. These certificates confirm our continuous efforts. All our rugs are made to order in Sweden, using the finest renewable natural materials. Our working environment reflects the creativity and quality that we strive for – in design, materials and manufacture. Read more about our environmental work and philosophy at kasthall.com.

OTHER INFORMATION

- Depending on the materials used and the rug-making process, dimensions may vary by up to 5% so please state maximum or minimum dimensions when placing your order.
- Note that all rugs from Kasthall are made from natural materials. Variations in colour and texture can therefore arise between batches of yarn and dye baths.
- Rugs should be laid on an underlay that prevents them from moving on all types of flooring. This extends the life of the rug and reduce the risk of slipping.
- The use of backing fixes the dimensions of a rug and extends its life. This is recommended for rugs that are wider than 200 cm and/or those larger than six sqm.

Showrooms in MILAN | NEW YORK | STOCKHOLM | GOTHENBURG

KASTHALL HQ SWEDEN

Phone +46 320 20 59 00, Fax +46 320 20 59 01
Fritslavägen 42, Box 254, SE-511 23 Kinna, Sweden
info@kasthall.se

For the latest updates of our collection, please visit www.kasthall.com

All the designs shown here are protected under law. Kasthall have the property rights and distribution rights worldwide. Copying will be prosecuted.



ARKAD Design GUNILLA LAGERHEM ULLBERG
Woven rug in pure wool



Arkad Standing Brick 938



Arkad Checkerboard 920



Showrooms in MILAN | NEW YORK | STOCKHOLM | GOTHENBURG

KASTHALL HQ SWEDEN
Phone +46 320 20 59 00, Fax +46 320 20 59 01
Fritslavägen 42, Box 254, SE-511 23 Kinna, Sweden
info@kasthall.se

For the latest updates of our collection, please visit www.kasthall.com
All the designs shown here are protected under law. Kasthall have the property rights and distribution rights worldwide. Copying will be prosecuted.

