



MOSS
DESIGN GUNILLA
LAGERHEM ULLBERG



KASTHALL



PRODUCT SPECIFICATIONS FOR MOSS

The hand tufted rug Moss is, with its mix of long, slightly rough linen threads and shorter threads of soft wool, a unique visual and tactile treat. Gunilla Lagerhem Ullberg created Moss from her interest in color, paired with a great knowledge of materials, textile history and trend. Before long this contemporary interpretation of the traditional Swedish ryra rug brought the long-piled rug back into fashion. Moss is, and will continue to be, a favourite for the private home. Moss comes in ten sophisticated color combinations.

PRODUCT TYPE: Hand tufted rug in pure wool and linen

PILE MATERIAL: 70% wool, 30% linen

BASE FABRIC: Polyester

BACKING MATERIAL: Polypropylene and recycled yarn

ADHESIVE: Aqueous acrylic adhesive

SIZE: Any size and shape available. Or choose amongst our suggested sizes: 140x200 cm, 170x240 cm, 200x300 cm, 250x350 cm, 300x400 cm, 350x450 cm. Round: Ø 240 cm.

PILE HEIGHT: approx. 40 mm

PILE WEIGHT: approx. 3500 g/m²

TOTAL HEIGHT: approx. 44 mm

TOTAL WEIGHT: approx. 4400 g/m²



Acoustics properties:
Sound insulation approx. 41 dB
(EN 1307)



Acoustics properties:
Sound absorption α_w 0,4, class D



Luxury rating:
(EN 1307) LC 5



Fire classification:
(EN 13501-1) Fl



ENVIRONMENT AND SOCIAL RESPONSIBILITY

At Kasthall environmental work is a very natural part of what we do and what we stand for – today and for generations to come. Naturally we are certified according to the environmental standard ISO 14001, and many of our products are compliant with known environmental standards. These certificates confirm our continuous efforts. All our rugs are made to order in Sweden, using the finest renewable natural materials. Our working environment reflects the creativity and quality that we strive for – in design, materials and manufacture. Read more about our environmental work and philosophy at kasthall.com.

CARE ADVICE HAND TUFTED RUGS

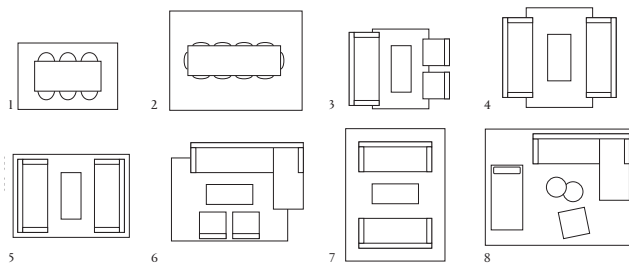
To further extend the lifetime of your rug, Kasthall recommends a regular maintenance so that the rug may retain its shape and appearance. If you have a light, single-colour rug you will need to care for it more often than a darker, patterned rug. Thorough vacuum cleaning is the best, most economical and environmentally friendly cleaning method. Beating or shaking a rug may damage the fibers. Note that it is quite normal for the rug to lose individual fibers when used, these are excess fibres and it does not affect the general quality of the rug. If you want to get rid of excess fibres faster, you can vacuum the rug daily for an initial period. It is most efficient to vacuum the rug one direction at a time. Remember that hand tufted rugs in linen are sensitive to water, so take particular care with the amount of water you use when removing stains.

CLEANING ADVICE

We recommend that the rug is cleaned by a professional cleaner, using the extraction method on a flat surface. The quantity and temperature of the water will depend on the material and pile length. Good ventilation during the drying process is essential. Shrinkage will be about 3-5%. Kasthall's rugs are not to be machine-washed or dry-cleaned. At www.kasthall.com you can read more about our materials, how to look after your rug and our stain guide.

CHOOSING A RUG

Choose the characteristics of the rug, its colour and design to suit the space in which it will be laid. If it is to be laid in a hall, for example, you may choose a type of rug that is more resistant to wear, and a colour that is a little darker and dirt-tolerant. Use a rug as a means of bringing together the rest of the interior. Decide whether you want to place a sofa on the rug or at its edge. If a rug is to be placed underneath a dining table, add at least 60 cm all round the table to allow space for pulling out the chairs. Hand tufted rugs are suitable for creating cosy environments with warm acoustics. Depending on the quality, hand tufted rugs can work equally well in domestic settings and public spaces. Ideal for use in living rooms, bedrooms and in lounge environments and hotel rooms.



Examples of commonly used rug sizes:

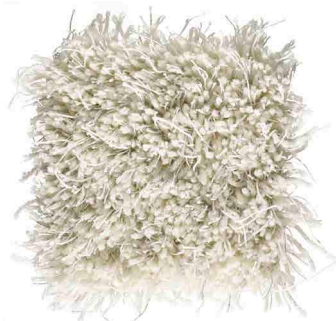
1. Dining table with 6 chairs: rug size 200x300 cm
2. Dining table with 10 chairs: rug size 300x400 cm
3. Three-seat couch with armchairs: rug size 170x240 cm
4. Three-seat double couch: rug size 200x300 cm
5. Three-seat double couch: rug size 250x350 cm
6. Corner sofa with armchairs: rug size 250x350 cm
7. Three-seat double couch: rug size 300x400 cm
8. Corner sofa with daybed and armchair: rug size 350x450 cm

OTHER INFORMATION

- Depending on the materials used and the rug-making process, dimensions may vary by up to 2% so please state maximum or minimum dimensions when placing your order.
- Note that all rugs from Kasthall are made from natural materials. Variations in colour and texture can therefore arise between batches of yarn and dye baths.

MOSS

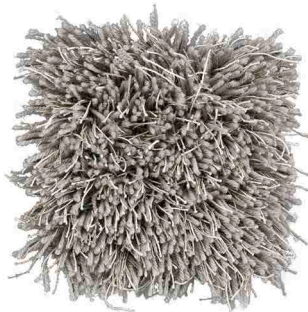
Design GUNILLA LAGERHEM ULLBERG
Hand tufted rug in pure wool and linen



White 1



Beige 2



Silver Grey 500



Beige-Grey 800



Green 11



Brilliant Blue 250



Dark Turquoise 201



Blue Iron 501



Deep Coral 100



Nickel Grey 502

KASTHALL HQ SWEDEN

Phone +46 320 20 59 00, Fax +46 320 20 59 01
Fritslavägen 42, Box 254, SE-511 23 Kinna, Sweden
info@kasthall.se

For the latest updates of our collection, please visit www.kasthall.com

All the designs shown here are protected under law. Kasthall have the property rights and distribution rights worldwide. Copying will be prosecuted.

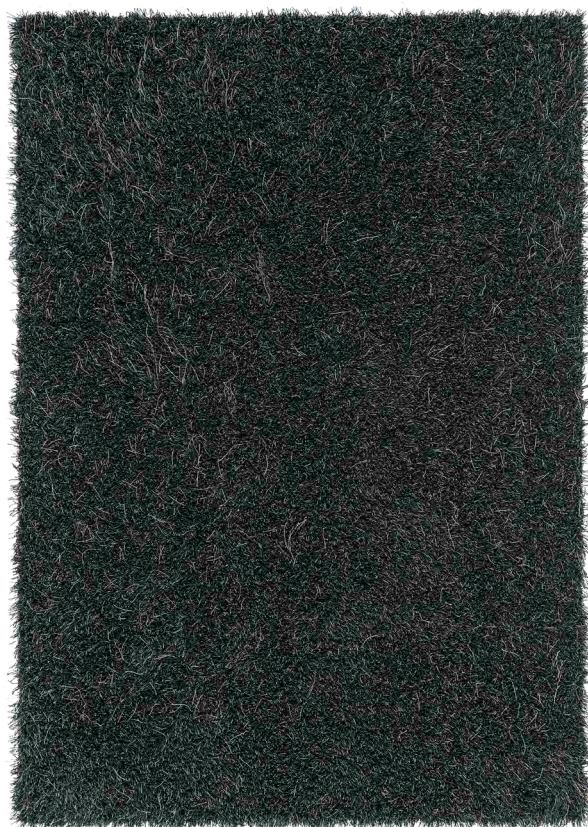


MOSS

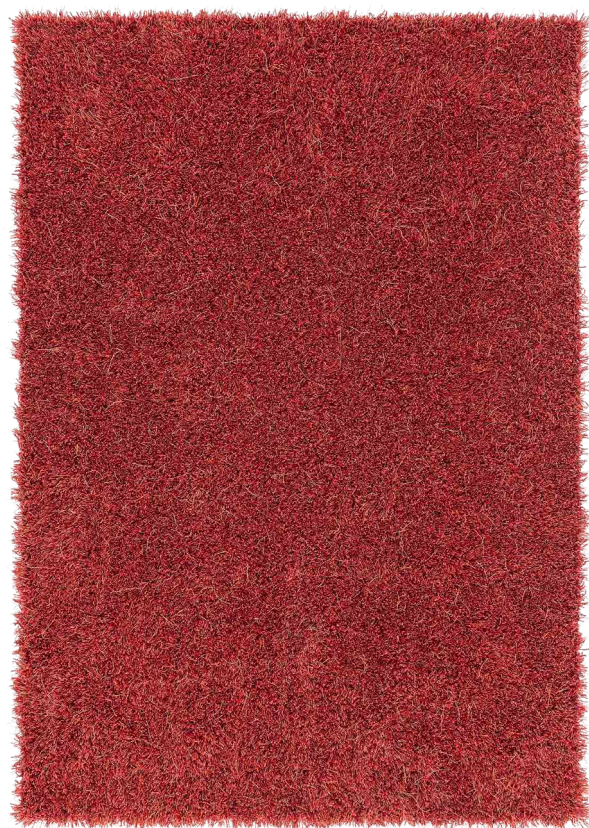
Design GUNILLA LAGERHEM ULLBERG
Hand tufted rug in pure wool and linen



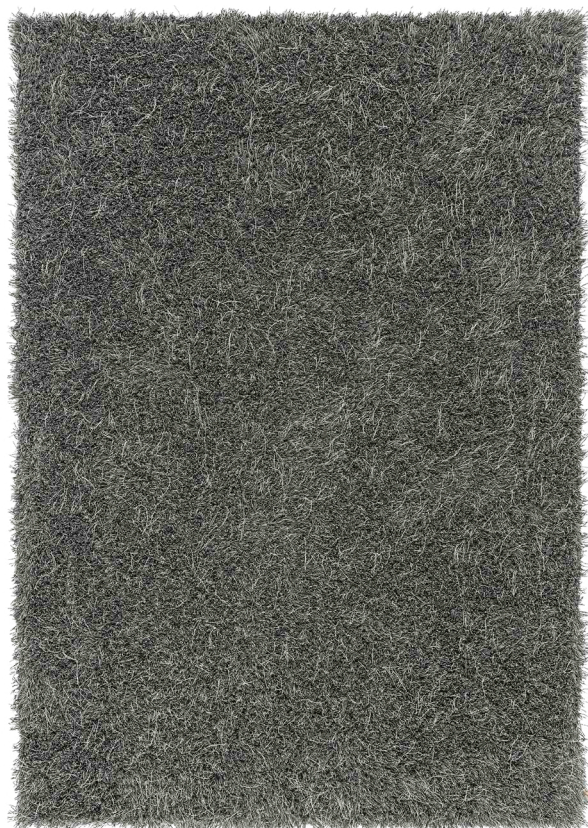
Rug 170x240 cm, Dark Turquoise 201



Rug 170x240 cm, Blue Iron 501



Rug 170x240 cm, Deep Coral 100



Rug 170x240 cm, Nickel Grey 502

KASTHALL HQ SWEDEN

Phone +46 320 20 59 00, Fax +46 320 20 59 01
Fritslavägen 42, Box 254, SE-511 23 Kinna, Sweden, info@kasthall.se

For the latest updates of our collection, please visit www.kasthall.com

All the designs shown here are protected under law. Kasthall have the property rights and distribution rights worldwide. Copying will be prosecuted.

