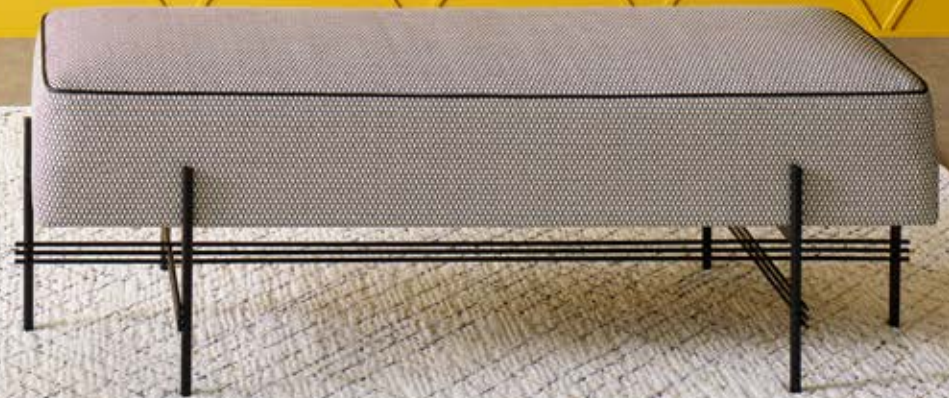


COLLECTION 2018

# KASTHALL



MADE IN SWEDEN.  
DESIGNED FOR THE WORLD.

# LEGACY OF TOMORROW

*– a conversation between past and future*

In an intense and creative dialogue between our textile heritage and our vision of the future we are proud to present the 2018 Kasthall collection. This year we have challenged ourselves in the design process as well as in the development of new yarn qualities and techniques for weaving and tufting. We've also brought unique handicraft like embroidery and sketching into the process. Our love of textile history and natural materials led the way.

But curiosity of the craft and a narrative of touch, scent and sound played an important part in the development of this collection. At Kasthall our aim is always to create beautiful rugs and textile flooring in high quality materials and a rich variety of sophisticated colors. With the Kasthall 2018 collection we invite you to experience the legacy of tomorrow by means of an artful simplicity.

# CONTENT

ABOUT KASTHALL 4-9

OUR WOVEN RUGS 8-9

OUR TUFTED RUGS 10-11

RUG DESIGNER 12-13

WOVEN COLLECTION 14-80

HAND TUFTED COLLECTION 81-143

OUR ARCHIVE 144-147

WALL-TO-WALL CARPETS 148-150

GOOD TO KNOW 151



# MADE IN SWEDEN. DESIGNED FOR THE WORLD.

*Swedish design company Kasthall is offering premium design solutions for textile flooring, for commercial areas and residential. Since 1889 Kasthall has designed and produced exclusive rugs in its own factory in Sweden. With innovation and craftsmanship always using the best material, Kasthall has become one of the leading brands with a strong worldwide presence. Together with our first class service, expertise and ability to tailor made after customers wishes, Kasthall is today many customers first choice in premium textile flooring solutions.*







# TO MAKE AN INDIVIDUAL RUG WE WORK AS A TEAM

*At Kasthall all our rugs are special: made by hand with great care and attention to detail. In addition to our vast collection, Kasthall Design Studio offers the possibility to create a completely bespoke rug or carpet – whether it’s a complex textile tapestry, an unconventional shape, a unique pattern, or simply a perfectly matched color.*

How are the forms and colors of a rug developed? Our in-house designers work full time to experiment with and refine our designs, but we also invite some of the most talented architects and designers from the international arena to work with us.

And yet, the answer isn't really that simple. Each rug is a creative process that combines different impressions into one idea. Our designers keep their ears tuned to the desires of the customer, their eyes on what's happening in art, fashion

and architecture, and their fingers deep in the factory's extensive archives of yarns, patterns, sketches and rug samples.

Even that doesn't answer the question. Our designers always work closely with our other employees. The workshop in Kinna is personal and intimate, and everyone knows everyone else by name. This creates a dynamism that can only be attained by people striving towards a common goal. One person might develop a new material, while another discovers a

new surface structure, and a third designs a machine that creates entirely new manufacturing possibilities.

We are united by a passion for our task: to create a rug that is unique, durable and irreplaceable. At our workshop we bring together expertise and innovation. We believe this is the key to our modern expression. We love what we do, we do it well, and we never want to stop striving forward.



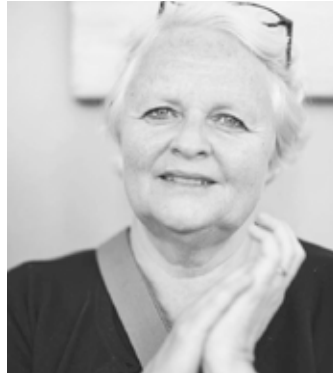
# KASTHALL DESIGN STUDIO



## **LENA JISEBORN, DESIGN DIRECTOR**

Lena Jiseborn is educated at The Swedish School of Textile University of Borås. She has a long experience as a designer within the car industry, both at SAAB and later on at Volvo where she was the Design Director for Color&Material.

Lena's passion for textile, together with Kasthall's unique quality of the products, led to the position as Design Director for Kasthall.



## **GUNILLA LAGERHEM ULLBERG, FORMER CHIEF DESIGNER**

Gunilla Lagerhem Ullberg's inquisitiveness and need to experiment, combined with her sense of colour, material and technique are some of the reasons why she became so respected and won multiple awards through the years. The diploma for Excellent Swedish Design in 1991, Excellent Swedish Design 1997, Designer of the Year by Elle Decoration in 2012, among others.

Her designs for Kasthall can be seen at such places as the Royal Palace in Stockholm, Embassies, Government buildings and in several private homes around the world. Gunilla worked as chief designer at Kasthall for 28 years and has played a significant role in Kasthall's success story.



## **MAJA JOHANSSON STARANDER, DESIGNER**

Maja Johansson Starander is educated at Central Saint Martins and the Royal College of Art in London. When finishing her Master Maja got in contact with Gunilla whom she felt a strong connection with as a designer. After meeting with Gunilla in Stockholm she decided to leave London for the little town of Kinna.

She has worked as an in-house designer at Kasthall since early 2013 with an aim to move Kasthall forward along with the beautiful heritage.



## **ELLINOR ELIASSON, DESIGNER**

Ellinor Eliasson graduated from The Swedish School of Textiles in 2014 where she studied textile design. She applied for an internship at Kasthall Design Studio in 2015 after finishing a trainee position in Amsterdam. Since 2017 Ellinor is a permanent member of the Kasthall Design Studio and has been part of many successful projects.

Ellinor Eliasson thrives in projects where she can combine her interests for innovation, sustainability and colour design, interests that square well with Kasthall's sustainability project, Harvest, where Ellinor is the main initiator and designer.

# KASTHALL DESIGN FRIENDS



## PETER ERIKSSON, SENIOR PRODUCT MANAGER

Peter started his career in 1991 at Kasthall as a hand tufter. He has been involved in most of Kasthall's departments, both within production development and leadership, hence Peter knows the products very well.

As a product developer he has worked closely with Gunilla Lagerhem Ullberg which resulted in many special projects. Peter Eriksson has participated in the development of our rugs Moss, Fogg and Monroe, amongst others. Today Peter works as a Senior Product Manager in Kasthall Design Studio.



## BJÖRN DAHLSTRÖM

Björn has worked with many internationally renowned clients, but at the same time, he has found much pleasure to participate in various exhibition projects. The Positive and Negative Rug is the contemplative and ingenious result of a collaboration where the pattern of each design is a beautiful hand-written statement expressing the feelings of the rug. It is not surprising that Positive and Negative rug have received much attention around the world.



## JONAS BOHLIN

Jonas Bohlin is an interior designer and architect from Stockholm, Sweden. He was educated at Konstfack University College of Arts, Crafts and has worked with glassware, textiles, art objects, installations, furniture and lighting design since 1983. He is known for his master thesis, the armchair Concrete, made of steel and concrete. For Kasthall, he has designed a number of rugs (Värtecken, Trädgård vid Havet & Sekel), with inspiration from the Nordic nature, with its climate and distinctive seasons.

## CLAESSON KOIVISTO RUNE

The Swedish trio founded their multi-disciplinary office of architecture and design in 1995 and have since then gone on to reap huge success around the world winning numerous awards for their projects. To Kasthall they are very dear and we have collaborated on many projects, where we have developed customized rugs and carpets together. Ola Rune is also an external Design Advisor to Kasthall.

Check out the wall-to-wall carpet Pinstripe, originally designed for the prestigious Operakällaren restaurant, and the sophisticated hand tufted rug Pinstripe XL. Tiles is a collection of hand tufted rugs in pure wool designed by Claesson Koivisto Rune. The inspiration comes from the different shapes and dimensions of ceramic tiles. Combined in a perfectly balanced pattern, elegantly framed by a thin outer line, Tiles really is Scandinavian simplicity at its best.



## PAOLA NAVONE

Paola is an advocate of unique artefacts and a champion of craftsmanship. The breadth of her design portfolio is as impressive as her drive to push the boundaries of her profession. Paola Navone is an inimitable designer whose range includes furniture, jewellery, clothing and ceramics. She has surprised with almost every role in the design spectrum. For Kasthall she designed the rug Doodle.



## JEAN MARIE MASSAUD

is an architect, inventor and designer. Denying trend and fashion, Jean Marie prefers questioning the existing, working out on progress and eventually proposing answers to contemporary stakes. It is this symbiosis between Man, his creations and his natural environment, that Jean Marie Massaud strives to reach. The collaboration between Jean Marie Massaud and Kasthall is the hand tufted rug Karl.





# WOVEN RUGS

*Weaving is a craft that has occupied humans for thousands of years. The concept is simple: two perpendicular rows of threads, the warp and the weft, are interlaced. This may be the most beautiful aspect of weaving. Simplicity is the key, and the results are timeless and durable.*

While the basic concept is simple, we have refined the technique. Step by step, over many decades, we have refined the art to create more exciting, advanced and unique rugs.

Our woven rugs are mainly made of yarn that we make ourselves from the finest natural materials: wool, linen, or a combination of the two. The advantage of these materials is that they are hardwearing and retain their beauty for a long time. They also have a special feel and a natural sheen. We select exclusive yarns from leading suppliers. Our close collaboration with our yarn suppliers and our dye works enables us to develop special shades or achieve a particular texture or an individual style. We also

make sure that the yarn is dyed and treated in a way that gives it a special character and minimises the environmental impact.

Kasthall has a large collection of woven rugs. Our collections can be described as the branches of a large family tree, originating from the same yarn but each with its own unique personality and design. From these collections you can select the size and colors that suit you. In some cases you can choose your own combination of pattern and color to create a more individual rug. This means that you can design a rug that is unique and tailored to your needs. Try our Rug Designer programme on our website. For larger projects we offer even greater freedom of

choice and can produce special color and pattern combinations to suit the chosen setting.

All woven rugs are available in any size, although we may need to adjust the dimensions to accommodate the pattern. You can choose from our standard widths or order special widths from 70 cm up to 600 cm. The length is entirely up to you. And since we can weave rugs up to six metres wide, this means that they also can be used as exclusive wall-to-wall carpets. All rugs are made to order.

OWN  
THE  
FLOOR





# HAND TUFTED RUGS

*Tufting provides a multitude of possibilities in terms of patterns and forms. We can create any motif or shape that is desired or imagined. Our tufters, like our weavers, must possess a high level of craftsmanship at every stage of creating a hand tufted rug.*

Once the rug is tufted, we make sure it meets the high level of quality we demand. Short piles are sheared so that the pile is even and beautiful. On rugs with longer pile, tufts that are too long are trimmed by hand. This way we find the individual character in each rug.

At Kasthall we've been tufting rugs since 1972. The basis of the tufting method is a cloth backing stretched over a frame. Then a tufting gun is used

to push the yarn through the backing to fill in the pattern or shape with different colored yarn. These threads that are pushed through the backing create the pile of the rug.

That's why a hand tufted rug is unique. The production method provides excellent scope for creating detailed patterns, individual styles and visual effects. A hand tufted rug also has the ability to absorb noise effectively and create a pleasant sound environment.

You may even want to cover an entire room wall-to-wall with a hand tufted rug for a fantastic sensation.

Kasthall has a large collection of hand tufted rugs that are made from high-quality materials and designed with great style. These include pieces with different pile heights and densities, ranging from long-pile rugs to bouclé rugs.



# KASTHALL RUG DESIGNER

*Kasthall Rug Designer® is a web based application where you can design your own unique woven Arkad or Häggå rug using different patterns in 160 colors. Everything that can be designed in Rug Designer can be done in our production – so you never have to worry about that while designing.*

*Choose from all patterns and colors in the Arkad and Häggå collections and any size you desire. Your rug will be one of a kind, specially made by you. If you are not very familiar with the Arkad and Häggå collections; have a look at our website and learn more about them and get inspired of what can be done!*

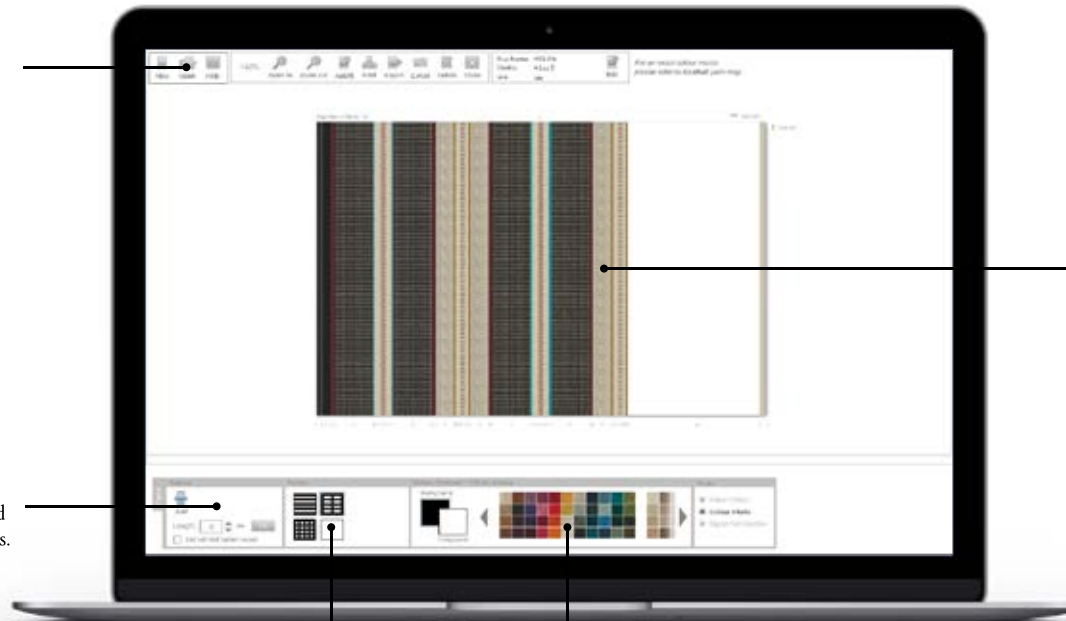


# LAUNCH OF NEW RUG DESIGNER

*In Spring 2018 we are launching a new web application of Rug Designer. This time Kasthall are adding the tufted rug Mark into the tool where you can choose from 116 colors.*

## KASTHALL RUG DESIGNER®

From the toolbar you can create a new rug, open an existing or change the name and size of your rug. You can also create a rug specification or send your rug as a link via e-mail.



On the main rug area you can see the result of your creation; the number and size of the pattern fields and the total rug size.

Every rug consists of a number of pattern fields. Once you have created your rug you need to fill it with fields.

This is where you select background and foreground colors. There are 44 mixed, and 116 uni colored yarns to choose from.

Depending on the quality you choose, you will be given a set of patterns to work with. For each field you can choose one pattern. This means that different fields can have different patterns.

WEAVING IS  
TWO PERPENDICULAR  
ROWS OF THREADS,  
THE WARP AND THE  
WEFT ARE INTERLACED.  
SIMPLICITY IS  
THE KEY AND THE  
RESULT IS TIMELESS  
AND DURABLE.

# WOVEN RUGS

## A-Z



# ARKAD™

GUNILLA LAGERHEM ULLBERG





*This classic wool rug and exclusive wall-to-wall carpet is made according to old Swedish weaving traditions. This gives you the freedom to combine patterns, colors and accents just the way you want. For example, you can choose between ten different patterns and between mixed and single-color yarns, and combine them to suit your individual taste.*

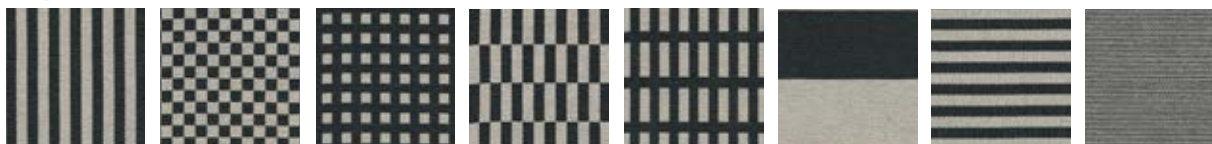
THE FOLLOWING PATTERNS CAN BE COMBINED WITH EACH OTHER:

Group 1:



Checkerboard 920    Wide Stripe 924    Brick 939    Narrow Stripe 925    Corduroy 936    Uni 988

Group 2:



Long Stripe 922    Small Check 927    Sugar Cube 932    Standing Brick 938    Block 937    Wide Stripe 924    Narrow Stripe 925    Corduroy 936

SUGGESTED SIZES:

Checkerboard 920	-	-	-	200x300 cm	280x400 cm
Long Stripe 922	85x240 cm	135x200 cm	165x240 cm	200x300 cm	245x350 cm
Wide Stripe 924	85x245 cm	135x245 cm	165x250 cm	200x300 cm	245x400 cm
Narrow Stripe 925	85x245 cm	135x210 cm	165x245 cm	200x300 cm	245x350 cm
Small Check 927	85x245 cm	135x210 cm	165x245 cm	200x300 cm	245x350 cm
Sugar Cube 932	85x245 cm	135x210 cm	165x245 cm	200x300 cm	245x350 cm
Corduroy 936	85x240 cm	135x200 cm	165x240 cm	200x300 cm	245x350 cm
Block 937	85x230 cm	135x210 cm	165x250 cm	200x310 cm	245x350 cm
Standing Brick 938	85x260 cm	135x200 cm	165x230 cm	200x290 cm	245x350 cm
Brick 939	-	-	-	200x300 cm	280x350 cm
Uni 924	85x230 cm	135x210 cm	165x250 cm	200x310 cm	245x350 cm

PRODUCT TYPE: Woven rug in pure wool

WEFT MATERIAL: 100% wool

WARP MATERIAL: 100% linen

TOTAL HEIGHT: approx. 7 mm

TOTAL WEIGHT: approx. 2310 g/m<sup>2</sup>

Also suitable as an exclusive wall-to-wall carpet.

PATTERN REPEAT SIZE:

Pattern	Width	Squares/Rectangles/Stripes
Checkerboard 920	approx. 200 cm approx. 280-600 cm	approx. 40x42 cm approx. 40x44 cm
Long Stripe 922	approx. 70-600 cm	approx. 4,5 cm wide
Wide Stripe 924	approx. 70-170 cm approx. 175-600 cm	approx. 30 cm approx. 40 cm
Narrow Stripe 925	approx. 70-600 cm	approx. 4,5 cm long
Small Check 927	approx. 70-600 cm	approx. 4,5x4,5 cm
Sugar Cube 932	approx. 70-600 cm	approx. 4,5x4,5 cm (report 9x9 cm, 4,5 cm on both sides)
Corduroy 936	approx. 70-600 cm	approx 1 cm long
Block 937	approx. 70-600 cm	approx. 4,5x15 cm (report approx. 9x20 cm + 5 cm ending)
Standing Brick 938	approx. 70-600 cm	approx. 4,5x15 cm
Brick 939	approx. 200-600 cm	approx. 4,5x40 cm



Wear classification:  
(EN 1307) Class 32  
Commercial General



Luxury rating:  
(EN 1307) LC1



Fire classification:  
(EN 13501-1) Cfl-s1



Acoustics:  
 $\alpha_w, E, \Delta L_w, 8B$



CE system 3 (EN 14041)

Meets the requirements for Green Label Plus



Arkad Standing Brick 938



Arkad Corduroy 936



Arkad Checkerboard 920



Arkad Small Check 927





White 8005



Light Beige 8006



Natural Beige 8008



Warm Beige 8003



Grey Beige 8002



Sand 8007



Satin 8004



Silk Grey 8010



Pale Oat 8011



Greige 8012



Taupe 8013



Mud Beige 8001



Pale Brown 8014



Dark Chocolate 7002



Dark Grey Brown 7001



Passion Fruit 7011



Raisin 7012



Espresso 7015



Brown 7009



Golden Brown 7010



Light Chocolate 7003



Hazelnut 7013



Nougat 8009



Cognac 7014



Brown Green 3014



Pastel Lime 4008



Autumn Yellow 4014



Yellow Green 3017



Olive Green 3012



Lime Green 3031



Light Green Yellow 3008



Summer Green 3015



Grass Green 3007



Moss Green 3016



Dark Umbra 3013



Khaki Green 3030



Dark Forest Green 3029



Bright Green 3005



Sage Green 3027



Green Grey 3018



Pastel Green 3011



Dark Green Grey 3004



Jade Green 3003



Green Petrol 3001



Dark Emerald 3028







Purple Grey 6207



Antique Purple 6209



Heather 6211



Light Purple Grey 6204



Soft Pink 6114



Purple 6203



Bright Purple 6202



Deep Purple 6201



Lilac 6210



Pearl Grey 5013



Beige Grey 5012



Light Natural Grey 5006



Moon Grey 5015



Silver Grey 5004



Ice Grey 5011



Grey Blue 2013



Stone Grey 5010



Natural Grey 5005



Cool Grey 5003



Concrete 5016



Seal Grey 5017



Granite Grey 5002



Thunder Grey 5008



Cool Black 5009



Natural Black 5007



Black 5001





French Nougat 9839



Cappuccino Time 9838



Fudge Fever 9712



Chocolate Temptation 9715



Espresso Moment 9713



Raisin Twist 9714



Smoky Plum 9620



Charming Lavender 9619



Purple Passion 9623



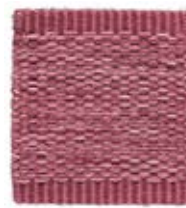
Spring Violet 9622



Blackberry Jam 9617



Cranberry Shake 9618



Magnolia Blossom 9621



Brilliant Ruby 9132



Raspberry Dream 9130



Summer Berries 9131



Sunset 9129



Sicilian Mandarin 9127



Papaya 9128



Sunny Day 9429



Sour Lime 9338



Summer Haze 9837



Winter Landscape 9835



Amazing Grey 9540



Cloudy Weather 9535



Perfect Grey 9539



Midnight Black 9534



Almost Black 9537



Sea Mussel 9536



Deep in the Ocean 9236



Dusty Turquoise 9235



Glacier Blue 9234



Polarized Blue 9239



Summer Sky 9240



Beautiful Dark Blue 9238



Pacific 9237



Emerald Oasis 9336



Woodland Lake 9538



Grey Pear 9337



Green Apple 9334



Summer Grass 9332



Magic Green 9335



Kalamata 9333

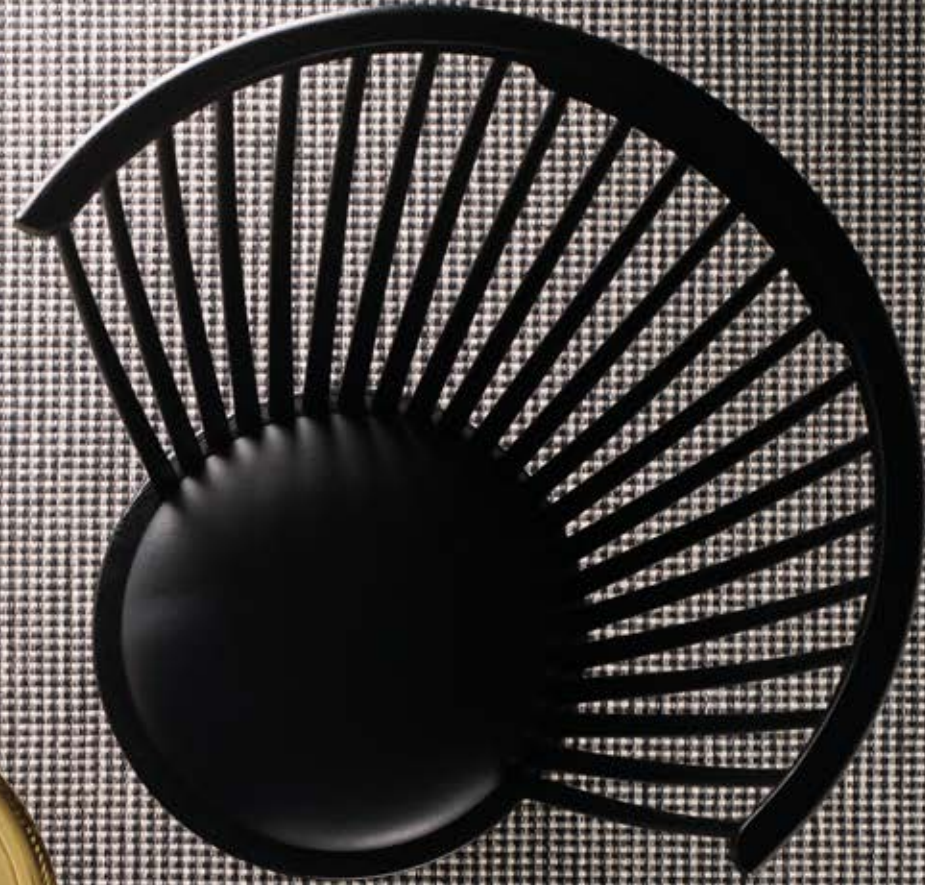






# BARDOT™

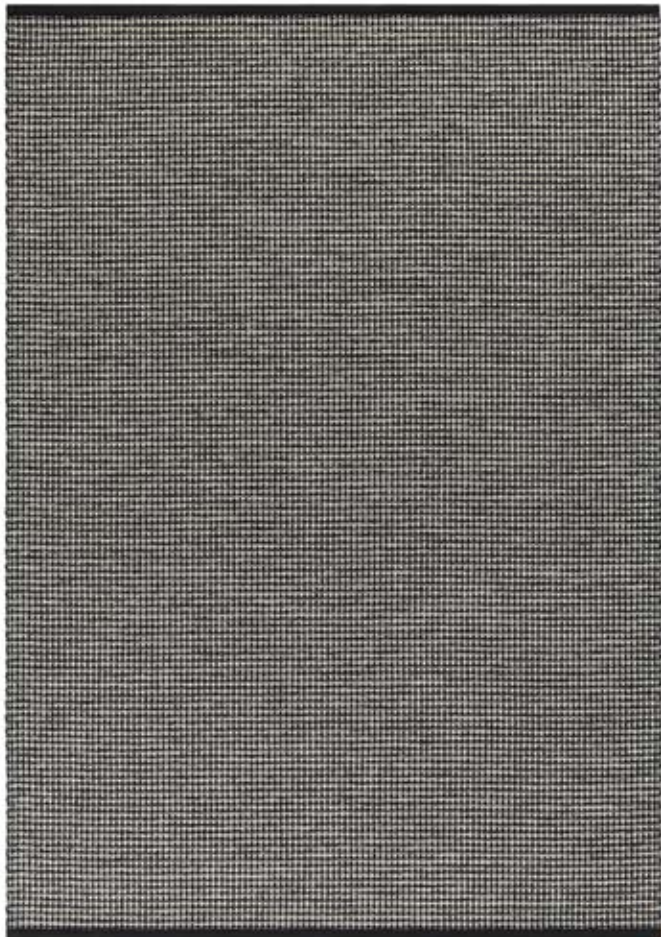
GUNILLA LAGERHEM ULLBERG





*Bardot is a woven rug in 100 percent wool, inspired by classic Bardot checks. The small checks form a subtle pattern, and the five sophisticated color combinations make the rug easily adaptable to a variety of settings – from private homes to public environments. Bardot is also excellent for installing as an exclusive wall-to-wall carpet.*

**BARDOT**  
Rug 200x300 cm, Black 500



**BARDOT COLORS**  
Samples 15x15 cm



Beige 800



Blue 200



Cassis 620



Green 300



Black 500

PRODUCT TYPE: Woven rug in pure wool

WEFT MATERIAL: 100% wool

WARP MATERIAL: 100% linen

SIZE: Custom made sizes, width 70–600 cm upon request.

Or choose amongst our suggested sizes; 90x240 cm, 140x200 cm, 170x240 cm, 200x300 cm, 250x350 cm, 300x400 cm, 350x450 cm.

Also suitable as an exclusive wall-to-wall carpet.

TOTAL HEIGHT: approx. 5 mm

TOTAL WEIGHT: approx. 2200 g/m<sup>2</sup>



Wear classification:  
(EN 1307) Class 32  
Commercial General



Wear classification:  
(EN 1307) Class 23  
Domestic Heavy



Luxury rating:  
(EN 1307) LC1



Fire classification:  
(EN 13501-1) Cfl-s1



Suitable for Castor chair  
only with additional backing:  
Occasional use (EN 1307)



Acoustics:  
 $\alpha_w$  E,  $\Delta L_w$  8B



CE system 3 (EN 14041)

Meets the requirements for Green Label Plus



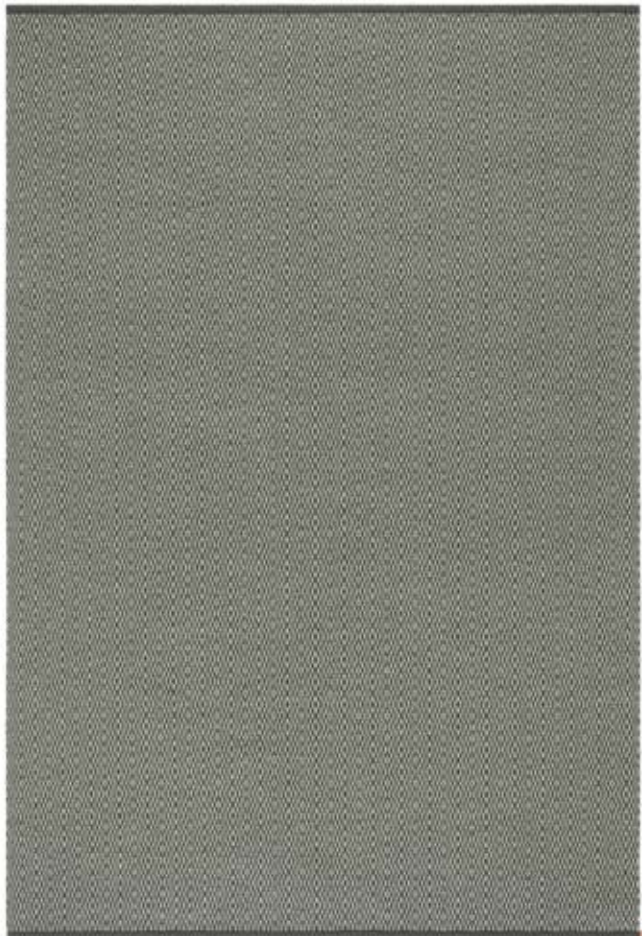
# BLOOM ICON™

GUNILLA LAGERHEM ULLBERG



*The Bloom pattern in wool yarn is a romantic, stylish and timeless member of Kasthall's Häggå family. To create Bloom, The Kasthall Design Studio got their inspiration from plants and various oil paintings, where barren nature meets foggy city. Even the landscape around our factory, with beautiful natural roughness and mist-shrouded lakes, fields and meadows have influenced the expression and color nuances Lily, Dew, Reed, Thistle and Artichoke.*

**BLOOM ICON**  
Rug 170x240 cm, Reed 522



**BLOOM ICON COLORS**  
Samples 30x30 cm



Lily 880



Dew 581



Reed 522



Thistle 520



Artichoke 551

**PRODUCT TYPE:** Woven rug in pure wool  
**WEFT MATERIAL:** 100% wool  
**WARP MATERIAL:** 100% linen  
**SIZE:** Custom made sizes, width 70-600 cm upon request.  
 Or choose amongst our suggested sizes; 85x240 cm,  
 135x200 cm, 160x240 cm, 195x300 cm, 240x350 cm,  
 290x400 cm, 340x450 cm. Also suitable as an exclusive  
 wall-to-wall carpet.

**TOTAL HEIGHT:** approx. 5 mm  
**TOTAL WEIGHT:** approx. 2200 g/m<sup>2</sup>



Wear classification:  
(EN 1307) Class 32  
Commercial General



Wear classification:  
(EN 1307) Class 23  
Domestic Heavy



Luxury rating:  
(EN 1307) LC1



Fire classification:  
(EN 13501-1) Cfl-s1



Suitable for Castor chair  
only with additional backing:  
Occasional use (EN 1307)



Acoustics:  
 $\alpha_w$  E,  $\Delta L_w$  8B



CE system 3 (EN 14041)

Meets the requirements for Green Label Plus



# BOUCLÉ CORDUROY™

KASTHALL DESIGN STUDIO

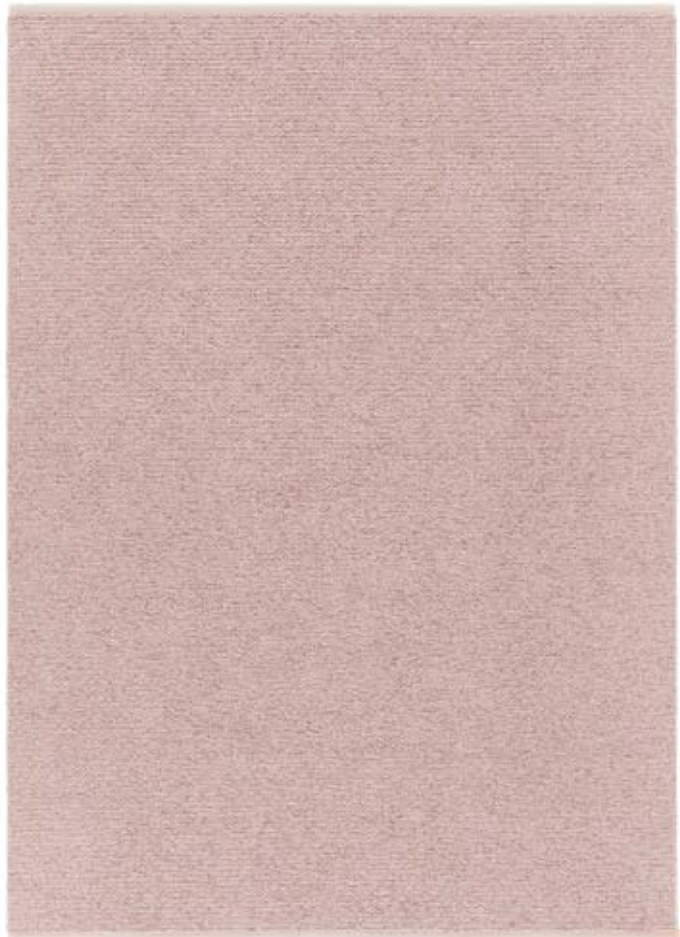




*Corduroy is a classic pattern in our Arkad family designed by Gunilla Lagerhem Ullberg during her years at Kasthall. In 2018 we have focused on the visuality of this elegant stripe, creating a rug with a decorative, lively surface and immense textile feel. To achive this Kasthall's Design Studio developed a special bouclé yarn in wool and linen which lends the rug a dry yet luxurious and very contemporary look. Bouclé Corduroy is a hard wearing rug for the private home as well as for public spaces. For the colors we've been inspired by the richness of continental food culture.*

**BOUCLÉ CORDUROY**

Rug 200x300 cm, Pink Maccaron 610



**BOUCLÉ CORDUROY COLORS**

Samples 15x15 cm



Meringue 800



Earl Grey 501



Pink Maccaron 610



Chocolate Brown 700



Black tea 500

PRODUCT TYPE: Woven Bouclé rug in pure wool and linen

WEFT MATERIAL: 50% wool, 50% linen

WARP MATERIAL: 100% linen

SIZE: Custom made sizes, width 70-600 cm upon request.

Or choose amongst our suggested sizes; 90x240 cm, 140x200 cm, 170x240 cm, 200x300 cm, 250x350 cm, 300x400 cm, 350x450 cm.

TOTAL HEIGHT: approx. 10 mm

TOTAL WEIGHT: approx. 3000 g/m<sup>2</sup>



Wear classification:  
(EN 1307) Class 32  
Commercial General



Suitable for Castor chair  
only with additional backing:  
Occasional use (EN 1307)



Fire classification:  
(EN 13501-1) Cfl-s1

Meets the requirements for Green Label Plus

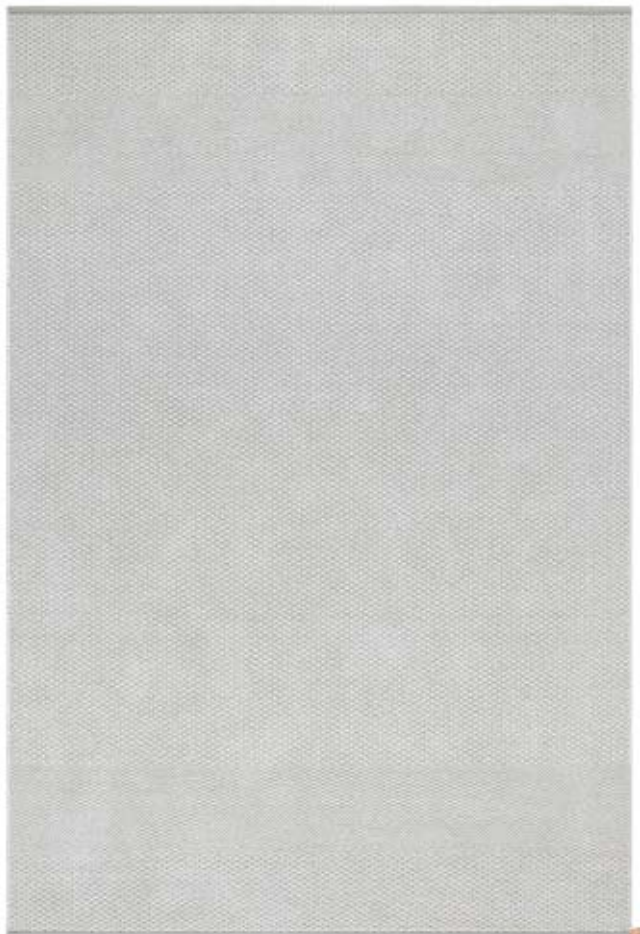
# CASTLE™

MAJA JOHANSSON STARANDER



*Designer Maja Johansson's rug, Castle, is influenced by antique jacquard tapestries, velvet drapes, ceramic structures and art by John Bauer and Gustav Klimt. The rug, in chenille, linen and wool yarns, consist of three pattern images, two of which function as borders and the third representing the dominating part of the rug's surface. The elegant collection of small scale patterns leave plenty of room for the materials and stylish color palette to shine through. The result is a combination of quiet drama and raw lustre.*

CASTLE  
Rug 200x300 cm, Glacier 504



CASTLE COLORS  
Samples 30x60 cm



Glacier 504



Dove 502



Clay 501



Verona 301



Emerald 502



Saffron 400

PRODUCT TYPE: Woven chenille rug in pure wool and linen  
WEFT MATERIAL: 70% wool, 30% linen  
WARP MATERIAL: 100% linen  
SIZE: Custom made sizes, width 70–350 cm upon request.  
Or choose amongst our suggested sizes: 90x240 cm, 140x200 cm, 170x240 cm, 200x300 cm, 250x350 cm, 300x400 cm, 350x450 cm.  
TOTAL HEIGHT: approx. 8 mm  
TOTAL WEIGHT: approx. 2400 g/m<sup>2</sup>



Wear classification:  
(EN 1307) Class 32  
Commercial General



Wear classification:  
(EN 1307) Class 23  
Domestic Heavy



Fire classification:  
(EN 13501-1) Cfl-s1

Meets the requirements for Green Label Plus



# CHENILLE FAMILY™

KASTHALL DESIGN STUDIO





*Chenille is a collection made of Kasthall's most popular designs, woven with a chenille yarn of wool and linen that is manufactured by hand in Kasthall's Kinna factory. This unique effect yarn is made to order for each new rug and woven shortly thereafter in the desired design. The element of linen adds shine and a little harshness within the wool, and every rug exudes luxury in true Kasthall spirit, with a beautiful, lustrous finish. Chenille comes in colors Glacier, Verona, Saffron, Dove, Clay and Emerald, in six different patterns: Charles, Goose Eye, Goose Eye XL, Bloom, Ingrid and Corduroy.*

CHENILLE FAMILY PATTERNS



Charles

Goose Eye

Goose Eye XL



Bloom

Ingrid

Corduroy

CHENILLE FAMILY COLORS



Glacier 304

Dove 302

Clay 301



Emerald 302

Saffron 400

Verona 301

PRODUCT TYPE: Woven chenille rug in pure wool and linen

WEFT MATERIAL: 70% wool, 30% linen

WARP MATERIAL: 100% linen

SIZE: Custom made sizes, width 70-600 cm upon request. Or choose amongst our suggested sizes: 90x240 cm, 140x200 cm, 170x240 cm, 200x300 cm, 250x350 cm, 300x400 cm, 350x450 cm

TOTAL HEIGHT: approx. 8 mm

TOTAL WEIGHT: approx. 2400 g/m<sup>2</sup>



Wear classification:  
(EN 1307) Class 32  
Commercial General



Wear classification:  
(EN 1307) Class 23  
Domestic Heavy



Fire classification:  
(EN 13501-1) Cfl-s1

Meets the requirements for Green Label Plus



# DORIS™

GUNILLA LAGERHEM ULLBERG

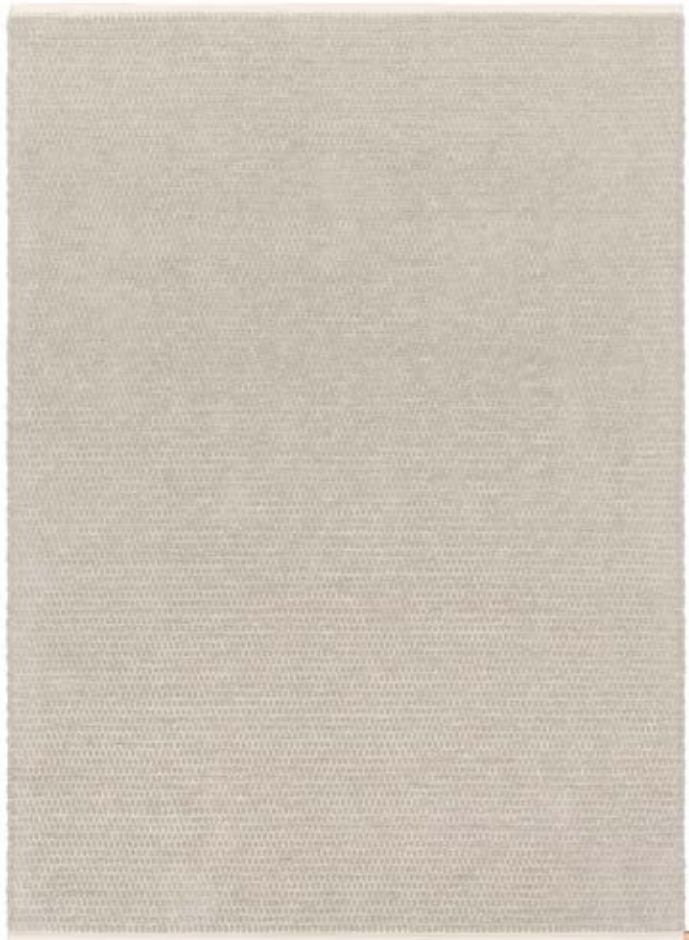




*Doris is a woven rug in pure wool that has been combined with two of Kasthall's unique yarns – the fluffy chenille yarn that creates the rug's pattern and our classic wool yarn, which is used in many of our woven collections. The geometric dot pattern is inspired by the shape of different precious stones and gives the surface of the rug a beautiful structure.*

## DORIS

Rug 170x240 cm, Silver Beige 88o



## DORIS COLORS

Samples 15x15 cm



Silver Beige 88o



Golden White 88r



White Pearl 8o



Ruby Red 6z

PRODUCT TYPE: Woven chenille rug in pure wool

WEFT MATERIAL: 100% wool

WARP MATERIAL: 100% linen

SIZE: Custom made sizes, width 70–600 cm upon request.

Or choose amongst our suggested sizes: 90x240 cm, 140x200 cm, 170x240 cm, 200x300 cm, 250x350 cm, 300x400 cm, 350x450 cm.

TOTAL HEIGHT: approx. 13 mm

TOTAL WEIGHT: approx. 2900 g/m<sup>2</sup>



Wear classification:  
(EN 1307) Class 31  
Commercial Moderate



Fire classification:  
(EN 13501-1) Cl-s1



Suitable for Castor chair  
only with additional backing:  
Occasional use (EN 1307)

Meets the requirements for Green Label Plus

# ESTHER™

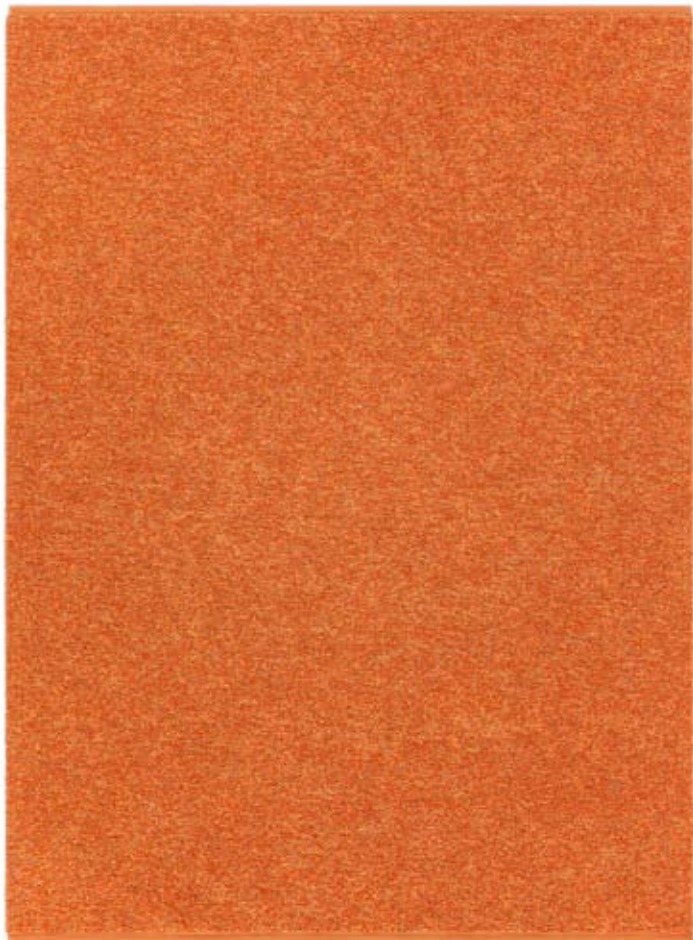
GUNILLA LAGERHEM ULLBERG





*Esther bouclé rug is hand woven in a curly yarn developed and manufactured at Kasthall's factory. The look is inspired by the close-cropped fleece of sheep, and the mix of linen and wool in various shades creates such a marbled, shimmering surface. Being shaft-woven in pure natural materials make Esther a rug well suited to hard wearing environment. Esther is also available as a wall-to-wall carpet. In 2018 Esther comes in four colors emphasizing its beautiful texture in a contemporary palette from greige to tangerine.*

**ESTHER**  
Rug 170x240 cm, Tangerine Orange 441



**ESTHER COLORS**  
Samples 15x15 cm



PRODUCT TYPE: Woven bouclé rug in pure wool and linen

WEFT MATERIAL: 50% wool, 50% linen

WARP MATERIAL: 100% linen

SIZE: Custom made sizes, width 70–600 cm upon request.

Or choose amongst our suggested sizes: 90x240 cm, 140x200 cm, 170x240 cm, 200x300 cm, 250x350 cm, 300x400 cm, 350x450 cm.

Also suitable as an exclusive wall-to-wall carpet.

TOTAL HEIGHT: approx. 10 mm

TOTAL WEIGHT: approx. 3000 g/m<sup>2</sup>



Wear classification:  
(EN 1307) Class 32  
Commercial General



Luxury rating:  
(EN 1307) LC1



Suitable for Castor chair  
only with additional backing:  
Occasional use (EN 1307)



Fire classification:  
(EN 13501-1) Cfl-s1



CE system 3 (EN 14041)

Meets the requirements for Green Label Plus

# GABRIELLE™

MAJA JOHANSSON STARANDER





*Gabrielle is hand woven in a new bouclé quality made from 100 percent linen which lends the rug a light and dry look. By applying linear effects along both warp and weft, designer Maja Johansson Starander has transformed artistic passion and skilled handicraft into an exquisite rug. Inspiration for the look was drawn from vintage textiles, carefully mended details on clothes and every day objects. And, from the craft of the hand as seen in traditional embroidery. Gabrielle comes with new proportions, presented as a slightly asymmetric square rug in three unique color schemes.*

**GABRIELLE**  
Rug 170x200 cm, Minth 250



**GABRIELLE COLORS**  
Samples 30x60 cm



Mint 250

Gold 750

Cinnamon 770

PRODUCT TYPE: Woven bouclé rug in pure wool and linen

WEFT MATERIAL: 70% wool, 30% linen

WARP MATERIAL: 100% linen

SIZE: Custom made sizes, width 70-600 cm.

Or choose amongst our suggested sizes; 90x240 cm, 170x200 cm, 200x240 cm, 250x300 cm, 300x350 cm.

TOTAL HEIGHT: approx. 7 mm

TOTAL WEIGHT: approx. 3350 g/m<sup>2</sup>

BACKING: The rug is always delivered with backing.



Wear classification:  
(EN 14215) Class 21  
Domestic Moderate



Luxury rating:  
(EN 14215) LC1



Fire classification:  
(EN 13501-1) Cf-s1



# GOOSE EYE ICON™

GUNILLA LAGERHEM ULLBERG





*The Goose Eye Icon is a collection of five color combinations where the design team at Kasthall has created a modern twist on the classic shape with New York inspired colors. The mixes of yarn colors create a slightly “blurred” version of the pattern, giving the rugs a very contemporary look.*

**GOOSE EYE ICON**

Rug 170x240 cm, Central Park 250



**GOOSE EYE ICON COLORS**

Samples 30x30 cm



Soho 580



Brooklyn 750



Chelsea 850



Tribeca 550



Central Park 250

PRODUCT TYPE: Woven rug in pure wool

WEFT MATERIAL: 100% wool

WARP MATERIAL: 100% linen

SIZE: Custom made sizes, width 70–600 cm upon request.

Or choose amongst our suggested sizes: 85x240 cm, 135x200 cm, 160x240 cm, 195x300 cm, 240x350 cm, 290x400 cm, 340x450 cm.

For other colours, see Häggå collection. Also suitable as an exclusive wall-to-wall carpet.

TOTAL HEIGHT: approx. 5 mm

TOTAL WEIGHT: approx. 2200 g/m<sup>2</sup>



Wear classification:  
(EN 1307) Class 33  
Commercial Heavy



Luxury rating:  
(EN 1307) LC1



Fire classification:  
(EN 13501-1) Cfl-s1



Suitable for Castor chair  
only with additional backing:  
Occasional use (EN 1307)



Acoustics:  
 $\alpha_w$  E,  $\Delta L_w$  8B



CE system 3 (EN 14041)

Meets the requirements for Green Label Plus



# GOOSE EYE XL ICON™

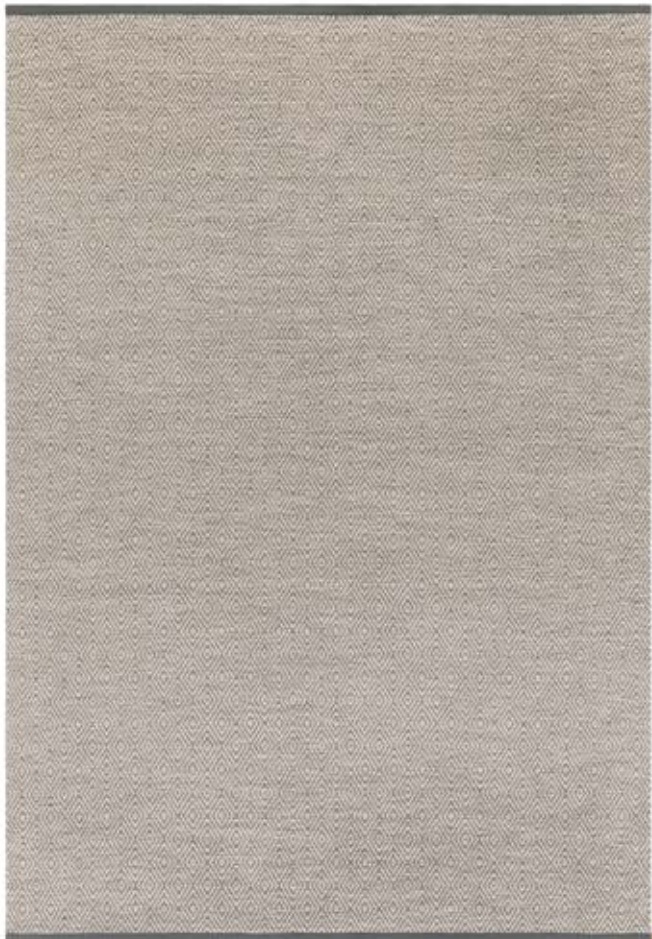
GUNILLA LAGERHEM ULLBERG





*When Gunilla Lagerhem Ullberg was developing the next addition to the Häggå family, she got her inspiration from ethnic fashion fabrics and costumes. Now our most popular pattern is updated with a new, modern and confident expression. With an enlarged goose eye and five exciting color combinations, carefully composed to create the perfect conditions for another modern classic.*

**GOOSE EYE XL ICON**  
Rug 170x240 cm, Rose Quarts 680



**GOOSE EYE XL ICON COLORS**  
Samples 15x15 cm



Straw 480



Misty Blue 250



Rose Quarts 680



Stone Grey 580



Denim Blue 220

PRODUCT TYPE: Woven rug in pure wool

WEFT MATERIAL: 100% wool

WARP MATERIAL: 100% linen

SIZE: Custom made sizes, width 70–600 cm upon request.

Or choose amongst our suggested sizes: 85x240 cm, 135x200 cm, 160x240 cm, 195x300 cm, 240x350 cm, 290x400 cm, 340x450 cm.

For other colours, see Häggå collection. Also suitable as an exclusive wall-to-wall carpet.

TOTAL HEIGHT: approx. 5 mm

TOTAL WEIGHT: approx. 2200 g/m<sup>2</sup>



Wear classification:  
(EN 1307) Class 33  
Commercial Heavy



Luxury rating:  
(EN 1307) LC1



Fire classification:  
(EN 13501-1) CF1-s1



Suitable for Castor chair  
only with additional backing:  
Occasional use (EN 1307)



Acoustics:  
 $\alpha_w$  E,  $\Delta L_w$  8B



CE system 3 (EN 14041)

Meets the requirements for Green Label Plus



# GRETTA™

GUNILLA LAGERHEM ULLBERG

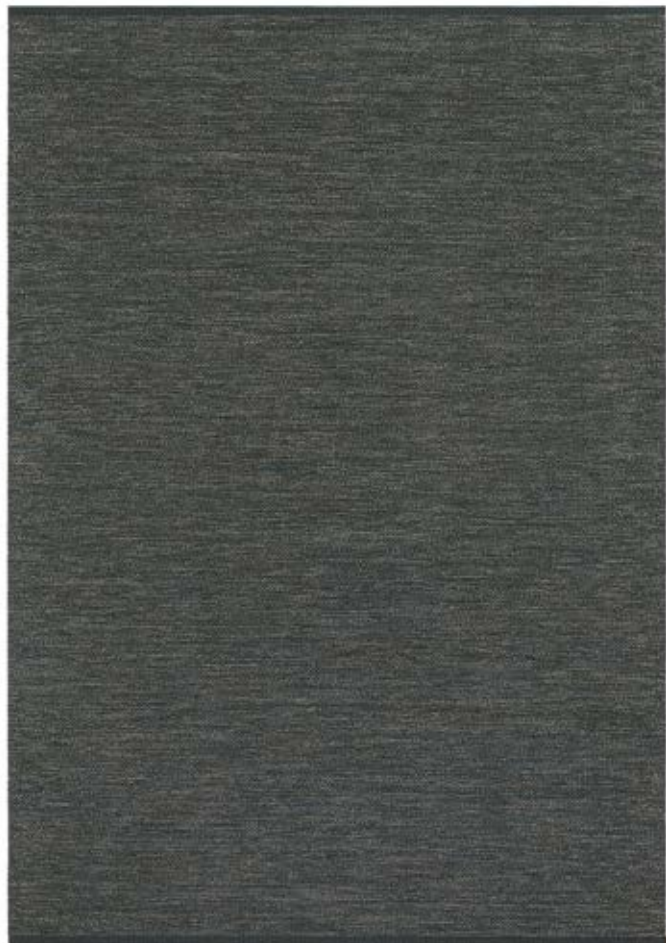




*Greta is a woven mottled rug in 100 percent wool. Each rug contains around ten different yarns that form a beautiful melange together. Greta is suited to most settings thanks to its complex color combination, and the rug comes in both a nature-inspired color scheme and a bold scheme inspired by cotton textiles of the 1960s. Greta also works beautifully as an exclusive wall-to-wall carpet.*

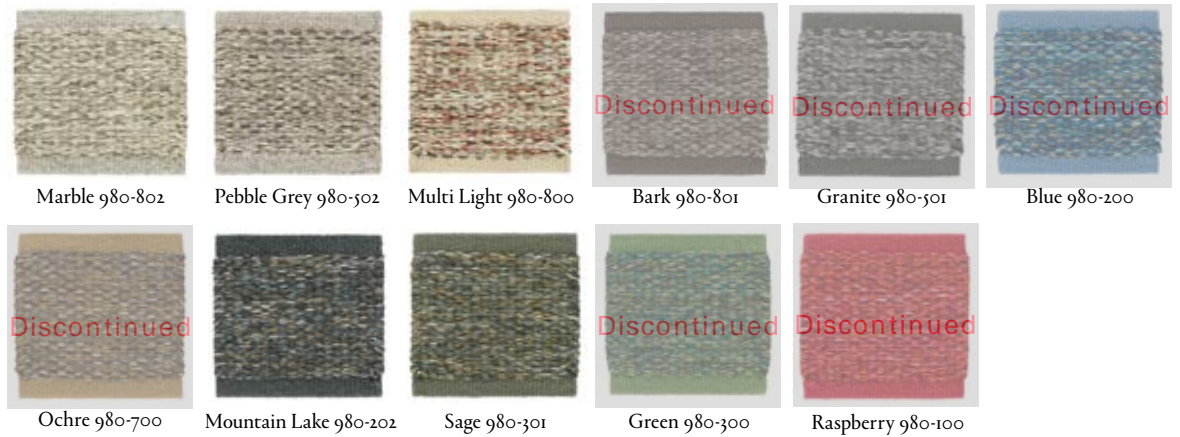
**GRETA**

Rug 170x240 cm, Mountain Lake 980-202



**GRETA COLORS**

Samples 15x15 cm



PRODUCT TYPE: Woven rug in pure wool

WEFT MATERIAL: 100% wool

WARP MATERIAL: 100% linen

SIZE: Custom made sizes, width 70–600 cm upon request.

Or choose amongst our suggested sizes: 90x240 cm, 140x200 cm, 170x240 cm, 200x300 cm, 250x350 cm, 300x400 cm, 350x450 cm.

Also suitable as an exclusive wall-to-wall carpet.

TOTAL HEIGHT: approx. 5 mm

TOTAL WEIGHT: approx. 2200 g/m<sup>2</sup>



Wear classification:  
(EN 1307) Class 33  
Commercial Heavy



Luxury rating:  
(EN 1307) LC1



Fire classification:  
(EN 13501-1) Cf-s1



Suitable for Castor chair  
only with additional backing:  
Occasional use (EN 1307)



Acoustics:  
 $\alpha_{w,E,\Delta L_w}$  8B



CE system 3 (EN 14041)

Meets the requirements for Green Label Plus

# GRETA SHIMMER™

GUNILLA LAGERHEM ULLBERG

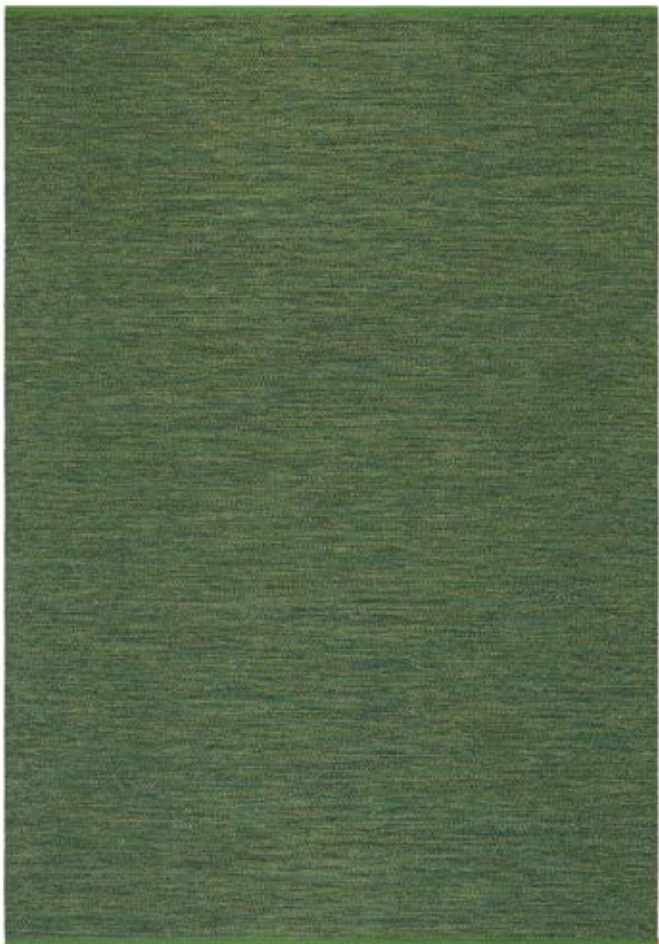




*Gunilla Lagerhem Ullberg's Greta rug is woven in 100 percent wool. Each rug combines some ten different colors that, together, create a beautiful mottling in Kasthall's firm, iconic wool quality. The complex color composition means the rug can match most design environments. Greta also works great as an exclusive wall-to-wall carpet. There are elements of Lurex in a typical Kasthall color spectrum, with playful influences from haute couture fabrics, which add glow and magic to the floor.*

**GRETA SHIMMER**

Rug 200x300 cm, Green Gold 300G



**GRETA SHIMMER COLORS**

Samples 30x30 cm



Marble Gold 802G



Pebble Grey Silver 502S



Sage Silver 301S



Mountain Lake Silver 202S



Green Gold 300G

PRODUCT TYPE: Woven rug in pure wool and Lurex

WEFT MATERIAL: 99% wool, 1% Lurex

WARP MATERIAL: 100% linen

SIZE: Custom made sizes, width 70–600 cm upon request.

Or choose amongst our suggested sizes: 90x240 cm, 140x200 cm, 170x240 cm, 200x300 cm, 250x350 cm, 300x400 cm, 350x450 cm.

Also suitable as an exclusive wall-to-wall carpet.

TOTAL HEIGHT: approx. 5 mm

TOTAL WEIGHT: approx. 2200 g/m<sup>2</sup>



Wear classification:  
(EN 1307) Class 31  
Commercial Moderate



Luxury rating:  
(EN 1307) LC1



Acoustics:  
 $\alpha_w$ , E,  $\Delta L_w$  8B



Fire classification:  
(EN 13501-1) Cf-s1



CE system 3 (EN 14041)

Meets the requirements for Green Label Plus



<sup>TM</sup>  
**HAPPY**

GUNILLA LAGERHEM ULLBERG





*Happy is a woven rug of wool and linen, colorful and charismatic, with stripes that both harmonise and contrast. A charming relative to our rug Doris, the name Happy comes from the lovely sensation you get when you walk on it. Gunilla Lagerhem Ullberg, named the five different color combinations after feelings and life situations that she liked: Passion, Summer Holiday, Winter Night, Potato Digging and Harmony. Happy is a fantastic piece of handicraft. All the color and yarn changes are painstaking work that requires patience and great professional skill from the Kasthall weavers.*

**HAPPY**  
Rug 170x240 cm, Passion 1001



**HAPPY COLORS**  
Samples 30x60 cm



Harmony 8001

Winter Night 5001

Potato Digging 7001

Summer Holiday 3001

Passion 1001

**PRODUCT TYPE:** Woven chenille- and bouclé rug in pure wool and linen

**WEFT MATERIAL:** 90% wool, 10% linen

**WARP MATERIAL:** 100% linen

**SIZE:** Custom made sizes, width 70–600 cm upon request.

Or choose amongst our suggested sizes, 90x240 cm, 140x200 cm, 170x240 cm, 200x300 cm, 250x350 cm, 300x400 cm, 350x450 cm.

**TOTAL HEIGHT:** approx. 13 mm

**TOTAL WEIGHT:** approx. 2700 g/m<sup>2</sup>



Wear classification:  
(EN 1307) Class 31  
Commercial Moderate



Suitable for Castor chair only  
with additional backing:  
Occasional Use (EN 1307)



Fire classification:  
(EN 13501-1) Cf1-s1

Meets the requirements for Green Label Plus

# HARVEST<sup>TM</sup>

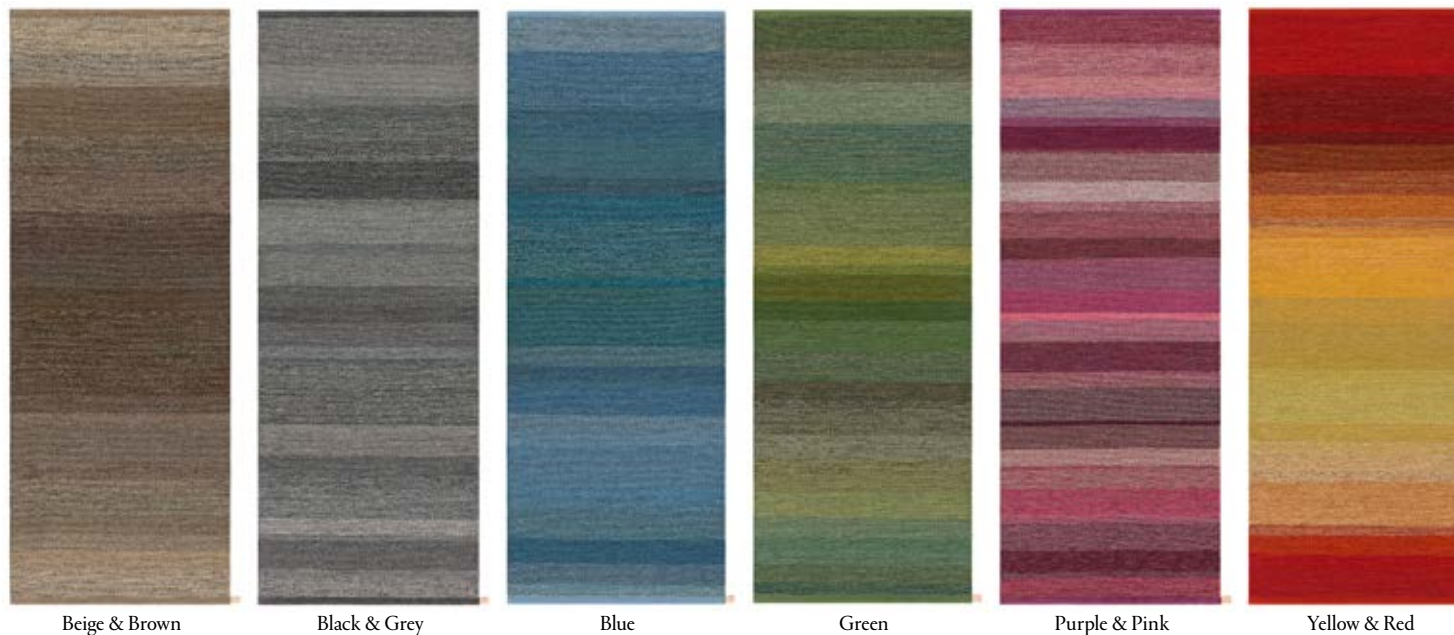
ELLINORELIASSON





*Harvest is a creation of the Kasthall Design Studio, which saw an opportunity to further the company's environmental stewardship by making use of leftover spools of yarn from the production process. The Harvest range consists of modern woven rugs in colour shifting hues, made entirely from residual yarn, each rug with a unique appearance. The colour concepts are: Green, yellow and red, purple and pink, blue, beige and brown, black and grey. Delivery times on these rugs may vary depending on whether the color concept you selected has enough residual yarn.*

**HARVEST COLORS**  
Rugs 90x240 cm




PRODUCT TYPE: Woven rug made of residual yarn in pure wool.  
 WEFT MATERIAL: 100% wool  
 WARP MATERIAL: 100% linen  
 SIZE: Custom made sizes, width 70–600 cm upon request. Or choose amongst our suggested sizes: 90x240 cm, 140x200 cm, 170x240 cm, 200x300 cm, 250x350 cm, 300x400 cm, 350x450 cm. Also suitable as an exclusive wall-to-wall carpet.  
 TOTAL HEIGHT: approx. 5 mm  
 TOTAL WEIGHT: approx. 2200 g/m<sup>2</sup>


 Wear classification: (EN 1307) Class 33 Commercial Heavy

 Luxury rating: (EN 1307) LC1

 Acoustics:  $\alpha_w, E, \Delta L_w$  8B

 Suitable for Castor chair only with additional backing: Occasional use (EN 1307)

 Fire classification: (EN 13501-1) Cfl-s1

 CE system 3 (EN 14041)

Meets the requirements for Green Label Plus



# HÄGGÅ<sup>TM</sup>

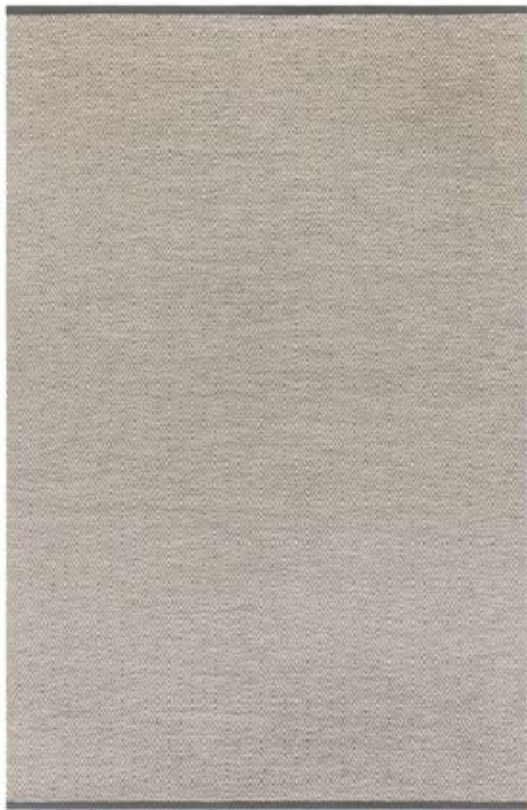
GUNILLA LAGERHEM ULLBERG



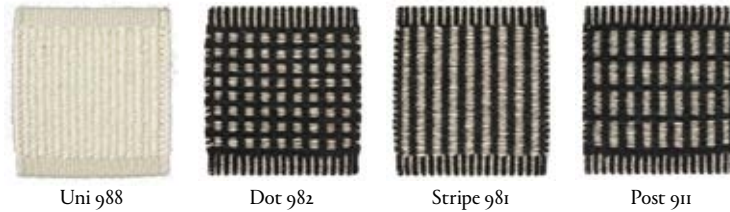


*A shaft-woven rug and exclusive wall-to-wall carpet that gives you the freedom to combine patterns, colors and accents precisely the way you want. You can choose from nine different patterns. Within group one you can combine them in the way that appeals to you. Patterns within group two can only be used solid. You can choose between mixed and single-color yarns. You can also add accent colors in stripes, or divide the rug into several color fields – the possibilities are endless.*

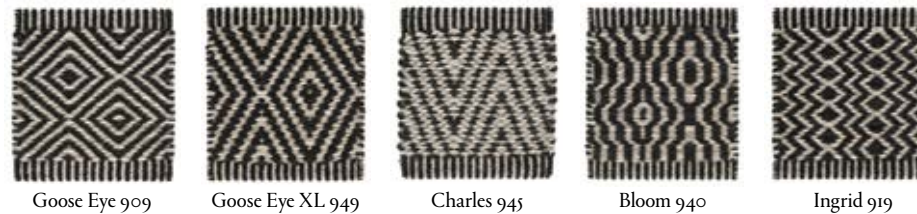
HÄGGÅ GOOSE EYE XL  
Rug 200x300 cm, Rosequarts 680



HÄGGÅ PATTERNS  
Group 1 – Samples 15x15 cm



Group 2 – Samples 15x15 cm



PRODUCT TYPE: Woven rug in pure wool  
WEFT MATERIAL: 100% wool  
WARP MATERIAL: 100% linen  
TOTAL HEIGHT: approx. 5 mm  
TOTAL WEIGHT: approx. 2200 g/m<sup>2</sup>  
SIZE: Custom made sizes, width 70–600 cm upon request.  
Also suitable as an exclusive wall-to-wall carpet.

SUGGESTED SIZES:

Group 1:					
Uni 988, Dot 982, Stripe 981, Post 911	90x240 cm	140x200 cm	170x240 cm	200x300 cm	250x350 cm
Group 2:					
Goose Eye 909, Goose Eye XL 949, Charles 945, Bloom 940, Ingrid 919	85x240 cm	135x200 cm	160x240 cm	195x300 cm	240x350 cm



Wear classification:  
(EN 1307) Class 33  
Commercial Heavy



Luxury rating:  
(EN 1307) LC1



Fire classification:  
(EN 13501-1) Cfl-s1



Suitable for Castor chair  
only with additional backing:  
Occasional use (EN 1307)



Acoustics:  
 $\alpha_w, E, \Delta L_w, 8B$



CE system 3 (EN 14041)

Thermal resistance 1.8 m<sup>2</sup> K/W (TOG 1,007). Meets the requirements for Green Label Plus.

Häggå is more than a rug – it is a complete freedom of choice! Our truly iconic rug collection Häggå shows that classic designs also can be innovative.

The collection gives you the freedom to combine patterns, colors and accents precisely the way you want. You can choose from 159 different colors and 9 patterns and combine them in the way that appeals to you – the possibilities are endless.

Kasthall Rug Designer is a web based application where you can design your own unique woven rug using different patterns, colors and sizes.

Everything that can be designed in Rug Designer can be done in our production – so you never have to worry about that while designing. Your rug will be one of a kind, specially made by you. Have a look at our website and get inspired by what can be done!

HÄGGÅ Dot 9130



HÄGGÅ Goose Eye 909 "Wave"



HÄGGÅ Stripe 9537-5006



HÄGGÅ "Henry"





White 8005



Light Beige 8006



Natural Beige 8008



Warm Beige 8003



Grey Beige 8002



Sand 8007



Satin 8004



Silk Grey 8010



Pale Oat 8011



Greige 8012



Taupe 8013



Mud Beige 8001



Pale Brown 8014



Dark Chocolate 7002



Dark Grey Brown 7001



Passion Fruit 7011



Raisin 7012



Espresso 7015



Brown 7009



Golden Brown 7010



Light Chocolate 7003



Hazelnut 7013



Nougat 8009



Cognac 7014



Brown Green 3014



Pastel Lime 4008



Autumn Yellow 4014



Yellow Green 3017



Olive Green 3012



Lime Green 3031



Light Green Yellow 3008



Summer Green 3015



Grass Green 3007



Moss Green 3016



Dark Umbra 3013



Khaki Green 3030



Dark Forest Green 3029



Bright Green 3005



Sage Green 3027



Green Grey 3018



Pastel Green 3011



Dark Green Grey 3004



Jade Green 3003



Green Petrol 3001



Dark Emerald 3028









Purple Grey 6207



Antique Purple 6209



Heather 6211



Light Purple Grey 6204



Soft Pink 6114



Purple 6203



Bright Purple 6202



Deep Purple 6201



Lilac 6210



Pearl Grey 5013



Beige Grey 5012



Light Natural Grey 5006



Moon Grey 5015



Silver Grey 5004



Ice Grey 5011



Grey Blue 2013



Stone Grey 5010



Natural Grey 5005



Cool Grey 5003



Concrete 5016



Seal Grey 5017



Granite Grey 5002



Thunder Grey 5008



Cool Black 5009



Natural Black 5007



Black 5001



French Nougat 9839



Cappucino Time 9838



Fudge Fever 9712



Chocolate Temptation 9715



Espresso Moment 9713



Raisin Twist 9714



Smoky Plum 9620



Charming Lavender 9619



Purple Passion 9623



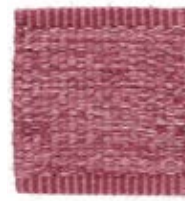
Spring Violet 9622



Blackberry Jam 9617



Cranberry Shake 9618



Magnolia Blossom 9621



Brilliant Ruby 9132



Raspberry Dream 9130



Summer Berries 9131



Sunset 9129



Sicilian Mandarin 9127



Papaya 9128



Sunny Day 9429



Sour Lime 9338



Summer Haze 9837



Winter Landscape 9835



Amazing Grey 9540



Cloudy Weather 9535



Perfect Grey 9539



Midnight Black 9534



Almost Black 9537



Sea Mussel 9536



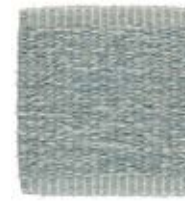
Deep in the Ocean 9236



Dusty Turquoise 9235



Glacier Blue 9234



Polarized Blue 9239



Summer Sky 9240



Beautiful Dark Blue 9238



Pacific 9237



Emerald Oasis 9336



Woodland Lake 9538



Grey Pear 9337



Green Apple 9334



Summer Grass 9332



Magic Green 9335



Kalamata 9333





## IT ALL STARTS WITH A FEELING

In addition to our collection, Kasthall Design Studio offers the possibility to create a completely bespoke rug or carpet – whether it's a complex textile tapestry, an unconventional shape, a unique pattern, or simply a perfectly matched color. In the heart of our factory is our very own yarn stock of more than 6 000 colors.

One of the things that makes Kasthall unique is our ability to offer color coordination throughout our extensive collection of rugs and carpets. You can mix and match our different qualities – from woven wool rugs and long-pile linen rugs to wall-to-wall carpets – and still maintain a coordinated color scheme. And since all our rugs are made to order, if you cannot find the exact nuance you are looking for in our collections, we are happy to create a customized color blend for you. For the Arkad and Häggå collections you have a color palette with almost 160 shades to choose from, both mixed and single-color yarns.

# INGRID ICON™

GUNILLA LAGERHEM ULLBERG

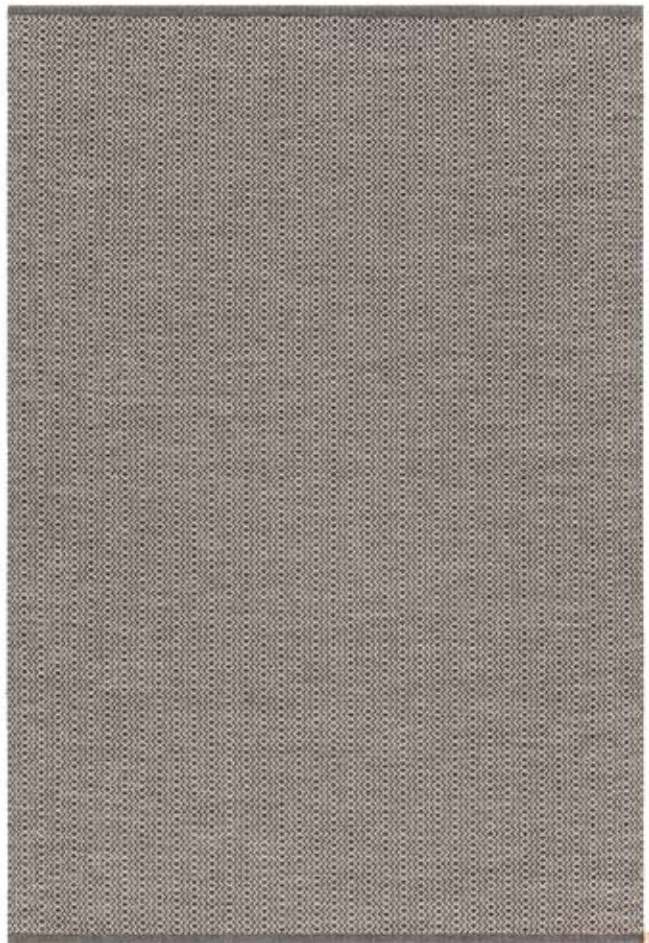




*Ingrid Icon is hand woven on a linen warp in a mix of fine wool and Kasthall's own hair yarn. Gunilla Lagerhem Ullberg created this pattern in 2008 inspired by textile handicraft and the traditional knitted sweater which is a part of our Scandinavian heritage. Updated in a palette reflecting both rural roots and urban city life the modernity of Ingrid Icon is emphasized. A new striped border adds to the contemporary feel. Ingrid Icon comes in a variety of sizes from runners to wall-to-wall carpet.*

**INGRID ICON**

Rug 170x240 cm, Asphalt-Grey 582



**INGRID ICON COLORS**

Samples 15x15 cm



White-Beige 858



Yellow-White 481



Orange-White 482



Red-White 180



Green-White 380



Brown-Grey 751



Black-White 855



Asphalt-Grey 582



Stone Grey 580

PRODUCT TYPE: Woven rug in pure wool

WEFT MATERIAL: 100% wool

WARP MATERIAL: 100% linen

TOTAL HEIGHT: approx. 5 mm

TOTAL WEIGHT: approx. 2200 g/m<sup>2</sup>

SIZE: Custom made sizes, width 70–600 cm upon request. Or choose amongst our suggested sizes; 85x240 cm, 135x200 cm, 160x240 cm, 195x300 cm, 240x350 cm, 290x400 cm, 340x450 cm, 390x500 cm. Also suitable as an exclusive wall-to-wall carpet.



Wear classification:  
(EN 1307) Class 33  
Commercial Heavy



Luxury rating:  
(EN 1307) LC1



Fire classification:  
(EN 13501-1) CF-s1



Suitable for Castor chair  
only with additional backing:  
Occasional use (EN 1307)



Acoustics:  
 $\alpha_w$ , E,  $\Delta L_w$ , 8B



CE system 3 (EN 14041)

Meets the requirements for Green Label Plus



# INGRID IN STRIPES™

GUNILLA LAGERHEM ULLBERG





*In preparation for our 125th anniversary in 2014, we have developed Ingrid in Stripes, inspired by the rag rugs which have been used on Swedish floors since the mid-19th Century. Used fabrics from clothes and household items were cut into long ribbons which were then woven into striped, multi-colored rugs. In the 1960s and 1970s, domestic arts and crafts enthusiasts started producing rag rugs with more distinct patterns and designs. Ingrid in Stripes lends a modern expression to traditional Swedish weaving, creating something which is equally at home in a city apartment or in a rural cottage.*

INGRID IN STRIPES  
Rugs 85x240 cm



Rug Ingrid Svensson



Rug Ingrid Larsson



Rug Ingrid Johansson



Rug Ingrid Andersson



Rug Ingrid Pettersson

PRODUCT TYPE: Woven rug in pure wool  
WEFT MATERIAL: 100% wool  
WARP MATERIAL: 100% linen  
SIZE: Custom made sizes, width 70–600 cm upon request. Or choose our suggested sizes, 85x240 cm, 160x240 cm.  
TOTAL HEIGHT: approx. 5 mm  
TOTAL WEIGHT: approx. 2200 g/m<sup>2</sup>



Wear classification:  
(EN 1307) Class 33  
Commercial Heavy



Luxury rating:  
(EN 1307) LC1



Acoustics:  
 $\alpha_w, E, \Delta L_w$  8B



Suitable for Castor chair  
only with additional backing:  
Occasional use (EN 1307)



Fire classification:  
(EN 13501-1) Cfl-s1



CE system 3 (EN 14041)

Meets the requirements for Green Label Plus

JOHN<sup>TM</sup>  
GUNILLA LAGERHEM ULLBERG

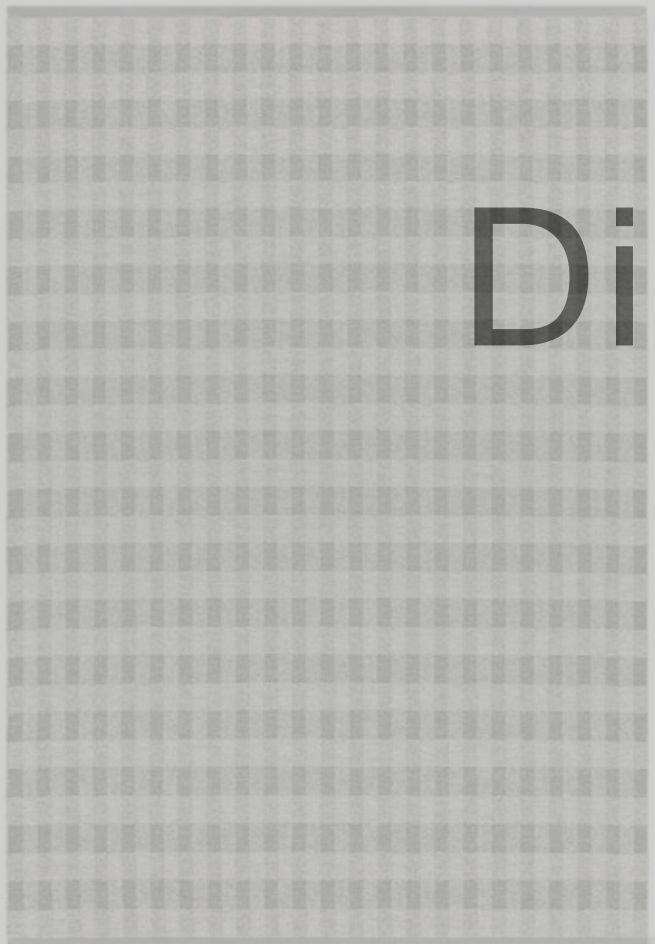
Discontinued





*John is woven in a blend of the finest wool and linen in a combination of bouclé yarn and wool yarn that form a pattern of diffuse squares. Gunilla Lagerhem Ullberg has balanced the different colors carefully, inspired by coat fabrics from the world of fashion. John comes in five different colors, including two with glittering additions in the form of Lurex yarn.*

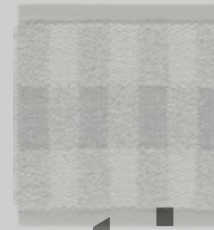
JOHN  
Rug 170x240 cm, Soft Grey 501



JOHN COLORS  
Samples 30x30 cm



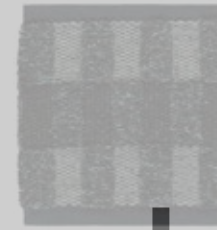
Lime 400



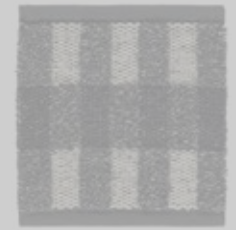
Soft Grey 501



Denim 200



Petrol 201



Asphalt 500

# Discontinued

PRODUCT TYPE: Woven bouclé rug in pure wool and linen with an effect of Lurex

WEFT MATERIAL: 60% wool, 40% linen

WARP MATERIAL: 100% linen

SIZE: Custom made sizes, width 70–600 cm upon request.

Or choose amongst our suggested sizes: 90x240 cm, 140x200 cm, 170x240 cm, 200x300 cm, 250x350 cm, 300x400 cm, 350x450 cm

TOTAL HEIGHT: approx. 10 mm

TOTAL WEIGHT: approx. 3520 g/m<sup>2</sup>



Wear classification:  
(EN 1307) Class 31  
Commercial Moderate



Fire classification:  
(EN 13501-1) Cl-s1

Meets the requirements for Green Label Plus

<sup>TM</sup>  
**LUCY**

GUNILLA LAGERHEM ULLBERG

A collection of fashion accessories is displayed on a dark, textured surface. In the upper left, a round tray holds a small teacup with a saucer, a matching handbag, and a small ring. In the lower left, a rectangular box is open, revealing a patterned fabric with a geometric, zig-zag design in shades of grey and gold. To the right of the box, a pair of light-colored, pointed-toe high-heeled shoes is visible. The word "Discontinued" is overlaid in large, bold, black letters across the center of the image.

**Discontinued**



*Lucy is a glittering woven chenille rug. It combines a hard-wearing chenille yarn of the finest wool with Lurex to create a glittering but elegant surface that suits many different types of setting. Gunilla Lagerhem took her inspiration from the fashion world, as can be seen in the sophisticated use of color.*

LUCY  
Rug 170x240 cm, Silver 5002

LUCY COLORS  
Samples 15x15 cm



Silver 5002



Brass 7001



Copper 7002

# Discontinued

PRODUCT TYPE: Woven chenille rug in pure wool and an effect of Lurex

WEFT MATERIAL: 95% wool, 5% Lurex

WARP MATERIAL: 100% linen

SIZE: Custom made sizes, width 70–600 cm upon request.

Or choose amongst our suggested sizes: 90x240 cm, 140x200 cm, 170x240 cm, 200x300 cm, 250x350 cm, 300x400 cm, 350x450 cm.

TOTAL HEIGHT: approx. 12 mm

TOTAL WEIGHT: approx. 3000 g/m<sup>2</sup>



Wear classification:  
(EN 1307) Class 31  
Commercial Moderate



Fire classification:  
(EN 13501-1) Cl-s1

Meets the requirements for Green Label Plus



# MAROCCO<sup>TM</sup>

GUNILLA LAGERHEM ULLBERG





*Marocco's pattern takes its inspiration from North Africa while the texture itself is firmly rooted in our woven bouclé rug family. Imagine the scent of spices and milling markets or a cup of mint tea in a Bedouin tent. The meeting between Scandinavian simplicity and oriental richness creates a sublime rug. Made from wool and linen, the five color combinations are inspired by spices: salt, pepper, aniseed, spearmint and ginger.*

**MAROCCO**  
Rug 170x240 cm, Spearmint 301



**MAROCCO COLORS**  
Samples 15x15 cm



Salt 801



Aniseed 501



Ginger 802



Spearmint 301



Pepper 201

PRODUCT TYPE: Woven bouclé rug in pure wool and linen

WEFT MATERIAL: 65% wool, 35% linen

WARP MATERIAL: 100% linen

SIZE: Custom made sizes, width 70–600 cm upon request.

Or choose amongst our suggested sizes: 90x240 cm, 140x200 cm, 170x240 cm, 200x300 cm, 250x350 cm, 300x400 cm, 350x450 cm.

TOTAL HEIGHT: approx. 8 mm

TOTAL WEIGHT: approx. 2500 g/m<sup>2</sup>



Wear classification:  
(EN 1307) Class 32  
Commercial General



Wear classification:  
(EN 1307) Class 23  
Domestic Heavy



Fire classification:  
(EN 13501-1) Cfl-s1

Meets the requirements for Green Label Plus



MUSE<sup>TM</sup>

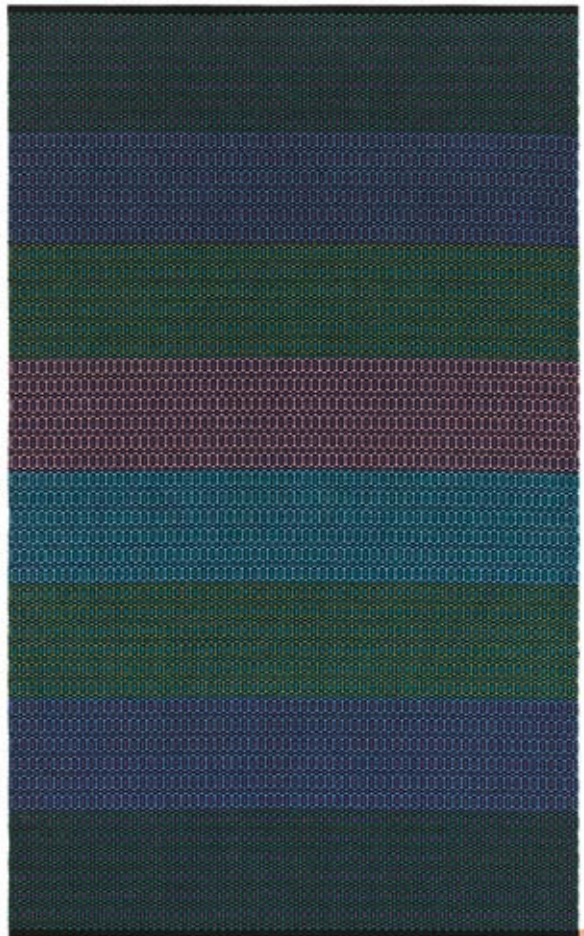
MAJA JOHANSSON STARANDER



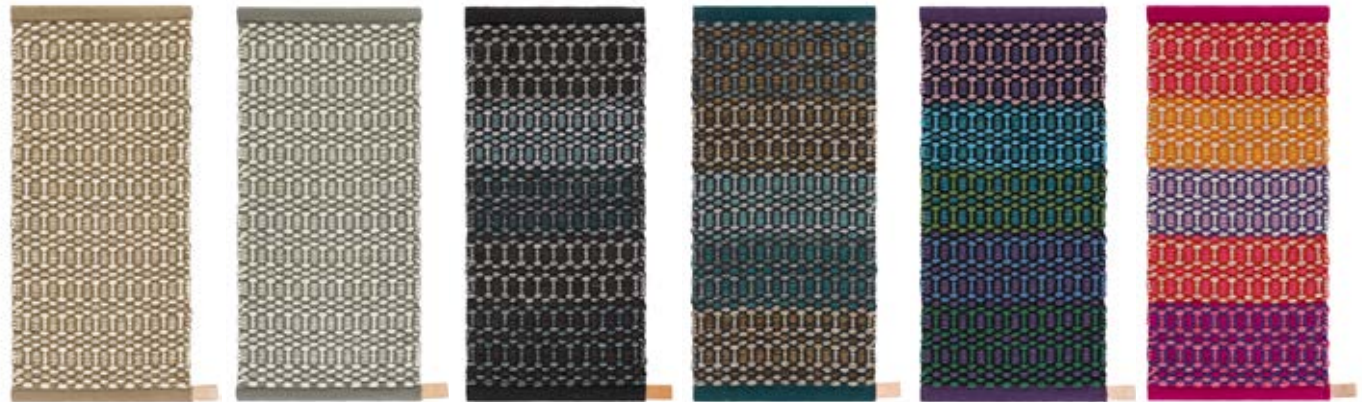


*In our well-stocked archives, we collect samples of the many thousands of designs that have been tested at Kasthall over the years. In 2015, designer Maja Johansson Starander found and reinterpreted a pattern saved there since the 1960s. The result was Muse, a modern retro-classic woven in 100 percent wool. The color story borrows inspiration from asphalt, Italian suit fabrics, nature romantic paintings and selvedge denim.*

MUSE  
Rug 165x245 cm, Botanica 200



MUSE COLORS  
Samples 30x60 cm



Savannah 800

Serenity 500

Denim 720

Amber 801

Botanica 200

Sunray 600

PRODUCT TYPE: Woven rug in pure wool

WEFT MATERIAL: 100% wool

WARP MATERIAL: 100% linen

SIZE: Custom made sizes, width 70–340 cm upon request.

Or choose amongst our suggested sizes: 85x245 cm, 135x195 cm, 165x245 cm, 195x290 cm, 250x335 cm, 300x390 cm, 340x450 cm.

TOTAL HEIGHT: approx. 10 mm

TOTAL WEIGHT: approx. 2700 g/m<sup>2</sup>



Wear classification:  
(EN 1307) Class 22  
Domestic general



Fire classification:  
(EN 13501-1) Cfl-s1

Meets the requirements for Green Label Plus



# OTHELLO™

MAJA JOHANSSON STARANDER





*When designer Maja Johansson Starander created the rug Othello, she mixed influences from industrial materials. Braided rope and surfaces of bags and shoes create a small but clear pattern image. The woven rug is made up of three different colored surfaces in equal sections, where one color is allowed to dominate each specific section. The rug is available in three variants, Mandarin Garden, Sound of Pink and Turquoise Delight. These are also available as a single-color option. The impression is eclectically playful and classically clean at the same time.*

**OTHELLO**  
Rug 200x300 cm, Sound of Pink 620



**OTHELLO COLORS**  
Samples 30x60 cm



Mandarin Garden 310



Turquoise Delight 720



Sound of Pink 620

**PRODUCT TYPE:** Woven rug in pure wool  
**WEFT MATERIAL:** 100% wool  
**WARP MATERIAL:** 100% linen  
**SIZE:** Custom made sizes, width 70–600 cm upon request.  
 Or choose amongst our suggested sizes: 90x240 cm, 140x200 cm, 170x240 cm, 200x300 cm, 250x350 cm, 300x400 cm, 350x450 cm.  
 Also suitable as an exclusive wall-to-wall carpet.

**TOTAL HEIGHT:** approx. 5 mm  
**TOTAL WEIGHT:** approx. 2310 g/m<sup>2</sup>



Wear classification:  
(EN 1307) Class 33  
Commercial Heavy



Acoustics:  
 $\alpha_w, E, \Delta L_w$  8B



Fire classification:  
(EN 13501-1) Cf-s1



CE system 3 (EN 14041)

Meets the requirements for Green Label Plus



<sup>TM</sup>  
**RITA**

GUNILLA LAGERHEM ULLBERG

Discontinued





*Rita is woven from two of Kasthall's unique yarns: new-generation chenille with two shades of best quality wool yarn, and a bouclé yarn spun from wool and linen, which gives the rug a subtle lustre. The weaving technique and the two different types of yarn combine to create a discreet striped pattern which gives the rug a subtle and elegant structure.*

RITA  
Rug 170x240 cm, Greige 882

RITA COLORS  
Samples 15x15 cm



Discontinued

PRODUCT TYPE: Woven chenille and bouclé rug in pure wool and linen

WEFT MATERIAL: 86% wool, 14% linen

WARP MATERIAL: 100% linen

SIZE: Custom made sizes, width 70–600 cm upon request.  
Or choose amongst our suggested sizes: 90x240 cm, 140x200 cm, 170x240 cm, 200x300 cm, 250x350 cm, 300x400 cm, 350x450 cm.

TOTAL HEIGHT: approx. 10 mm

TOTAL WEIGHT: approx. 3420 g/m<sup>2</sup>



Wear classification:  
(EN 1307) Class 32  
Commercial General



Fire classification:  
(EN 13501-1) Cfl-s1

Meets the requirements for Green Label Plus

TRIPPEL™

GUNILLA LAGERHEM ULLBERG

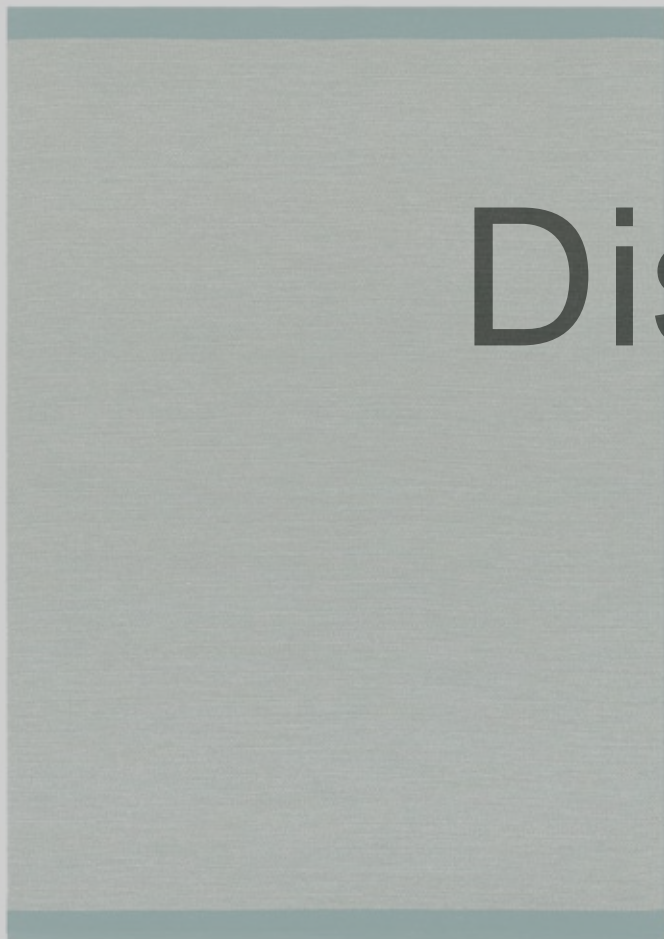
Discontinued

A modern interior scene featuring a green chair, a floor lamp, and a desk with a chair, all overlaid with a semi-transparent grey filter. The scene is dimly lit, with the floor lamp providing a soft glow. The green chair is in the foreground, and the desk with a chair is in the background. A light-colored rug is on the floor.



*This rug, woven in 100 percent wool, gets its character from three different yarn blends that form a marble effect on the subtle, finely patterned surface. A ten centimetre wide border in five different color combinations, including elegant neutrals and bolder shades, frames the rug. Trippel without edging also lends itself very well as a wall-to-wall carpet.*

TRIPPEL  
Rug 170x240 cm, Green Beige 380



TRIPPEL COLORS  
Samples 15x30 cm



Blue White 280

Green Beige 380

Orange Turquoise 720

Light Grey 580

Black Grey 550

# Discontinued

PRODUCT TYPE: Woven rug in pure wool

WEFT MATERIAL: 100% wool

WARP MATERIAL: 100% linen

TOTAL HEIGHT: approx. 5 mm

TOTAL WEIGHT: approx. 2200 g/m<sup>2</sup>

SIZE: Custom made sizes, width 70–600 cm upon request.

Or choose amongst our suggested sizes: 90x240 cm, 140x200 cm, 170x240 cm, 200x300 cm, 250x350 cm, 300x400 cm, 350x450 cm. Also suitable as an exclusive wall-to-wall carpet.



Wear classification:  
(EN 1307) Class 33  
Commercial Heavy



Luxury rating:  
(EN 1307) LC1



Fire classification:  
(EN 13501-1) Cf-s1



Suitable for Castor chair  
only with additional backing:  
Occasional use (EN 1307)



Acoustics:  
 $\alpha_w, E, \Delta L_w$  8B



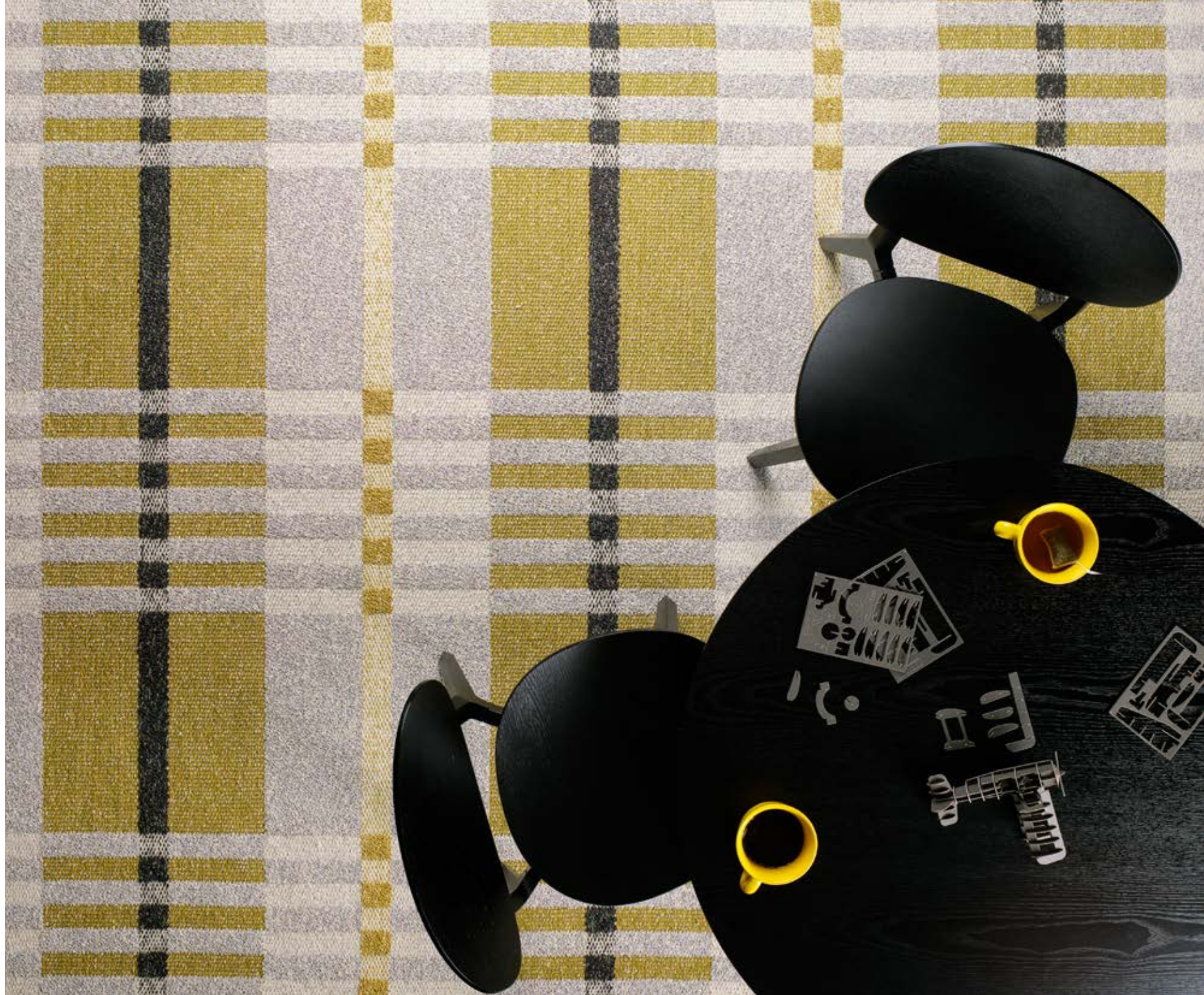
CE system 3 (EN 14041)

Meets the requirements for Green Label Plus



# TWEED™

GUNILLA LAGERHEM ULLBERG





*Tweed is a woven rug inspired by the checked coats of the same name. The combination of squares and stripes with two different woven structures – bouclé and wool yarn – gives the rug a tactile surface and a durable finish. Tweed is available in four color combinations inspired by the seasonal changes in fields and crops. The rug is sold in fixed sizes, tailored to the pattern of the rug and the size of the squares.*

**TWEED**  
Rug 210x320 cm, Potato Field 580



**TWEED COLORS**  
Samples 15x30 cm



Frosty Plains 540

Yellow Rye 450

Potato Field 580

First Snow 850

PRODUCT TYPE: Woven bouclé rug in pure wool and linen

WEFT MATERIAL: 60% wool, 40% linen

WARP MATERIAL: 100% linen

TOTAL HEIGHT: approx. 10 mm

TOTAL WEIGHT: approx. 3520 g/m<sup>2</sup>

SIZE: 210x320 cm, 290x400 cm, 370x480 cm, 450x560 cm, 530x640 cm



Wear classification:  
(EN 1307) Class 32  
Commercial General



Wear classification:  
(EN 1307) Class 23  
Domestic Heavy



Fire classification:  
(EN 13501-1) Cfl-s1

Meets the requirements for Green Label Plus

TUFTING  
PROVIDES A  
MULTITUDE  
OF POSSIBILITIES  
IN TERMS OF  
PATTERNS AND FORMS.  
WE CAN CREATE  
ANY MOTIF OR  
SHAPE THAT  
IS DESIRED OR  
IMAGINED.



**HAND TUFTED  
RUGS A-Z**

# ARCHIPELAGO<sup>TM</sup>

GUNILLA LAGERHEM ULLBERG



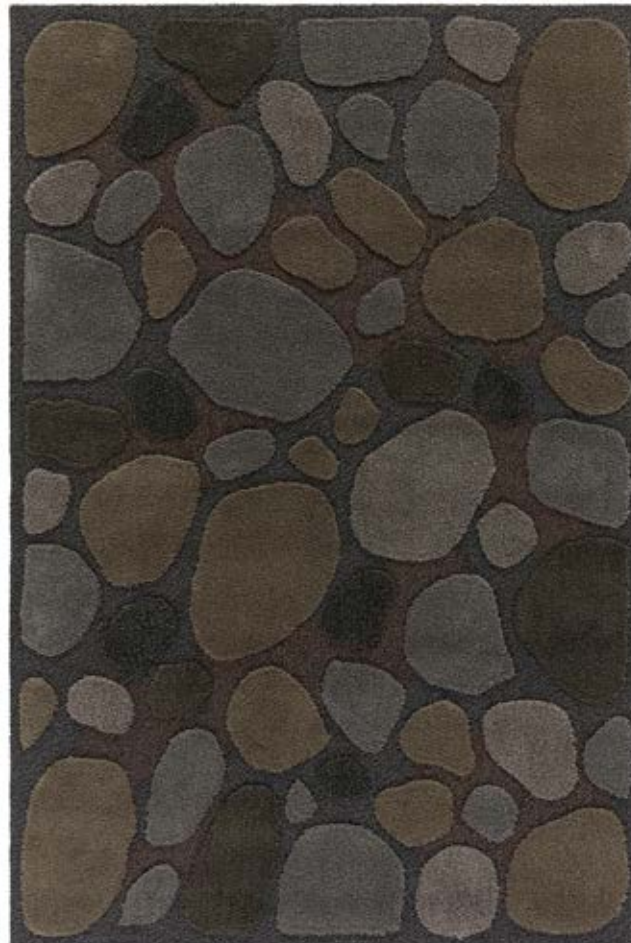


*Gunilla Lagerhem Ullberg has captured our beautiful seasons, and the ever-changing landscape of the Swedish archipelago. The rug is hand tufted in the finest wool and linen with sparkling touches of Lurex. Bright Archipelago March is reminiscent of a chilly spring day, when the air is clear and the sun shines in the sea and dark Archipelago November is inspired by a sombre November day when the autumn sun spreads its golden glow.*

**ARCHIPELAGO**  
Rug 200x300 cm, March 200



**ARCHIPELAGO**  
Rug 200x300 cm, November 700



**PRODUCT TYPE:** Hand tufted rug in pure wool and linen with an effect of Lurex

**PILE MATERIAL:** 54% wool, 44% linen, 2% Lurex

**BASE FABRIC:** Polyester

**BACKING MATERIAL:** Polypropylene and recycled yarn

**ADHESIVE:** Aqueous acrylic adhesive

**SIZE:** 170x240 cm, 200x300 cm, 250x350 cm, 300x400 cm, 350x450 cm. Other sizes upon request.

**PILE HEIGHT:** approx. 11/22 mm

**PILE WEIGHT:** approx. 2750 g/m<sup>2</sup>

**TOTAL HEIGHT:** approx. 26 mm

**TOTAL WEIGHT:** approx. 3550 g/m<sup>2</sup>



**Wear classification:**  
(EN 1307) Class 31  
Commercial Moderate



**Luxury rating:**  
(EN 1307) LC 5



**Fire classification:**  
(EN 13501-1) Efl-s1

# CLASSIC<sup>TM</sup>

KASTHALL DESIGN STUDIO





*Classic comes in three new patterns: Matrice Small, Matrice Large and Links. Classic is hand tufted, using a long-fibre wool yarn with a lovely lustre and strong visual expression. This is our most flexible rug, available in different patterns or border in bouclé. It can be tufted into any size and shape. Classic also opens for room specific flooring and may be ordered in special colors. The very high quality of the yarn and the tight stitches of the tuft make Classic suitable to both private homes and public spaces. Classic comes in nine new powdery colors and three new patterns.*

CLASSIC PATTERNS



Plain



Matrice Small



Matrice Large



Bouclé Border (7 cm wide)



Bouclé Frame (5 cm wide)



Damask



Links

PRODUCT TYPE: Hand tufted rug in high-quality wool  
 PILE MATERIAL: 100% wool  
 BASE FABRIC: Polyester  
 BACKING MATERIAL: Polypropylene and recycled yarn  
 ADHESIVE: Aqueous acrylic adhesive  
 SIZE: Any size and shape available.  
 Or choose amongst our suggested sizes:  
 140x200 cm, 170x240 cm, 200x300 cm, 250x350 cm, 300x400 cm, 350x450 cm, Round: Ø 240 cm. Also suitable as an exclusive wall-to-wall carpet.

PILE HEIGHT: Plain: approx. 13 mm, Damask: 10/12 mm  
 Links & Matrice: 10/13 mm  
 PILE WEIGHT: approx. 3000 g/m<sup>2</sup> (Damask 2150 g/m<sup>2</sup>)  
 TOTAL HEIGHT: approx. 17 mm (Damask 16 mm)  
 TOTAL WEIGHT: approx. 4000 g/m<sup>2</sup> (Damask 3050 g/m<sup>2</sup>)



Wear classification: (EN 1307) Class 33 Commercial Heavy



Luxury rating: (EN 1307) LC 5



Acoustics:  $\alpha_w$  D,  $\Delta L_w$  8A



Fire classification: (EN 13501-1) Cfl-s1



CE system 3 (EN 14041)

Meets the requirements for Green Label Plus

**CLASSIC**  
Rug Plain 170x240 cm, Rose Marble 611



**CLASSIC**  
Rug Matrice Small 200x300 cm, Soft Ceramic 807



**CLASSIC**  
Rug Links Ø 240 cm, Botanic Shade 303





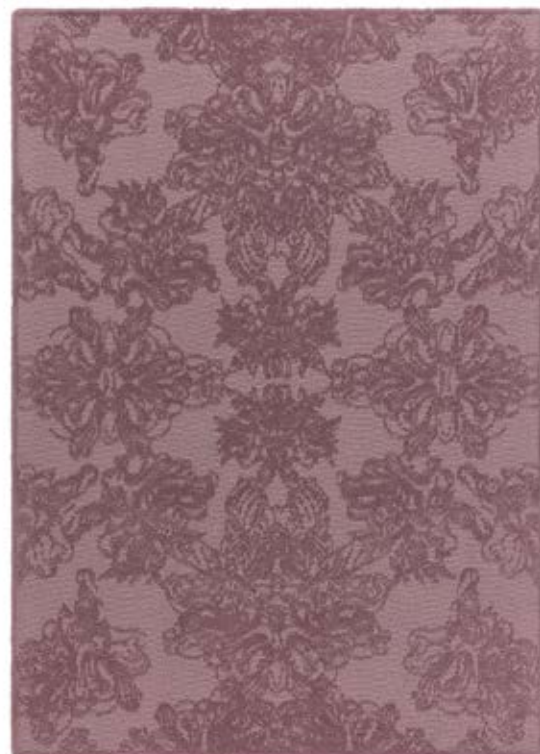
CLASSIC  
Rug Bouclé Frame, 5 cm, 170x240 cm, Granite 5005



CLASSIC  
Rug Bouclé Border, 7 cm, 170x240 cm, Cream 8001 (麩番色)



CLASSIC  
Rug Damask 170x240 cm, Shimmering Heather 6001 (麩番色)



CLASSIC Colors – Samples 15x15 cm



Cream 8001



Silver Grey 512



Granite 5005



Elephant Grey 513



Greige 511



Soft Ceramic 807



Fudge 805



Satin Clay 806



Dark Slate 514



Hortensia Blush 620



Rose Marble 611



Muted Teal 203



Antique Brass 706



Botanic Shade 303



Misty Taupe 515



Mink Brown 707





TM  
CORE

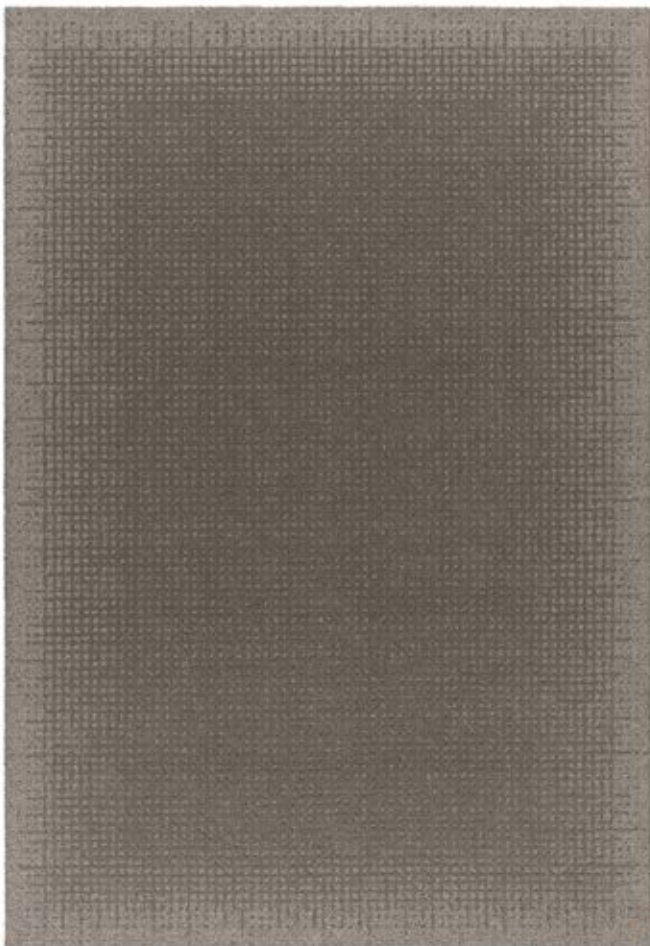
MAJA JOHANSSON STARANDER





*Core is a hand tufted rug in the finest worsted wool and linen. The wool gives it a velvety finish and the linen creates a sense of patina. To make Core, Kasthall's designer Maja Johansson Starander developed a grid pattern that gives the sensation of an impression rather than a clear pattern. Core is a poetic rug with a sober and elegant look and comes in eight different color combinations.*

**CORE**  
Rug 200x300 cm, Taupe Patina 803



**CORE COLORS**  
Samples 30x30 cm



Light Grey Patina 504



Taupe Patina 803



Seal Grey Patina 505



Marbel Grey Patina 501



Mocca Brown Patina 804



Emerald Green Patina 301



Peacock Patina 201



Midnight Black Patina 500

PRODUCT TYPE: Hand tufted rug in finest worsted wool and linen

PILE MATERIAL: 75% wool, 25% linen

BASE FABRIC: Polyester

BACKING MATERIAL: Polypropylene and recycled yarn

ADHESIVE: Aqueous acrylic adhesive

SIZE: 170x240 cm, 200x300 cm, 250x350 cm, 300x400 cm, 350x450 cm. Other sizes upon request.

PILE HEIGHT: loop pile 10 mm, cut pile 12 mm

PILE WEIGHT: approx. 2700 g/m<sup>2</sup>

TOTAL HEIGHT: approx. 15 mm

TOTAL WEIGHT: approx. 3400 g/m<sup>2</sup>



Wear classification:  
(EN 1307) Class 31  
Commercial Moderate



Luxury rating:  
(EN 1307) LC 5

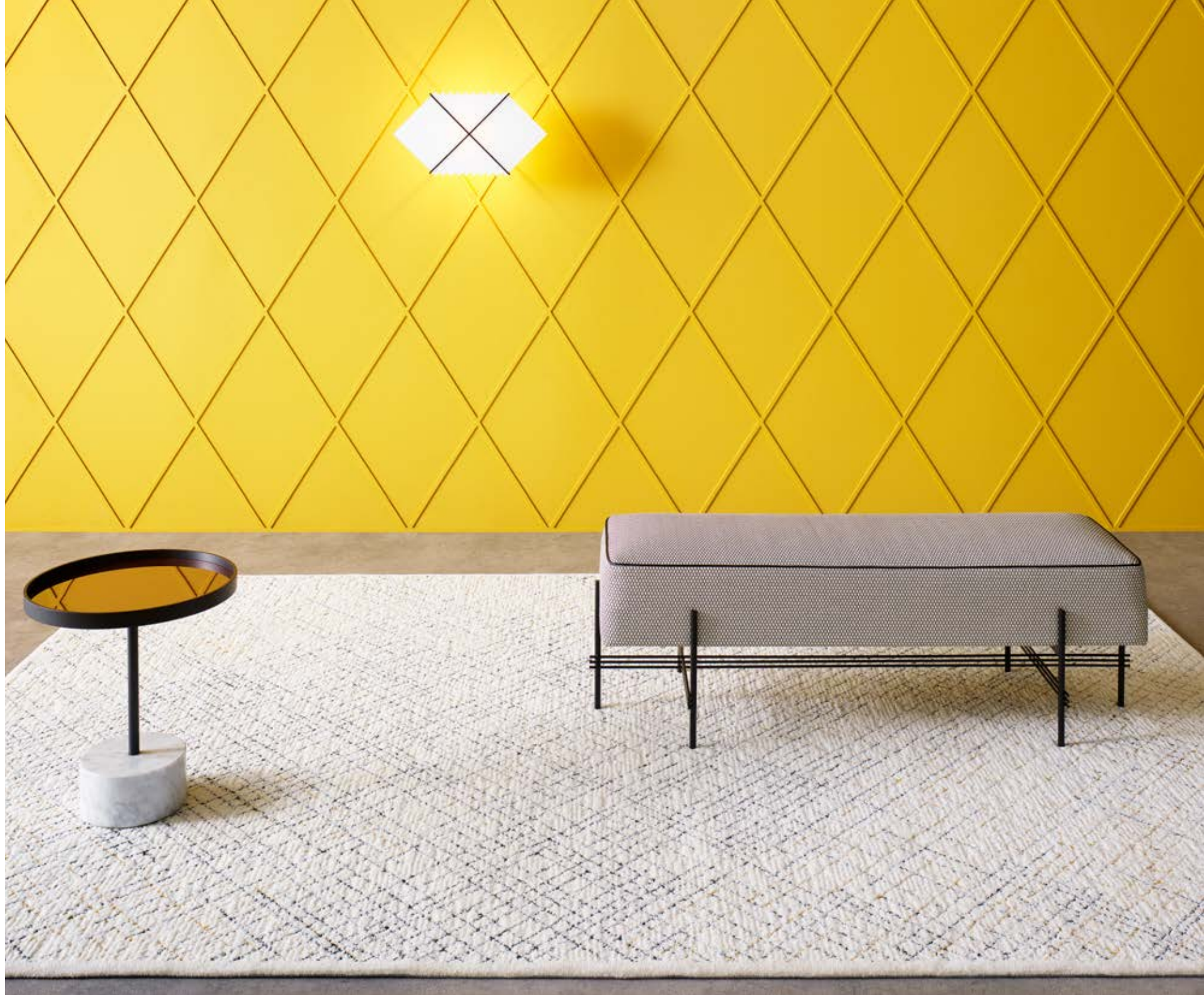


Fire classification:  
(EN 13501-1) Bfl-s1



# DIAMOND™

MAJA JOHANSSON STARANDER





*Diamond is hand tufted in wool and linen with a linear pattern embedded in a sophisticated structure of cut pile and bouclé pile. This amazing rug draws directly from exclusive embroidery and haute couture. In an aim to create changing visual expressions of fragility and clarity, like in a pool of water, the designer Maja Johansson Starander used a new technique to cover, and sometimes break up, the underlying pattern. With Diamond, Kasthall presents a rug with a strong poetic feel in an homage to fashion.*

**DIAMOND**

Rug 200x300 cm, White Diamond 500



**DIAMOND COLORS**

Samples 30x30 cm



PRODUCT TYPE: Hand tufted cut and bouclé rug  
in pure wool and linen

PILE MATERIAL: 60% wool, 40% linen

BASE FABRIC: Polyester

BACKING MATERIAL: Polypropylene and recycled yarn

ADHESIVE: Aqueous acrylic adhesive

SIZE: Any size and shape available. Or choose amongst our  
suggested sizes: 140x200 cm, 170x240 cm, 200x300 cm,  
250x350 cm, 300x400 cm, 350x450 cm. Round: Ø 240 cm.

PILE HEIGHT: approx. 11/15 mm

PILE WEIGHT: approx. 3000 g/m<sup>2</sup>

TOTAL HEIGHT: approx. 14/19 mm

TOTAL WEIGHT: approx. 4000 g/m<sup>2</sup>



Wear classification:  
(EN 14215) Class 22  
Domestic General



Luxury rating:  
(EN 14215) LC 5



Fire classification:  
(EN 13501-1) Bfl-s1

TM  
FIELD

KASTHALL DESIGN STUDIO

Discontinued





*Kasthall Design Studio's Field is constructed in a new tuft quality – LOOP, a bouclé in two different pile heights. This creates two dimensions of stripes, like floor planks, fields ploughed in rows, or shadows falling through venetian blinds. Letting the material and yarn be the focus of the rug gives it an honest and clean feeling of raw tweed and crafts. The five color combinations Paris Blue, Rouge, Almond, Porcelain Pink and Blonde are built on a formula of three strands in wool yarn. A raw, cut edge frames and ends the rug, which is available in a wide stripe (Medium) as well as a narrow stripe (Small).*

FIELD (Medium)  
Rug 200x300 cm, Paris Blue 200



FIELD COLORS (Small)  
Samples 30x30 cm



Blond 801      Almond 800      Paris Blue 200      Porcelain Pink 600      Rouge 100

FIELD COLORS (Medium)  
Samples 30x30 cm



Blond 801      Almond 800      Paris Blue 200      Porcelain Pink 600      Rouge 100

Discontinued

PRODUCT TYPE: Hand tufted bouclé rug in pure wool  
 PILE MATERIAL: 100% wool  
 BASE FABRIC: Polyester  
 BACKING MATERIAL: Polypropylene and recycled yarn  
 ADHESIVE: Aqueous acrylic adhesive  
 SIZE: Any size and shape available. Or choose amongst our suggested sizes: 170x250 cm, 200x300 cm, 250x355 cm, 300x390 cm, 350x465 cm. Round: Ø 250 cm.

PILE HEIGHT: approx. 14/10 mm  
 PILE WEIGHT: approx. 2800 g/m<sup>2</sup>  
 TOTAL HEIGHT: approx. 18 mm  
 TOTAL WEIGHT: approx. 3500 g/m<sup>2</sup>



Wear classification:  
(EN 1307) Class 32  
Commercial General



Wear classification:  
(EN 1307) Class 23  
Domestic Heavy



Luxury rating:  
(EN 1307) LC 5



Fire classification:  
(EN 13501-1) Cfl-s1



# FOGG™

GUNILLA LAGERHEM ULLBERG





*An elegant long pile rug that shimmers in a variety of shades.  
The character of the linen yarn and the many shades of color gives  
it a beautifully mottled appearance and attractive sheen.*

FOGG  
Rug 170x240 cm, Turquoise 320



FOGG COLORS  
Samples 15x15 cm



PRODUCT TYPE: Hand tufted rug in pure linen

PILE MATERIAL: 100% linen

BASE FABRIC: Polyester

BACKING MATERIAL: Polypropylene and recycled yarn

ADHESIVE: Aqueous acrylic adhesive

SIZE: Any size and shape available. Or choose amongst our  
suggested sizes: 140x200 cm, 170x240 cm, 200x300 cm,  
250x350 cm, 300x400 cm, 350x450 cm. Round: Ø 240 cm.

PILE HEIGHT: approx. 40 mm

PILE WEIGHT: approx. 3200 g/m<sup>2</sup>

TOTAL HEIGHT: approx. 44 mm

TOTAL WEIGHT: approx. 4100 g/m<sup>2</sup>



# FOGG HARLEQUIN™

GUNILLA LAGERHEM ULLBERG

*Fogg Harlequin is based on Fogg and comes in shades of suede and leather, inspired by the afghan coats and leather patchwork of the 1970's. The rug, designed by Gunilla Lagerhem Ullberg demonstrate the unlimited possibilities that the tufting method and Kasthall's atelier can offer to create unique patterns and color combinations.*

FOGG HARLEQUIN COGNAC  
Rug 170x240 cm



FOGG HARLEQUIN CREAM  
Rug 170x240 cm



PRODUCT TYPE: Hand tufted rug in pure linen  
PILE MATERIAL: 100% linen  
BASE FABRIC: Polyester  
BACKING MATERIAL: Polypropylene and recycled yarn  
ADHESIVE: Aqueous acrylic adhesive  
SIZE: Any size and shape available. Or choose amongst our suggested sizes: 140x200 cm, 170x240 cm, 200x300 cm, 250x350 cm, 300x400 cm, 350x450 cm. Round: Ø 240 cm  
PILE HEIGHT: approx. 40 mm  
PILE WEIGHT: approx. 3200 g/m<sup>2</sup>  
TOTAL HEIGHT: approx. 44 mm  
TOTAL WEIGHT: approx. 4100 g/m<sup>2</sup>



Acoustics:  
 $\alpha_{wD}, \Delta L_{w,8A}$



Luxury rating:  
(EN 14215) LC 5



WE ARE  
UNITED BY  
A PASSION  
FOR OUR TASK:  
TO CREATE  
UNIQUE RUGS  
FOR UNIQUE  
CUSTOMERS

# FREYJA™

MAJA JOHANSSON STARANDER





*Freyja is hand tufted in a new bouclé made from a chunky wool yarn which has been felted and twisted until it become curly. The tufted loops in different heights are left uncut to create an uneven robust surface with an intricate pattern. Freyja is a textile interpretation of moss and lichen, of stone, soil and mineral. In contrast to the softness of the felted yarn Freyja comes with an accent border in shiny hair yarn/linen. With its simplistic beauty Freyja brings to mind impressions of the serene landscape of Island, thus letting nature into our room.*

**FREYJA**  
Rug 170x240 cm, Green Gold 300



**FREYJA COLORS**  
Samples 30x30 cm



Mineral Grey 200



Green Gold 300



Dark Grape 700

**PRODUCT TYPE:** Hand tufted bouclé rug in pure wool with an accent board in linen

**PILE MATERIAL:** 99% wool, 1% linen

**BASE FABRIC:** Polyester

**BACKING MATERIAL:** Polypropylene and recycled yarn

**ADHESIVE:** Aqueous acrylic adhesive

**SIZE:** Any size and shape available. Or choose amongst our suggested sizes: 140x200 cm, 170x240 cm, 200x300 cm, 250x350 cm, 300x400 cm, 350x450 cm. Round: Ø 240 cm.

**PILE HEIGHT:** approx. 10/15 mm

**PILE WEIGHT:** approx. 2500 g/m<sup>2</sup>

**TOTAL HEIGHT:** approx. 13/18 mm

**TOTAL WEIGHT:** approx. 3300 g/m<sup>2</sup>



Wear classification:  
(EN 1307) Class 32  
Commercial General



Wear classification:  
(EN 1307) Class 23  
Domestic Heavy



Luxury rating:  
(EN 1307) LC 5



Fire classification:  
(EN 13501-1) Cf-s1



# GLIMMER™

PETRA LUNDBLAD





*Glimmer is a hand tufted rug with a tight, short pile of wool and a specially dyed linen yarn that gives the rug its shimmering pattern. The irregular shape of the rug with no right angles challenges the eye and creates tension – what seems to be a straight edge is really a convex line. The inspiration comes from make up and eye shadow, and like an eye-shadow palette, the glimmering surface changes depending on the light and how the yarn lies, which brings the rug to life when it is used. Glimmer comes in three elegant color combinations to suit a range of different settings.*

GLIMMER  
Rug 170x240 cm, Silver Dust 25



GLIMMER  
Rugs 170x240 cm, Shimmering Sand 88



GLIMMER  
Rugs 170x240 cm, Velvet Truffle 77



PRODUCT TYPE: Hand tufted rug in pure wool and linen  
PILE MATERIAL: 65% wool, 35% linen  
BASE FABRIC: Polyester  
BACKING MATERIAL: Polypropylene and recycled yarn  
ADHESIVE: Aqueous acrylic adhesive  
SIZE: 170x240 cm, 200x300 cm, 250x350 cm, 300x400 cm, 350x450 cm. Other sizes upon request.

PILE HEIGHT: approx. 13 mm  
PILE WEIGHT: approx. 3200 g/m<sup>2</sup>  
TOTAL HEIGHT: approx. 15 mm  
TOTAL WEIGHT: approx. 4200 g/m<sup>2</sup>



Luxury rating:  
(EN 14215) LC 5



Fire classification:  
(EN 13501-1) Cfl-s1

GRY™

GUNILLA LAGERHEM ULLBERG

Discontinued

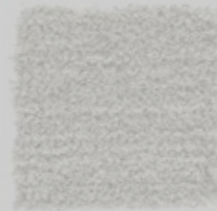
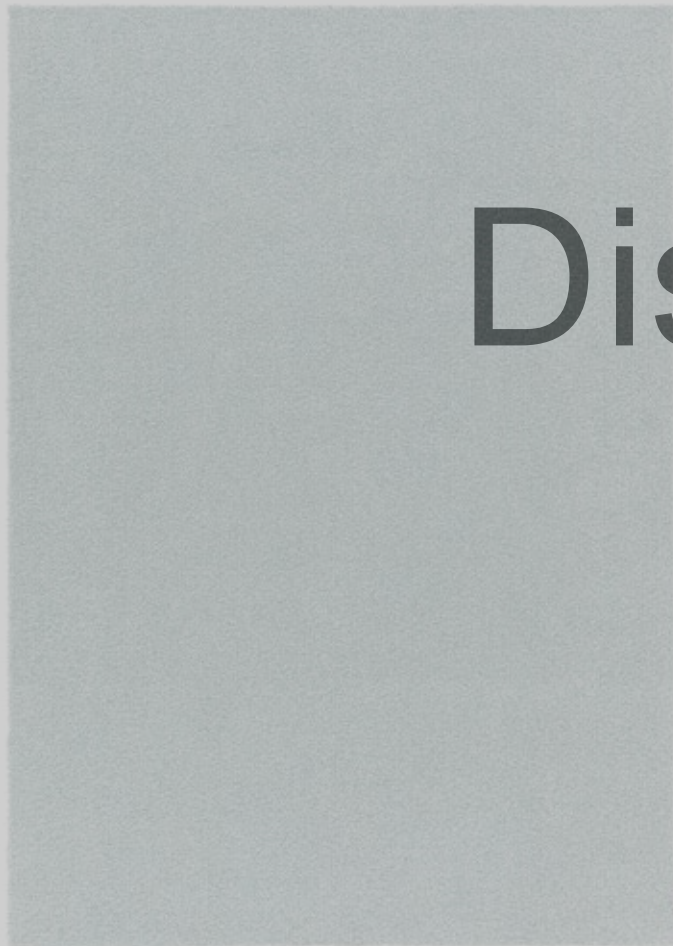




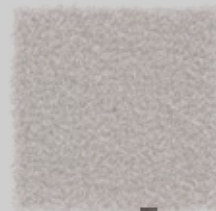
*Gry is a hand tufted rug in a bouclé made from wool and linen in a special technique where the loops are either cut or left intact. This renders Gry a soft, shimmering but sturdy surface. The wool/linen in different natural shades is what gives this rug its unique structure and lustre. In 2018 we emphasize the beauty of the natural materials by presenting Gry in the powdery colors Pale Turquoise and Rose Mist.*

GRY  
Rug 170x240 cm, Pale Turquoise 203

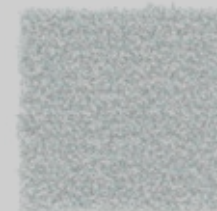
GRY COLORS  
Samples 15x15 cm



Pearl Grey 501



Rose Mist 610



Pale Turquoise 203



Indigo 201

# Discontinued

PRODUCT TYPE: Hand tufted rug in pure wool and linen  
 PILE MATERIAL: 55% wool, 45% linen  
 BASE FABRIC: Polyester  
 BACKING MATERIAL: Polypropylene and recycled yarn  
 ADHESIVE: Aqueous acrylic adhesive  
 SIZE: Any size and shape available. Or choose amongst our suggested sizes: 140x200 cm, 170x240 cm, 200x300 cm, 250x350 cm, 300x400 cm, 350x450 cm. Round: Ø 240 cm.

PILE HEIGHT: approx. 13 mm  
 PILE WEIGHT: approx. 2800 g/m<sup>2</sup>  
 TOTAL HEIGHT: approx. 15 mm  
 TOTAL WEIGHT: approx. 3600 g/m<sup>2</sup>



Wear classification:  
(EN 1307) Class 22  
Domestic General



Luxury rating:  
(EN 1307) LC 5



Fire classification:  
(EN 13501-1) Cfl-s1

INES<sup>TM</sup>

MAJA JOHANSSON STARANDER





*Tufted rug Ines, in a volume of coarser wool yarn and linen, with a contrasting surface in low bouclé, is the sister of Kasthall's iconic rug Moss. The design is timeless, elegant and eccentric and born from experiments with paper folding and collage techniques, where hard shapes and lines meet with volume, straight shapes that are 'messed up,' and messy surfaces which are deconstructed. Here, designer Maja Johansson Starander has shaped stripes with shadows and volume in the colors Moon, Ghost, Jungle and Sapphire.*

INES  
Rug 200x300 cm, Sapphire 220



INES COLORS  
Samples 15x15 cm



Ghost 880



Moon 550



Sapphire 220



Jungle 330

PRODUCT TYPE: Hand tufted rug in pure wool and linen  
 PILE MATERIAL: 75% wool, 25% linen/  
 bouclé in pure new wool  
 BASE FABRIC: Polyester  
 BACKING MATERIAL: Polypropylene and recycled yarn  
 ADHESIVE: Aqueous acrylic adhesive  
 SIZE: 170x247 cm, 200x300 cm, 250x350 cm,  
 300x400 cm, 350x455 cm

PILE HEIGHT: approx. 11/40 mm  
 PILE WEIGHT: approx. 3100 g/m<sup>2</sup>  
 TOTAL HEIGHT: approx. 44 mm  
 TOTAL WEIGHT: approx. 3950 g/m<sup>2</sup>



Wear classification:  
(EN 1307) Class 21  
Domestic Moderate



Luxury rating:  
(EN 1307) LC 5



Fire classification:  
(EN 13501-1) Ef1-s1

# KATJA<sup>TM</sup>

MAJA JOHANSSON STARANDER





*Katja is a rustic hand tufted wool rug with a pile cut in two different heights in an abstract organic pattern. Inspired by the Swedish fashion designer Katja of Sweden and her clothes in jersey, the designer Maja Johansson Starander has worked with an interpretation of textile as corpus. A specially developed wool yarn with lots of volume has been used in a new unique 3D tuft technique to form the curly, frizzy even waffled surface. The yarn has a deeper color on the inside which creates an interesting visual depth in the rug. Katja also's got a simplistic but well made border. This rug with its raw urban texture is presented in a both sensual and soft gesture. Like an exclusive piece of clothing fallen the floor.*

**KATJA**  
Rug 170x240 cm, Pale Violet Grey 610



**KATJA COLORS**  
Samples 15x15 cm



PRODUCT TYPE: Hand tufted rug in pure wool  
 PILE MATERIAL: 100% wool  
 BASE FABRIC: Polyester  
 BACKING MATERIAL: Polypropylene and recycled yarn  
 ADHESIVE: Aqueous acrylic adhesive  
 SIZE: Any size and shape available. Or choose amongst our suggested sizes: 140x200 cm, 170x240 cm, 200x300 cm, 250x350 cm, 300x400 cm, 350x450 cm. Round: Ø 240 cm.

PILE HEIGHT: approx. 15/35 mm  
 PILE WEIGHT: approx. 3700 g/m<sup>2</sup>  
 TOTAL HEIGHT: approx. 18/38 mm  
 TOTAL WEIGHT: approx. 4500 g/m<sup>2</sup>



Wear classification:  
(EN 14215) Class 21  
Domestic Moderate



Luxury rating:  
(EN 14215) LC 5



Fire classification:  
(EN 13501-1) Cfl-s1

<sup>TM</sup>  
**LAV**

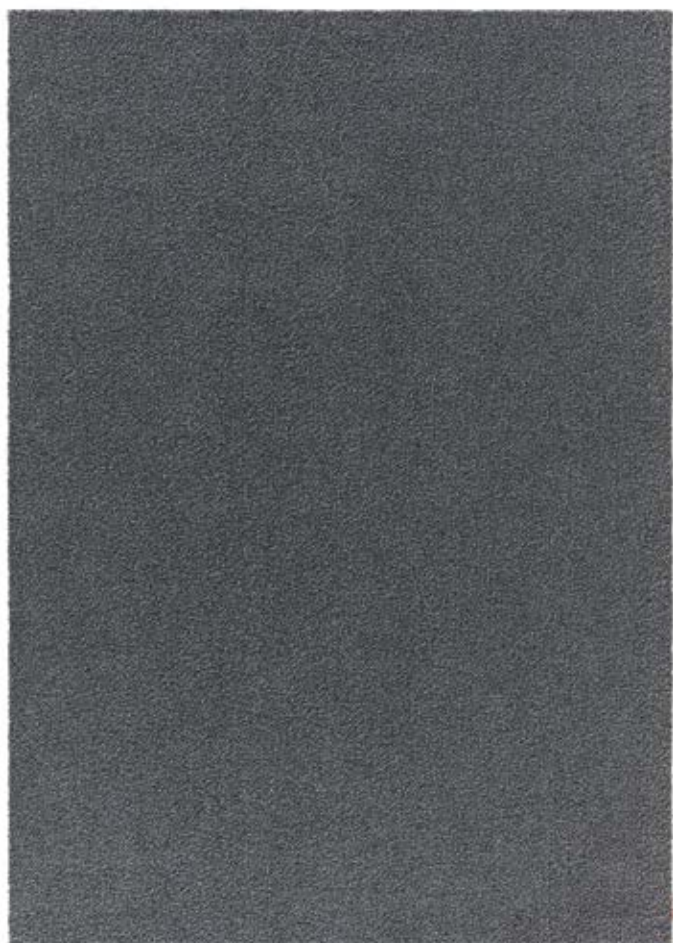
GUNILLA LAGERHEM ULLBERG





*Lav is a hand tufted bouclé rug in a wool and linen yarn which lends a shimmering lustre to the rug. The result is an elegant surface with excellent durability equally suited to private homes and public settings. Each tufted stitch creates a loop and as wool and linen support each other the result is a soft but strong surface. The name Lav refers to lichen on stones and for 2018 we present this rug in a new palette of seven sophisticated natural colors, in shades from dried sage to a hurricane blue.*

LAV  
Rug 170x240 cm, Hurricane Blue 201



LAV COLORS  
Samples 15x15 cm



White 805



Seashell 504



Sandstone 806



Amber Gold 400



Dried Sage 701



Tarred Wood 503



Hurricane Blue 201

PRODUCT TYPE: Hand tufted bouclé rug in pure wool and linen

PILE MATERIAL: 60% wool, 40% linen

BASE FABRIC: Polyester

BACKING MATERIAL: Polypropylene and recycled yarn

ADHESIVE: Aqueous acrylic adhesive

SIZE: Any size and shape available. Or choose amongst our suggested sizes: 140x200 cm, 170x240 cm, 200x300 cm, 250x350 cm, 300x400 cm, 350x450 cm. Round: Ø 240 cm.

PILE HEIGHT: approx. 11 mm

PILE WEIGHT: approx. 2700 g/m<sup>2</sup>

TOTAL HEIGHT: approx. 15 mm

TOTAL WEIGHT: approx. 3500 g/m<sup>2</sup>



Wear classification:  
(EN 1307) Class 32  
Commercial General



Luxury rating:  
(EN 1307) LC 5



Fire classification:  
(EN 13501-1) Cfl-s1

# MADISON™

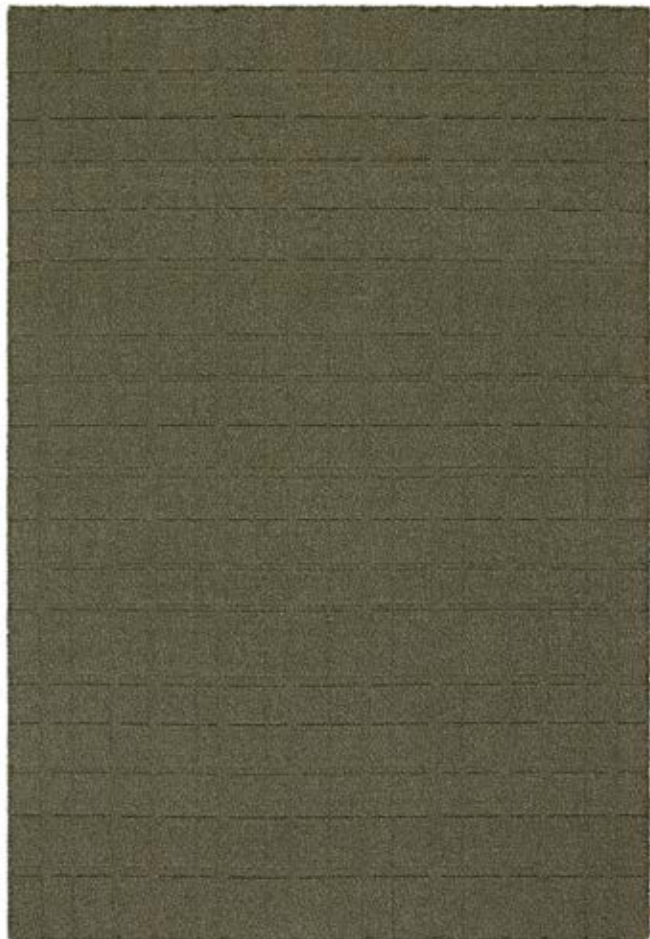
MAJA JOHANSSON STARANDER





*Maja Johansson Starander's Madison is constructed in a new tuft quality – LOOP, a bouclé in two different pile heights. The surface is made of three-threaded wool yarns to create a cohesive melange in an architectural grid pattern with both broad and delicate lines. The rug's quality gives it a sturdy and honest feeling and the five color combinations Bone, Midnight, Olive Twist, Sage and Paper lend the color mix a harmonious balance. The inspiration comes from urban environments and architecture, libraries, silence, footsteps, knitted pullovers and matelassé.*

**MADISON**  
Rug 200x300 cm, Olive Twist 300



**MADISON COLORS**  
Samples 30x30 cm



Bone 802

Paper 500

Sage 301

Olive Twist 300

Midnight 201

PRODUCT TYPE: Hand tufted bouclé rug in pure wool

PILE MATERIAL: 100% wool

BASE FABRIC: Polyester

BACKING MATERIAL: Polypropylene and recycled yarn

ADHESIVE: Aqueous acrylic adhesive

SIZE: 170x240 cm, 200x300 cm, 250x350 cm, 300x400 cm, 350x450 cm. Other sizes upon request.

PILE HEIGHT: approx. 14/10 mm

PILE WEIGHT: approx. 2800 g/m<sup>2</sup>

TOTAL HEIGHT: approx. 18 mm

TOTAL WEIGHT: approx. 3500 g/m<sup>2</sup>



Wear classification:  
(EN 1307) Class 32  
Commercial General



Wear classification:  
(EN 1307) Class 23  
Domestic Heavy



Luxury rating:  
(EN 1307) LC 5



Fire classification:  
(EN 13501-1) CF-s1



# MARK™

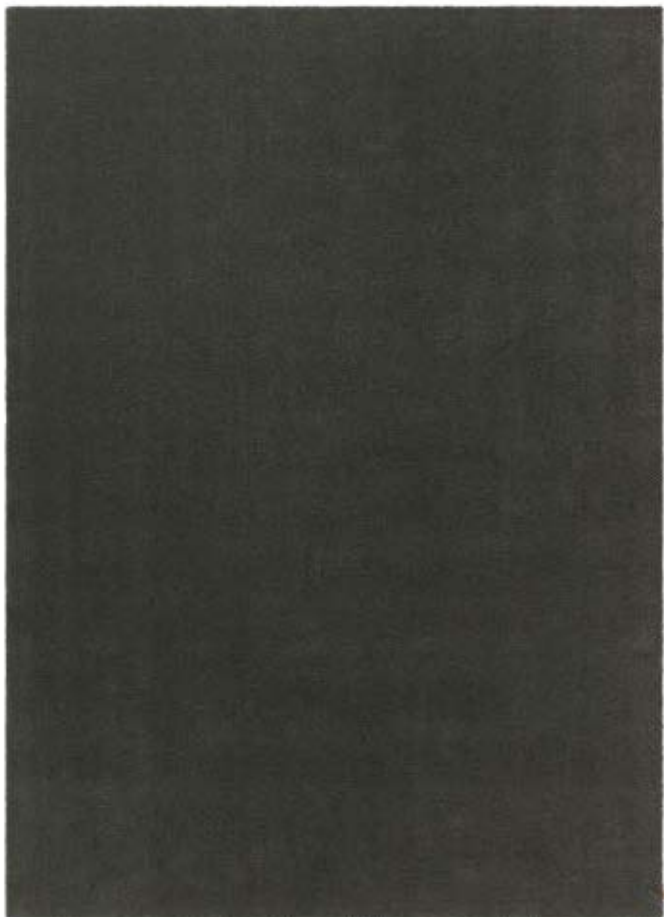
KASTHALL DESIGN STUDIO





*Mark is a hand tufted wool carpet available in 116 colors. The color scheme has been developed over the years and chosen from an artistic point of view. By using the same yarn as for our Häggå and Arkad families it is possible to produce this tufted rug in the same color as the woven Häggå and Arkad. Mark can be ordered in any size and for larger projects the Kasthall Design Studio offers custom made solutions. As an example we produced flooring by Claesson Koivisto Rune for Hotel Bergen Börs. Mark is also the name of the place where Kasthall's head office and factory is located, and hence part of our heritage.*

**MARK**  
Rug Plain, 200x300 cm



**MARK PATTERNS**  
Samples 30x30 cm



Plain 301



Border 302



Lines 303



Colour Block 304



Lines 303

**PRODUCT TYPE:** Hand tufted rug in pure wool  
**PILE MATERIAL:** 100% wool  
**BASE FABRIC:** Polyester  
**BACKING MATERIAL:** Polypropylene and recycled yarn  
**ADHESIVE:** Aqueous acrylic adhesive  
**SIZE:** Any size and shape available. Or choose amongst our suggested sizes: 140x200 cm, 170x240 cm, 200x300 cm, 250x350 cm, 300x400 cm, 350x450 cm. Round: Ø 240 cm.  
 Price of customized design upon request.

**PILE HEIGHT:** approx. 13 mm  
**PILE WEIGHT:** approx. 2700 g/m<sup>2</sup>  
**TOTAL HEIGHT:** approx. 17 mm  
**TOTAL WEIGHT:** approx. 3600 g/m<sup>2</sup>



Wear classification:  
(EN 1307) Class 32  
Commercial General



Wear classification:  
(EN 1307) Class 23  
Domestic Heavy



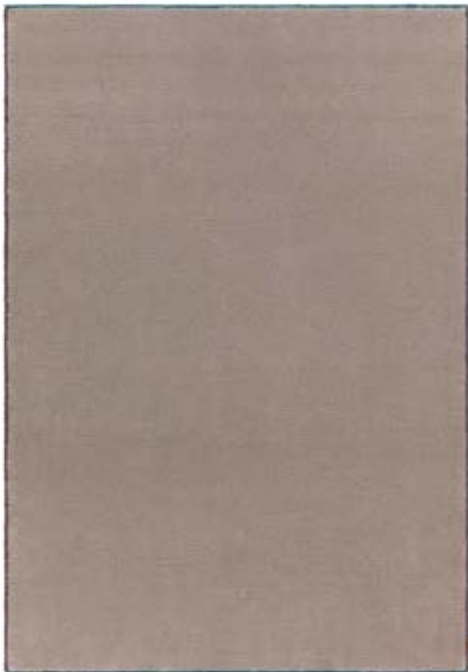
Luxury rating:  
(EN 1307) LC 5



Fire classification:  
(EN 13501-1) Cf1-s1

*Mark is part of our web design tool Kasthall Rug Designer.*

**MARK**  
Rug Edgar, 200x300 cm



**MARK**  
Rug Aston, 200x300 cm



**MARK**  
Rug Berta, 200x300 cm



**MARK**  
Rug Sarah, 200x300 cm







White 8005



Light Beige 8006



Natural Beige 8008



Warm Beige 8003



Grey Beige 8002



Sand 8007



Satin 8004



Silk Grey 8010



Pale Oat 8011



Greige 8012



Taupe 8013



Mud Beige 8001



Pale Brown 8014



Dark Chocolate 7002



Dark Grey Brown 7001



Passion Fruit 7011



Raisin 7012



Espresso 7015



Brown 7009



Golden Brown 7010



Light Chocolate 7003



Hazelnut 7013



Nougat 8009



Cognac 7014



Brown Green 3014



Pastel Lime 4008



Autumn Yellow 4014



Yellow Green 3017



Olive Green 3012



Lime Green 3031



Light Green Yellow 3008



Summer Green 3015



Grass Green 3007



Moss Green 3016



Dark Umbra 3013



Khaki Green 3030



Dark Forest Green 3029



Bright Green 3005



Sage Green 3027



Green Grey 3018



Pastel Green 3011



Dark Green Grey 3004



Jade Green 3003



Green Petrol 3001



Dark Emerald 3028





Crystal Grey 5014    Pastel Blue 2011    Light Blue Grey 2016    Light Blue 2008    Cool Blue 2006    Blue Purple 2015    Blue 2005    Bright Blue 2003    Dark Marine 2001



Indigo 2002    Moonlight Blue 2020    Jeans Blue 2018    Denim Blue 2019    Steel Blue 2012    Antique Blue 2022    Ocean Blue 2023    Blue Petrol 3026    Turquoise 3021



Menthol 3025    Lagoon Blue 2017    Light Turquoise 2014    Sunny Yellow 4011    Yellow 4010    Golden Ochre 4013    Carrot 4001    Golden Orange 1006    Dark Orange 1007



Coral Red 1004    Red 1003    Terracotta 7006    Rust 7005    Wine Red 1001    Dark Cerise 1002    Royal Red 1009    Rose Red 6101    Happy Pink 6102



Antique Pink 6105    Pale Rose 6107    Mallow Pink 6103    Dusty Pink 6111    Rouge Pink 6113    Cyclamen 6112    Magenta 6109    Grape Purple 6208    Maroon 6206





Purple Grey 6207

Antique Purple 6209

Heather 6211

Light Purple Grey 6204

Soft Pink 6114

Purple 6203

Bright Purple 6202

Deep Purple 6201

Lilac 6210



Pearl Grey 5013

Beige Grey 5012

Light Natural Grey 5006

Moon Grey 5015

Silver Grey 5004

Ice Grey 5011

Grey Blue 2013

Stone Grey 5010

Natural Grey 5005



Cool Grey 5003

Concrete 5016

Seal Grey 5017

Granite Grey 5002

Thunder Grey 5008

Cool Black 5009

Natural Black 5007

Black 5001





*Mark Sarah*



Mark Edgar







MONROE™

GUNILLA LAGERHEM ULLBERG

Discontinued





*A sparkling bouclé rug with a wonderful feeling of luxury. The design is inspired by starry skies, frosty grounds, and shimmering seas.*

MONROE  
Rug 170x240 cm, Graphite Grey 500



MONROE COLORS  
Samples 15x15 cm



# Discontinued

PRODUCT TYPE: Hand tufted bouclé rug in pure wool and linen, with polyester and Lurex

PILE MATERIAL: 65% wool, 20% polyester, 14% linen, 1% Lurex

BASE FABRIC: Polyester

BACKING MATERIAL: Polypropylene and recycled yarn

ADHESIVE: Aqueous acrylic adhesive

SIZE: Any size and shape available. Or choose amongst our suggested sizes: 140x200 cm, 170x240 cm, 200x300 cm, 250x350 cm, 300x400 cm, 350x450 cm. Round: Ø 240 cm.

PILE HEIGHT: approx. 11 mm

PILE WEIGHT: approx. 3000 g/m<sup>2</sup>

TOTAL HEIGHT: approx. 15 mm

TOTAL WEIGHT: approx. 3900 g/m<sup>2</sup>



Wear classification:  
(EN 14215) Class 21  
Domestic Moderate



Wear classification:  
(EN 1307) Class 31  
Commercial Moderate



Luxury rating:  
(EN 14215) LC 5

# MOSS™

GUNILLA LAGERHEM ULLBERG





*The hand tufted rug Moss is, with its mix of long, slightly rough linen threads and shorter threads of soft wool, a unique visual and tactile treat. Gunilla Lagerhem Ullberg created Moss from her interest in color, paired with a great knowledge of materials, textile history and trend. Before long this contemporary interpretation of the traditional Swedish rya rug brought the long-piled rug back into fashion. Moss is, and will continue to be, a favourite for the private home. Moss comes in nine sophisticated color combinations.*

**MOSS**  
Rug 170x240 cm, Silver Grey 300



**MOSS COLORS**  
Samples 15x15 cm



**PRODUCT TYPE:** Hand tufted rug in pure wool and linen

**PILE MATERIAL:** 70% wool, 30% linen

**BASE FABRIC:** Polyester

**BACKING MATERIAL:** Polypropylene and recycled yarn

**ADHESIVE:** Aqueous acrylic adhesive

**SIZE:** Any size and shape available. Or choose amongst our suggested sizes: 140x200 cm, 170x240 cm, 200x300 cm, 250x350 cm, 300x400 cm, 350x450 cm. Round: Ø240 cm.

**PILE HEIGHT:** approx. 40 mm

**PILE WEIGHT:** approx. 3500 g/m<sup>2</sup>

**TOTAL HEIGHT:** approx. 44 mm

**TOTAL WEIGHT:** approx. 4400 g/m<sup>2</sup>



# PEBBLE™

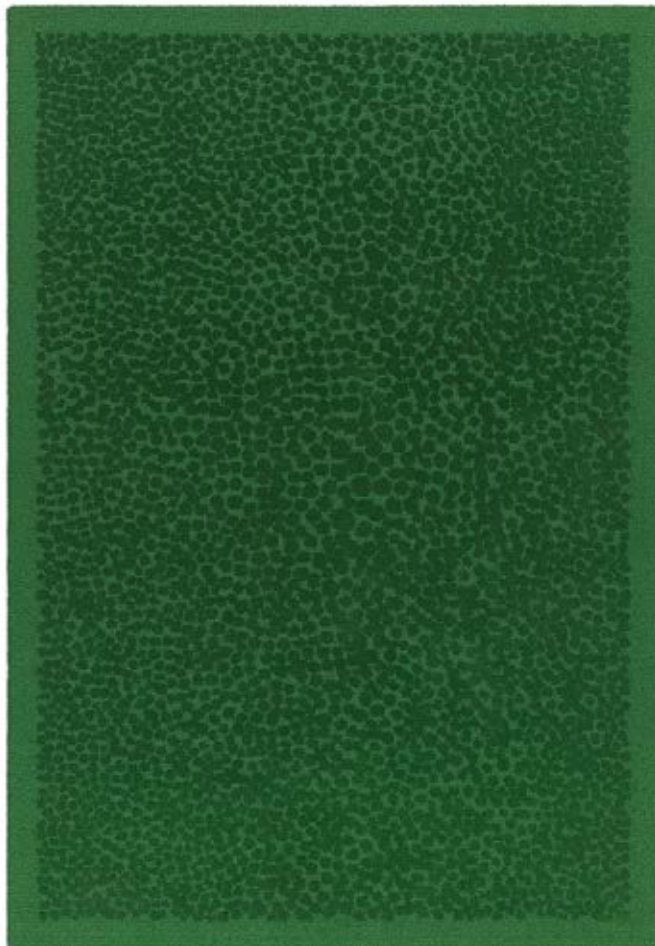
MAJA JOHANSSON STARANDER





*When creating Pebble, a hand tufted rug in the finest worsted wool and linen, Kasthall's designer Maja Johansson Starander was inspired by precious materials such as stone, glass and velvet. The linen in the rug gives it a weathered feel, and the 3D effect in the design makes it feel both exclusive and rich in character. With its subdued elegance Pebble, available in eight colors, commands any room.*

**PEBBLE**  
Rug 200x300 cm, Emerald Green Patina 301



**PEBBLE COLORS**  
Samples 30x30 cm



Light Grey Patina 504



Taupe Patina 803



Seal Grey Patina 505



Marbel Grey Patina 501



Emerald Green Patina 301



Peacock Patina 201



Mocca Brown Patina 804



Midnight Black Patina 500

**PRODUCT TYPE:** Hand tufted rug in finest worsted wool and linen

**PILE MATERIAL:** 75% wool, 25% linen

**BASE FABRIC:** Polyester

**BACKING MATERIAL:** Polypropylene and recycled yarn

**ADHESIVE:** Aqueous acrylic adhesive

**SIZE:** 170x240 cm, 200x300 cm, 250x350 cm, 300x400 cm, 350x450 cm. Other sizes upon request.

**PILE HEIGHT:** approx. 10/12 mm

**PILE WEIGHT:** approx. 2700 g/m<sup>2</sup>

**TOTAL HEIGHT:** approx. 15 mm

**TOTAL WEIGHT:** approx. 3400 g/m<sup>2</sup>



Wear classification:  
(EN 1307) Class 31  
Commercial Moderate



Luxury rating:  
(EN 1307) LC 5



Fire classification:  
(EN 13501-1) Bfl-s1

TM  
**RAY**

GUNILLA LAGERHEM ULLBERG





*This long-pile hand tufted rug has a soft, inviting pile, with a harlequin-style check pattern and a hand-drawn look. It is inspired by the hand-knotted rugs of nomadic people. The mix of wool and linen in different shades produces a surface with a beautiful sheen and marbled appearance. Ray was designed in 2005 by Gunilla Lagerhem Ullberg. The rug is available as wall-to-wall for areas that is suitable for this quality.*

**RAY**  
Rug 170x240 cm, White/Black 01



**RAY COLORS**  
Samples 30x30 cm



White/Black 01



Beige/White 04



Blue/White 05



Black/Beige 02



Brown/Beige 06



Red/Beige 03

PRODUCT TYPE: Hand tufted rug in pure wool and linen  
PILE MATERIAL: 50% wool, 50% linen  
BASE FABRIC: Polyester  
BACKING MATERIAL: Polypropylene and recycled yarn  
ADHESIVE: Aqueous acrylic adhesive  
SIZE: 170x240 cm, 200x300 cm, 250x350 cm, 300x400 cm,  
350x450 cm. Other sizes upon request.

PILE HEIGHT: approx. 22 mm  
PILE WEIGHT: approx. 2800 g/m<sup>2</sup>  
TOTAL HEIGHT: approx. 26 mm  
TOTAL WEIGHT: approx. 3700 g/m<sup>2</sup>



Wear classification:  
(EN 1307) Class 32  
Commercial General



Wear classification:  
(EN 1307) Class 23  
Domestic Heavy



Luxury rating:  
(EN 1307) LC 5

# STUBB™

GUNILLA LAGERHEM ULLBERG





*Hand tufted Stubb is a thick and luxurious rug. Its tight, soft, melange surface has strong visual and tactile qualities. The absence of ornament and the yarn in carefully selected wool and linen lends it a unique elegance. For this rug the designer Gunilla Lagerhem Ullberg was inspired by water color paintings, ripe oat fields, rich soil and washed out denim to a poetic interpretation no less fascinating today as when created. Stubb is very becoming as a small or large rug in spaces suitable for the quality.*

**STUBB**

Rug 170x240 cm, Turquoise Silver 304



**STUBB COLORS**

Samples 15x15 cm



PRODUCT TYPE: Hand tufted rug in pure wool and linen  
 PILE MATERIAL: 50% wool, 50% linen  
 BASE FABRIC: Polyester  
 BACKING MATERIAL: Polypropylene and recycled yarn  
 ADHESIVE: Aqueous acrylic adhesive  
 SIZE: Any size and shape available. Or choose amongst our suggested sizes: 140x200 cm, 170x240 cm, 200x300 cm, 250x350 cm, 300x400 cm, 350x450 cm. Round: Ø 240 cm.

PILE HEIGHT: approx. 22 mm  
 PILE WEIGHT: approx. 2800 g/m<sup>2</sup>  
 TOTAL HEIGHT: approx. 26 mm  
 TOTAL WEIGHT: approx. 3700 g/m<sup>2</sup>



Wear classification:  
(EN 1307) Class 32  
Commercial General



Wear classification:  
(EN 14215) Class 23  
Domestic Heavy



Luxury rating:  
(EN 14215) LC 5

TM  
**TEKLA**

GUNILLA LAGERHEM ULLBERG





*Hand tufted rug Tekla in felted and hand-dyed wool and linen, is a much-loved classic and a staple in the Kasthall range. It is developed with a sophisticated range of colors that add depth and texture to the environment that the rug adorns.*

**TEKLA**  
Rug 170x240 cm, Pineapple Swirl 400



**TEKLA COLORS**  
Samples 15x15 cm



**PRODUCT TYPE:** Hand tufted rug in pure wool and linen  
**PILE MATERIAL:** 75% wool, 25% linen  
**BASE FABRIC:** Polyester  
**BACKING MATERIAL:** Polypropylene and recycled yarn  
**ADHESIVE:** Aqueous acrylic adhesive  
**SIZE:** Any size and shape available. Or choose amongst our suggested sizes: 140x200 cm, 170x240 cm, 200x300 cm, 250x350 cm, 300x400 cm, 350x450 cm. Round: Ø 240 cm.

**PILE HEIGHT:** approx. 40 mm  
**PILE WEIGHT:** approx. 3600 g/m<sup>2</sup>  
**TOTAL HEIGHT:** approx. 44 mm  
**TOTAL WEIGHT:** approx. 4500 g/m<sup>2</sup>



# TILES™

CLAESSON KOIVISTO RUNE





*Tiles is a collection of hand tufted rugs in pure wool designed by Claesson Koivisto Rune. The inspiration comes – just as the name implies – from the different shapes and dimensions of ceramic tiles. Combined in a perfectly balanced pattern, elegantly framed by a thin outer line, Tiles really is Scandinavian simplicity at its best – a discreet yet sophisticated rug that will add subtle elegance to any setting. The collection has been designed as a system where three different patterns and seven colors can be freely combined in any size.*

**TILES COLORS**

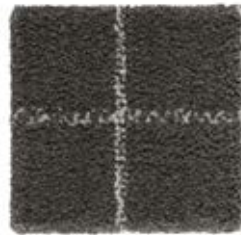
Samples 15x15 cm



Off-White 500



Sand 800



Grey 501



Brown 700



Navy Blue 200



Graphite Grey 550



Green 370

PRODUCT TYPE: Hand tufted rug in pure wool  
 PILE MATERIAL: 100% wool  
 BASE FABRIC: Polyester  
 BACKING MATERIAL: Polypropylene and recycled yarn  
 ADHESIVE: Aqueous acrylic adhesive  
 SIZE: 170x240 cm, 200x300 cm, 300x400 cm, 250x350 cm, 350x450 cm. Other sizes upon request.  
 PILE HEIGHT: approx. 13 mm  
 PILE WEIGHT: approx. 3000 g/m<sup>2</sup>  
 TOTAL HEIGHT: approx. 17 mm  
 TOTAL WEIGHT: approx. 4000 g/m<sup>2</sup>



Wear classification:  
(EN 1307) Class 33  
Commercial Heavy



Luxury rating:  
(EN 1307) LC 5



Acoustics:  
 $\alpha_w, D, \Delta L_w, 8A$



Fire classification:  
(EN 13501-1) Cf-s1

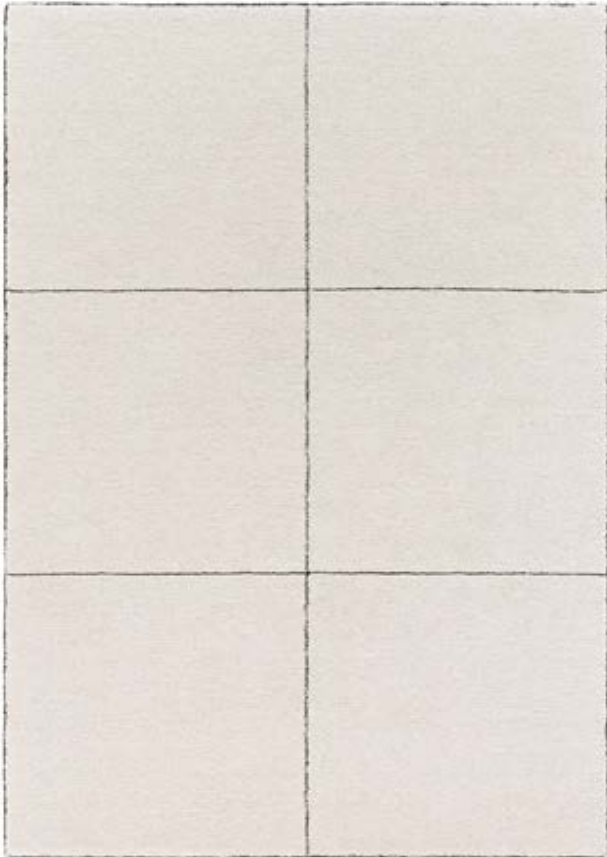


CE system 3  
(EN 14041)

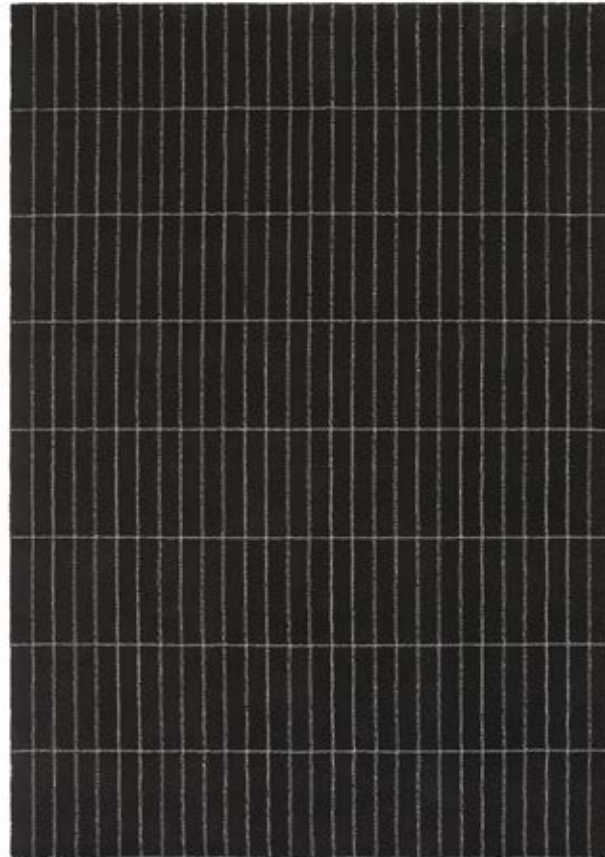
Meets the requirements for Green Label Plus

*The collection has been designed as a system where three different patterns and seven colors can be freely combined in any size.*

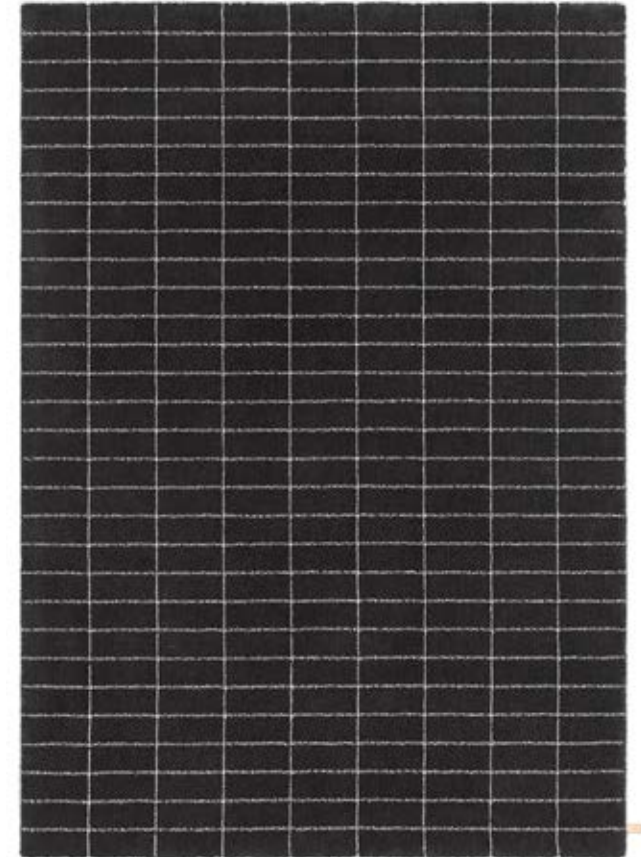
**TILES SLAB**  
Rug 200x300 cm, Off-White 500



**TILES BLOCK**  
Rug 200x300 cm, Graphite Grey 550



**TILES BRICK**  
Rug 200x300 cm, Graphite Grey 550





## THE NATURAL CHARACTERISTICS OF WOOL

Wool is a natural, renewable fibre that is grown continuously all year round. Under the right conditions wool is totally recyclable. Once a rug has reached the end of its life the wool can be returned to the soil and composted. Kasthall uses wool that originates mainly from New Zealand. Wool from New Zealand has a unique whiteness, which is ideal for producing light and sophisticated fashionable shades. It also has the ideal properties for dye absorption.

The wool yarn that Kasthall uses is relatively thick and has coarse fibres that make our rugs hard-wearing and durable. Wool has a natural fat coating that makes it dirt repellent. This combination of factors means that your Kasthall rug can be walked on, played on and lived on for many years.

Because wool does not burn like other fibres, wool rugs are ideal for locations with special fire requirements and do not need to be treated with flame retardants. Another advantage of wool is its low risk of triggering allergies, since it traps dust and dirt particles.



# VELVET™

GUNILLA LAGERHEM ULLBERG / MAJA JOHANSSON STARANDER





*Velvet is for anyone looking for that little something extra. The rug is hand-tufted in worsted wool – an exclusive wool yarn often used in men’s suits for its special lustre and suppleness. Used in a rug, it gives the floor a luxurious, soft velvety surface – a surface that retains its appearance over time. The elegant color scale, inspired by all that the good life has to offer, encompasses subtle, shimmering tones perfect for any number of interiors. Velvet is available in shimmering tones and five patterns/versions; Pearl, Plain, Piazza, Stella and Strada.*

VELVET COLORS Samples 15x15 cm



PRODUCT TYPE: Hand tufted rug in finest worsted wool

PILE MATERIAL: 100% wool

BASE FABRIC: Polyester

BACKING MATERIAL: Polypropylene and recycled yarn

ADHESIVE: Aqueous acrylic adhesive

SIZE AND SHAPE VELVET PLAIN:

Any size and shape available. Or choose amongst our suggested sizes: 140x200 cm, 170x240 cm, 200x300 cm, 250x350 cm, 300x400 cm, 350x450 cm, Ø240 cm.

PILE HEIGHT: approx. 15 mm (Pearl, Piazza, Stella & Strada: 11/13 mm)

PILE WEIGHT: approx. 3500 g/m<sup>2</sup> (Pearl, Piazza, Stella & Strada: 3100 g/m<sup>2</sup>)

TOTAL HEIGHT: approx. 19 mm (Pearl, Piazza, Stella & Strada: 16 mm)

TOTAL WEIGHT: approx. 4250 g/m<sup>2</sup> (Pearl, Piazza, Stella & Strada: 3850 g/m<sup>2</sup>)

SIZE AND SHAPE VELVET PEARL, PIAZZA, STELLA & STRADA:

140x200 cm, 170x240 cm, 200x300 cm, 250x350 cm, 300x400 cm, 350x450 cm. Other sizes upon request.

Plain:



Wear classification:  
(EN 1307) Class 33  
Commercial Heavy



Luxury rating:  
(EN 1307) LC 5



Fire classification:  
(EN 13501-1) Bfl-s1

Meets the requirements for Green Label Plus

Pearl, Piazza, Stella, Strada:



Wear classification:  
(EN 1307) Class 32  
Commercial General



Luxury rating:  
(EN 1307) LC 5



Fire classification:  
(EN 13501-1) Bfl-s1

Meets the requirements for Green Label Plus

VELVET RUGS IN DIFFERENT PATTERNS

VELVET PEARL

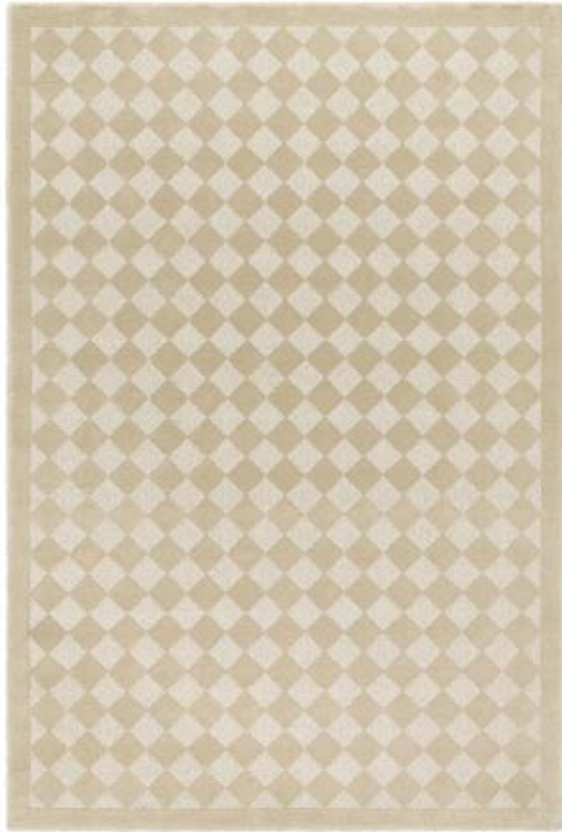
Rug 200x300 cm, Midnight Black 500



*Design Maja Johansson Starander*

VELVET PIAZZA

Rug 200x300 cm, Beige 800



*Design Gunilla Lagerhem Ullberg*

VELVET STELLA

Rug 200x300 cm, Heritage Green 300

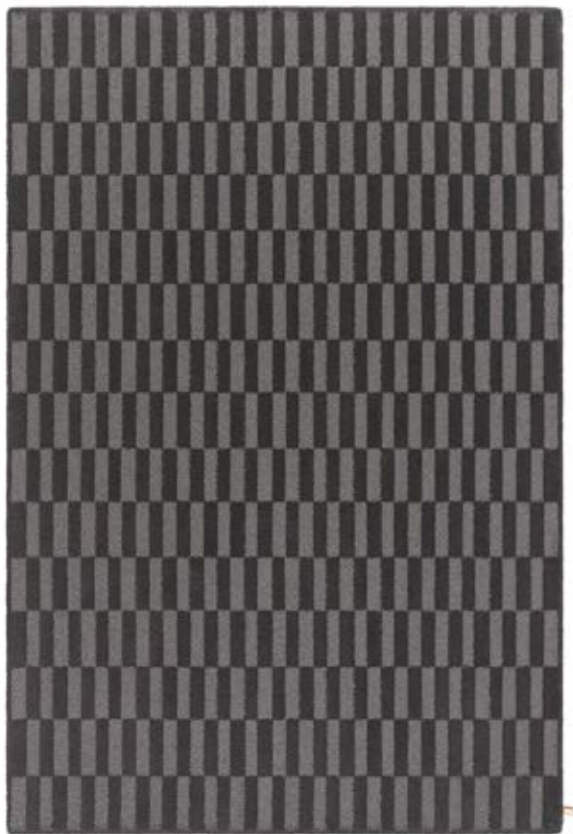


*Design Gunilla Lagerhem Ullberg*



**VELVET STRADA**

Rug 200x300 cm, Marble Grey 501



*Design Gunilla Lagerhem Ullberg*

**VELVET PLAIN**

Rug 200x300 cm, Ruby Red 100



*Design Gunilla Lagerhem Ullberg*



# KASTHALL ARCHIVE

*Kasthall has an archive dating back to the 1950's with samples of most of the collections that have been manufactured since then. The archive also contains original sketches from designers, photographs and documents. The sketches are often real works of art, in watercolor, gouache or collage technique. The archive is a cultural treasure that serves as a continuous source of inspiration. Here is a selection of rugs that are made out of specific sketches or inspired by Kasthall Archive.*





1.



2.



3.



4.



5.

1. POSITIVE & NEGATIVE RUG  
Björn Dahlström 2004  
Hand tufted rug in pure linen.

2. AIRFIELD  
Astrid Sampe 1954  
Hand tufted rug in exclusive,  
high-quality worsted wool and  
effects of linen.

3. VIRVEL  
Ulla Ericsson-Åström 1950's  
Hand tufted rug in pure wool  
and linen.

4. JUNI  
Gunilla Lagerhem Ullberg 2014  
Hand tufted rug in exclusive,  
high-quality worsted wool.

5. DOODLE  
Paola Navone 2012  
Hand tufted rug in pure wool  
and linen.



1.

1. BALDERS HAGE  
Ingrid Dessau 1961  
Hand tufted rug in pure wool  
and linen.

2. PINSTRIPE XL  
Claesson Koivisto Rune 2011  
Hand tufted rug in high-quality wool  
and effects of linen.



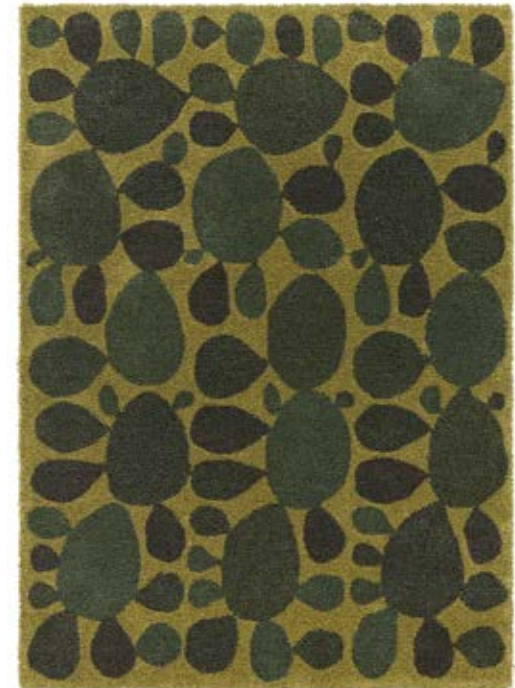
2.



3.

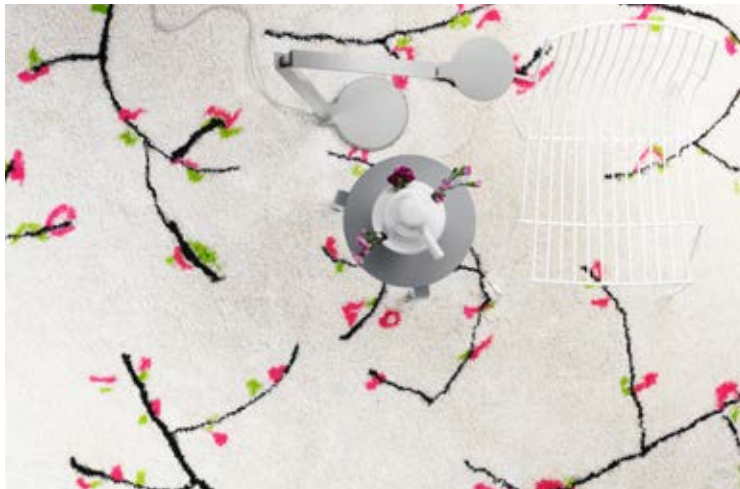
3. DAISY  
Gunilla Lagerhem Ullberg 2009  
Hand tufted rug in pure wool  
and linen.

4. KAKTUS  
Ulla Ericsson-Åström 1950's  
Hand tufted rug in pure wool  
and linen.



4.





1.



2.

1. VÄRTECKEN  
Jonas Bohlin, 1999  
Hand tufted rug in pure linen.

2. KARL  
Jean-Marie Massaud 2010  
Hand tufted rug in pure wool  
and linen.

3. ARGYLE  
Gunilla Lagerhem Ullberg 2011  
Hand tufted rug in pure wool  
and linen.

4. TARTAN  
Gunilla Lagerhem Ullberg 2011  
Hand tufted rug in pure wool  
and linen.



3.



4.

# WALL-TO-WALL

*Kasthall's specialty is the ability to develop floor covering concepts that include all qualities. In our extensive range of wall-to-wall carpets you'll find a flooring solution for all kind of settings, with a distinctive texture, an individual look.*

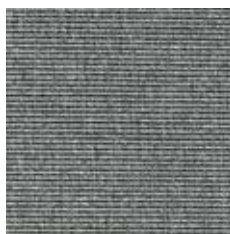
Kasthall's collection of wall-to-wall carpets is unique. Based on the finest raw material combined with our knowledge in technique and qualities, we combine the best carpets for commercial use with exclusive bespoke wool carpets. Each and every carpet is woven for a unique client, to their exact requirements of color, pattern and size. With the full width of the Kasthall range, the textile floor covering options are endless; from the lush handtufted rugs to the uniquely woven all the way to the technical yarns of the flat weave carpets, all with the option to customize.

Kasthall's specialty is the ability to develop floor covering concepts that include all qualities. For example creating a giant patchwork with different tufting structures, intarsia-like installations of flat weave or a graffiti artist work with a pattern repeat of 4x4 meter. In our extensive range you find carpets and runners for all kinds of settings, with a distinctive texture, an individual look and their own expression. Read more about wall-to-wall carpets from Kasthall at [kasthall.com](http://kasthall.com).

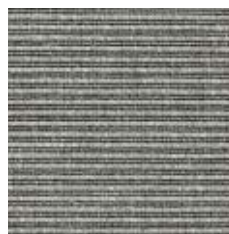




1.



2.



3.



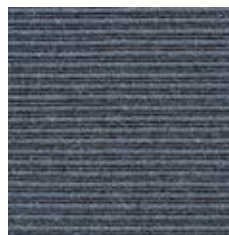
4.



5.



6.



7.



8.

- 1. IRIS  
Silver Blue
- 2. ALFA  
Light Grey
- 3. BETA  
Silver
- 4. ANDREW  
Light Grey
- 5. MARBLE  
Malachite
- 6. GOLF  
Dark Marine
- 7. MACRO MELANGE  
Denim
- 8. LIVIA  
Cold Lava



1.



2.



3.



4.



5.



6.



- 1. MORGAN  
Orange
- 2. LIVIA  
Drift Wood
- 3. MAJA  
Ruby Red
- 4. STRANDVÄGEN  
Red 10
- 5. BOB  
Bright Silver
- 6. IRIS  
Pine Green

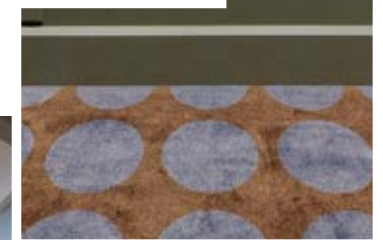
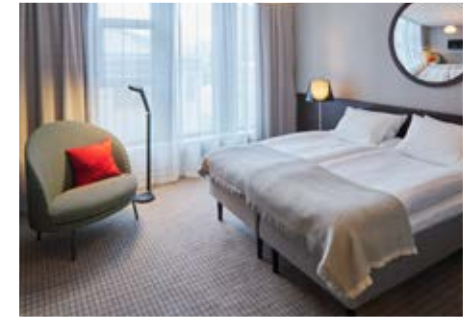
# CASES

PROJECT: Hotel Bergen Børs, located in Bergen, Norway

ARCHITECT: Claesson Koivisto Rune

RUGS: Area Rugs quality: Mark & Wall to Wall carpets with custom made prints, design by CKR in quality: Bespoke AP

Photocredit: Åke E:son Lindman



PROJECT: Nobis Hotel Copenhagen

ARCHITECT: Wingårdhs

RUGS: Hand tufted rugs & Bespoke Printed Carpets

Photocredit: Sören Christensen & Anders Pihl





# GOOD TO KNOW

## CHOOSING A RUG

Choose the characteristics of the rug, its color and design to suit the space in which it will be laid. If it is to be laid in a hall, you may choose a type of rug that is more resistant to wear, and a color that is a little darker and dirt-tolerant. Use a rug as a means of bringing together the rest of the interior. Decide whether you want to place a sofa on the rug or at its edge.

If a rug is to be placed underneath a dining table, add at least 60 cm all round the table to allow space for pulling out the chairs.

Woven rugs are suitable for most settings, both public and private. Ideal for use in domestic settings such as dining rooms, halls and kitchens, and in retail environments, conference premises and corridors. May also be laid as a carpet. Hand tufted rugs are suitable for creating cosy environments with warm acoustics. Depending on the quality, hand tufted rugs can work equally well in domestic settings and public spaces. Ideal for use in living rooms, bedrooms and in lounge environments and hotel rooms.

## OTHER INFORMATION

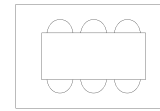
- Depending on the materials used and the rug-making process, dimensions may vary by  $\pm 2\%$  on our hand tufted rugs, and  $\pm 5\%$  on our woven rugs so please state maximum or minimum dimensions when placing your order.

- Note that all rugs from Kasthall are made from natural materials. Variations in color and texture can therefore arise between batches of yarn and dye baths.

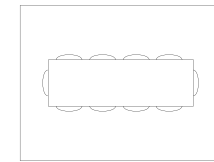
- Woven rugs should be laid on an underlay that prevents them from moving on all types of flooring. This extends the life of the rug and reduces the risk of slipping.

- The use of backing fixes the dimensions of a woven rug and extends its life. This is recommended for woven rugs that are wider than 200 cm and/or those larger than six sqm.

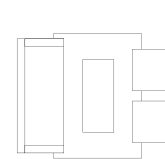
*Examples of commonly used rug sizes:*



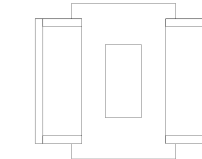
1. Dining table with 6 chairs:  
rug size 200x300 cm



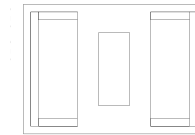
2. Dining table with 10 chairs:  
rug size 300x400 cm



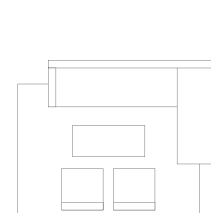
3. Three-seat couch with  
armchairs: rug size 170x240 cm



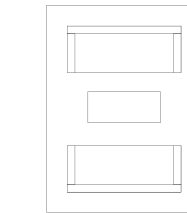
4. Three-seat double couch:  
rug size 200x300 cm



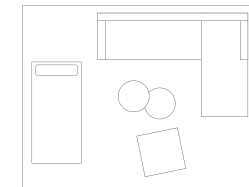
5. Three-seat double couch:  
rug size 250x350 cm



6. Corner sofa with armchairs:  
rug size 250x350 cm



7. Three-seat double couch:  
rug size 300x400 cm



8. Corner sofa with daybed and  
armchair: rug size 350x450 cm

*Kasthall would like to thank the companies below that let us borrow their furniture for our lifestyle photoshoot. t h a n k y o u !*

Atelier Areti  
Blå Station  
David Design  
Dux  
Ekerö Möbler  
Fogia  
Fritz Hansen  
Gubi  
Gulled Agentur  
Hem Design  
Input Interiör  
Ire Möbel  
Länna Möbler  
Massproductions  
Nordiska Galleriet  
Offect  
Poltrona Frau  
Swedese  
Vitra  
Wästberg

Photographer: Mathias Nero  
Stylist: Roberta Ellingsen  
Layout: Fia Miari  
Print: Göteborgstryckeriet, Mölndal, Sweden  
Paper cover: Amber Graphic Laminated, 400g  
Paper insert: Amber Graphic, 150g



KASTHALL SHOWROOMS  
& HEAD QUARTER:

KASTHALL HQ SWEDEN:  
Box 254, Fritslavägen 42  
SE-51123 Kinna  
Phone: +46 (0)320 20 59 00  
info@kasthall.se

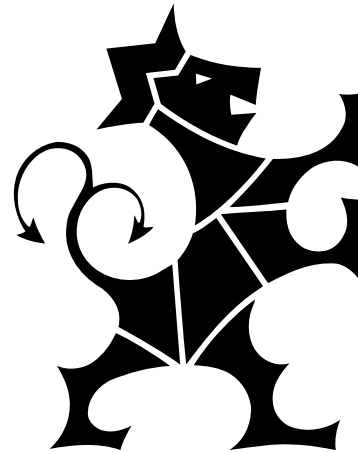
STOCKHOLM FLAGSHIP STORE  
& SHOWROOM:  
Ingmar Bergmans Gata 4  
SE-11434 Stockholm  
Phone: +46 (0)8 662 27 11  
sthlmshop@kasthall.se

GOTHENBURG SHOWROOM:  
Kaserntorget 8  
SE-41118 Gothenburg  
Phone: +46 (0)31 17 10 62  
goteborg@kasthall.se

NEW YORK SHOWROOM:  
New York Design Center  
200 Lexington Avenue, Suite 611  
New York, NY 10016  
Phone: +1 212 421 0220  
info@kasthallusa.com

MILAN SHOWROOM:  
Piazza Paolo VI (Via Delio Tessa)  
IT-20121 Milan  
Phone: +39 02 80 500 338  
info@kasthall.it

FOR THE LATEST UPDATE  
of our collection or to find an agent near you,  
please visit our website, [Kasthall.com](http://Kasthall.com)



[KASTHALL.COM](http://KASTHALL.COM)

